




Multi-trait assessment of wheat variety mixtures performance and stability: Mixtures for the win!

Laura Stefan^{a,1,*} , Silvan Strebel^a, Karl-Heinz Camp^b, Sarah Christinat^c, Dario Fossati^d , Christian Städeli^e, Lilia Levy Häner^a

^a *Cultural Techniques and Varieties in Arable Farming, Agroscope, Nyon, Switzerland*

^b *Delley Seeds and Plants LTD, Delley, Switzerland*

^c *IP-Suisse, Zollikofen, Switzerland*

^d *Field-Crop Breeding and Genetic Resources, Agroscope, Nyon, Switzerland*

^e *Fresh Food and Beverage Group, Volketswil, Switzerland*

ARTICLE INFO

Keywords:

Cultivar mixtures
Grain yield
Grain quality
Yield stability
Wheat

ABSTRACT

In the current quest for a more sustainable, environment-friendly agriculture, variety mixtures are often suggested as a practical option to increase the stability of food production systems. Their effects on yield have been extensively researched, yet clear conclusions remain elusive, notably in terms of mechanistic processes and optimal variety combinations. Furthermore, in the case of wheat, yield is not the only component in the equation: grain quality is crucial for the bread value chain, yet the effects of variety mixtures on wheat quality and its stability have rarely been investigated. To that end, we conducted a multi-year, multi-site wheat variety mixture experiment investigating the role of variety mixtures on the performance and stability of five traits linked to grain yield and quality, and the mechanisms underlying these effects. Eight varieties were grown in pure stands and mixtures of 2 and 8 varieties, following a full diallel design. We considered the responses of grain yield, protein content, thousand kernel weight, hectoliter weight, and Zeleny sedimentation value. Results showed that mixtures generally outperformed pure stands in terms of global performance and stability for the 5 parameters. We particularly noticed an increase in quality stability and in Zeleny sedimentation value in mixtures, showing the potential of mixtures to improve crop quality. Moreover, we highlighted the important role of light interception for increased mixtures benefits. A more detailed investigation into individual mixture performances led us to some practical rules for optimal variety combinations: we advise combining varieties with similar heights and phenologies but different tillering abilities and yield potential. This study thus shows that variety mixtures represent a promising solution to sustainably increase the stability of wheat yield and quality. With practical recommendations, our results could benefit farmers but also processors and bakers, and promote the adoption of wheat variety mixtures.

1. Introduction

Food production systems will face increasingly challenging conditions in the near future (Tilman et al., 2011). Growing human population will require increasing, or at least maintaining crop yields (van Dijk et al., 2021). At the same time, climate change is expected to increase the frequency and magnitude of extreme weather events, such as drought, heat, or heavy rainfall, which can greatly impact agricultural systems (Allan et al., 2021; Jägermeyr et al., 2021). On top of this, there

is an urgent need to reduce the detrimental environmental impacts of crop production systems, through a reduction in synthetic inputs, such as mineral fertilizers, pesticides, and herbicides (Baweja et al., 2020; Thomas et al., 2020). It is thus crucial to design agricultural production systems that are at the same time equally or more performant, more stable, and less reliant on external inputs (Bommarco et al., 2013). Increasing diversity in agricultural systems appears as a potential solution (Gurr et al., 2016; Reckling et al., 2022; Tamburini et al., 2020), but increasing diversity at the species level comes with technical and

* Corresponding author.

E-mail address: laura.stefan@agroscope.admin.ch (L. Stefan).

¹ ORCID 0000-0003-0798-9782

processing challenges that may hinder its adoption (Brooker et al., 2015; Hong et al., 2020; Lithourgidis et al., 2011). Variety mixtures combine the best of the two worlds, since it allows to increase diversity at the genotype level while remaining similar as the standard culture in terms of machinery, technical culture, and equipment (Wuest et al., 2021).

It has been shown in the literature that variety mixtures often lead to benefits in yield production (Fletcher et al., 2019; Tooker and Frank, 2012). While present, these benefits remain small, with an average of 3–4 % yield increase in mixtures compared to pure varieties according to large meta-analyses (Borg et al., 2017; Huang et al., 2024). Increasing productivity is not the only service delivered by variety mixtures: other benefits include decrease in pest and disease pressures (Kristoffersen et al., 2020; Vidal et al., 2020), decrease in weed pressure, potential increase in grain quality (Lazzaro et al., 2018), and potential increase in the stability of grain yield and quality (Döring et al., 2015; L. Li et al., 2023; Stefan et al., 2024). Despite decades of investigation, the mechanisms – and their importance – responsible for these mixture benefits remain unclear, which makes it difficult to choose which varieties to assemble (L. Li et al., 2023). For instance, some studies highlight the importance of varying susceptibilities to pest and diseases (Finckh et al., 2000; Kristoffersen et al., 2021), or the predominant role of asynchrony for stability (Stefan et al., 2024; Wuest et al., 2021), while some effects are thought to arise from complementarity between the varieties, leading to a reduction in competition for resources (Barot et al., 2017; Revilla-Molina et al., 2009). Complementarity generally stems from divergence in traits linked to resource acquisition (Grime, 2006); this is why ecological theory suggests that mixing varieties or species with more different traits will be more beneficial for mixture performance (Zupping-Dingley et al., 2014). In addition, a few recent studies have emphasized the role of complementarity for light acquisition for grain overyielding – that is, increased grain yield in mixtures relative to the corresponding pure stands: Tschurr et al. (2023) demonstrated that grain overyielding in oat variety mixtures was well explained by differences in canopy covers between mixtures and pure stands, suggesting that mixtures show higher potential for efficient light interception. In a study on wheat variety mixtures, Gawinowski et al. (2024) showed the importance of tillering plasticity due to shade avoidance – i.e. the ability of a variety to make more tillers in response to increased shade in mixtures – to explain overyielding. This provides first steps into mechanistic understanding of mixture yield benefits.

In addition to the uncertainties linked to the mechanisms, questions remain open regarding the context-dependence of mixture benefits. Ecological theory and experiments have indeed shown that plant-plant interactions strongly depend on the environmental context and harshness (Bertness and Callaway, 1994; Lortie and Callaway, 2006; Maestre et al., 2009), but the direction and magnitude of these shifts is less clear (Brooker et al., 2021; Maestre et al., 2006). It is often thought that species or variety mixtures are more beneficial in stressful conditions, as we then expect more facilitation and more compensation between the species/varieties (Darch et al., 2018; Steudel et al., 2012). This was notably demonstrated by Su et al. (2023) in the case of maize variety mixtures: in their study, variety mixtures stabilized aboveground biomass production only under stressful conditions (i.e. without irrigation, and with lower soil fertility). They also showed that complementarity effects were positive and facilitation more important at the stressful site, suggesting that increasing variety diversity is better suited under stressful and more fluctuating environmental conditions (Su et al., 2023). Other findings were in contradiction with this pattern (Alsabbagh et al., 2022): in some cases, the highest mixture benefits (such as overyielding) were found in highly productive environments (Chen et al., 2021; C. Li et al., 2020; Stefan, Engbersen, et al., 2021). Higher productivity can indeed lead to more competition between plants, and, therefore, higher benefits of species/variety complementarity – that is, reduced competition – in mixtures (Goldberg and Novoplansky, 1997; Hooper et al., 2005; Stefan et al., 2022). Shedding light on these environmental uncertainties is essential to provide accurate and adapted

advice to farmers for efficient diversification of their crop production.

The bulk of research on variety mixtures has been focusing on the effects of variety diversity on grain crop yield, as it remains the most important parameter for farmers' income (e.g. see (Borg et al., 2017; Döring et al., 2015; Kiær et al., 2009)). However, grain yield alone does not give a complete image of the agronomic performance of a crop. In addition to yield, grain quality needs to be evaluated in order to fully assess crop performance (Levy Häner et al., 2015; Matzen et al., 2019; Reddy et al., 2003). Among quality traits, protein content and composition are essential, as proteins are crucial food components, vital for human and animal health (Fox et al., 1992; Wu, 2016). In the case of cereals, such as wheat, proteins include different types of glens, which directly impact the quality and taste of the final product (e.g. bread) (Schopf et al., 2021; Wieser et al., 2023). Besides protein content, it is common in the wheat processing industry to measure Zeleny sedimentation value, which gives insights into gluten content and quality (Hrušková and Famera, 2003; Levy Häner et al., 2015). Other crop quality traits include kernel weight, often measured as Thousand Kernel Weight (TKW), and specific weight, often measured as Hectoliter Weight (HLW). These parameters are important indicators of the physical quality of grains and are commonly recognized as indicators of potential flour yield by the industry (Marconi et al., 1999; Sirat, 2023). Additionally, the test weight has (together with protein content) a direct influence on the price the farmer receives for his wheat grains (swissgranum, 2023). To the best of our knowledge, very few studies have investigated the effects of variety mixtures on the performance of both crop yield and crop quality parameters (Alsabbagh et al., 2022; Hoang et al., 2021; Lazzaro et al., 2018; Mille et al., 2006), and even fewer have additionally looked at the stability of several quality parameters (Tremmel-Bede et al., 2016).

To fill this knowledge gap, we investigated the performance and stability of wheat variety mixtures in a comprehensive way, by assessing not only crop grain yield, but also several key parameters linked to crop quality. Wheat was chosen in this study as it represents the third major grain crop worldwide in terms of production (FAO, 2022) and accounts for 29.8 % of the arable land in Switzerland, which furthermore possesses a strong wheat breeding program (Federal Statistical Office, 2022). From 2020 to 2023, we set up a large variety mixture field experiment involving 8 Swiss varieties candidates, that were sown either in pure stands, in every possible 2-variety mixture (full diallel design), and in 8-varieties mixtures. The experiment was repeated in 3 sites across Switzerland for 3 growing seasons to evaluate stability of the mixtures. We measured crop grain yield to assess productivity, and grain protein content, TKW, HLW, and Zeleny sedimentation value to assess crop agronomic quality. Our research questions are the following: 1) are wheat variety mixtures better than pure stands in terms of agronomic performance and stability? 2) are performance and stability of mixtures context-dependent? 3) can we find general rules to optimise variety choices for increased performance and stability of mixtures? We expected variety mixtures to outperform pure stands, notably in terms of stability. We further expected that the benefits of mixtures for performance and stability would be higher in more stressful environments, and when mixing varieties with more different traits.

2. Materials and methods

2.1. Experimental sites

The study took place over the course of three growing seasons – 2020/2021, 2021/2022 and 2022/2023 – in three sites across the Swiss Central Plateau. In the following, we will designate each growing season by its harvesting year (i.e. 2020/2021 will be referred to as 2021, 2021/2022 as 2022, and 2022/2023 as 2023). The experimental sites were located in Changins (46°19' N 6°14' E, 455 m a.s.l.), Delley (46°55' N 6°58' E, 494 m a.s.l.) and Utzenstorf (47°97' N 7°33' E, 483 m a.s.l.). The Changins site was located close to lake Geneva, while Delley was located

at the foot of the Jura mountains, and Utzenstorf in the centre of the Swiss Plateau (close to Bern). Climatic conditions and soil properties for the three sites and three seasons are described in Fig. S1-S3 and Table S1. The weather in Changins was slightly warmer than Utzenstorf, the latter being also characterized by higher soil organic matter content and thus, high yield potential.

2.2. Wheat varieties

We used 8 Swiss varieties which covered all quality classes: Molinera, Bodeli and CH 211.14074 with very high quality, Schilthorn, Falotta, Campanile and CH 111.16373 with high quality, and Colmetta with medium quality. All varieties were winter wheat, except for 211.14074 which is issued from the summer wheat breeding program, and Campanile which is a summer wheat but issued from the winter wheat breeding program. We chose varieties from the current Swiss national breeding program that were in use by farmers at the beginning of the project (i.e. 2020) or that were being developed, in order to have direct applicable results. Varieties were chosen based on their morphological and agronomic characteristics to include differences in yield, protein content, foliage shape and awnness, with no more than 15 cm difference in height and no more than 5 days difference in phenological development to ensure synchrony in maturity. More detailed description of the agronomic characteristics of the varieties are provided in Table S2.

2.3. Experimental communities

Experimental communities consisted of single variety plots, 2-varieties mixtures, and one plot with the 8 varieties mixed. We focused on mixtures with 2 varieties as these are the most commonly used in Switzerland. We sowed every possible combination of 2-varieties mixtures, amounting to a total of 28 2-varieties mixtures treatments, to which we added the 8-varieties mixture. Each community was grown in a plot of 7.1 m² (1.5 m*4.7 m). We replicated the experiment three times per site with the exact same variety and mixture composition. We used a complete randomized block design, with plots being randomized at each site within each block. The fields were ploughed with an rotary harrow before being drilled with a small plot drill (Wintersteiger plotseed TC). Density of sowing was 350 viable seeds/m². For the mixtures, seeds were mixed beforehand at a 2 × 50 % ratio for 2-varieties mixtures and 8 × 12.5 % for the 8-variety mixture in proportion to their weight. Plots were sowed mechanically each autumn (see Table S1) and fertilized with ammonium nitrate at a rate of 140 N/ha in 3 applications (40 N/ha at tillering stage/BBCH 22–29; 60 N/ha at the beginning of stem elongation/BBCH 30–31; 40 N/ha at the flag leaf stage/BBCH 45–47). The trials were grown according to the Swiss *Extensio* scheme, i.e. without any fungicide, pesticide, and growth regulator (Finger and El Benni, 2013).

2.4. Data collection

Phenology and height: For each plot, we recorded the heading date as the day of the year, in which 50 % of the ears of the plot had fully emerged from the flag leaf. Plant height was measured in each plot at BBCH 59–75, by taking the average height in centimeters from the ground to the top of five random ears, excluding awns.

Light interception: In Changins (1260), light interception by the canopy was assessed with measurements of Leaf Area Index (LAI) with a ceptometer (Accupar LP-80, METER Group) three times during each growing season. We took the measures once early in the season (between 26th – 30th of April), once in the mid-season (17th – 26th of May), and once at the end of the season before senescence (2nd – 5th of June). In each plot, three measurements were taken in the late morning by placing the sensor on the soil surface in between rows (avoiding the rows at the plot borders). Light measurements beneath the canopy were compared

to ambient radiation through simultaneous PAR measurements of a calibration sensor, which was placed on a vertical post at 1.5 m above ground.

Traits measurements: At flowering time, we randomly sampled 6 healthy leaves per plot. We immediately wrapped this leaf in moist cotton; this was stored overnight at room temperature in open plastic bags. The following day, we removed excess surface water on the leaf and weighted it to obtain its water saturated weight (Cornelissen et al., 2003). This leaf was then scanned with a flatbed scanner (Perfection V39II, Epson), oven-dried in a paper envelope at 80°C for 72 hours, and subsequently weighed again to obtain its dry weight. Leaf Dry Matter Content (LDMC) was calculated as the ratio of leaf dry mass (g) to water saturated leaf mass (g). Using the leaf scans, we measured leaf area with the image processing software ImageJ (Schneider et al., 2012). Specific Leaf Area (SLA) was calculated as the ratio of leaf area (cm²) to leaf dry mass (g).

Ear density: Before harvest, we manually harvested horizontal bands of 1.5 × 0.3 square meters per plot. The location of the band was randomly chosen but we avoided plot edges (i.e. the band was located at more than 0.5 m from the lower and upper edge of each plot). We counted the heads, and obtained ear density from the head counts.

Plot yield: At maturity, we harvested each plot with a combine harvester (Zürn 150, Schontal-Westernhausen, Switzerland). The harvested grains were dried when needed, weighed a first time, then sorted and cleaned by air and with a sieve cleaner, and subsequently weighted again. We measured hectoliter weight (test weight, HLW, kg/hl) and water content at the plot level using a Dickey-John machine (GAC 2100). Grain yield was subsequently standardized to 15 % of humidity. Protein content (% of dry matter) was measured at the site level with a near-infrared instrument (ProxiMate™, Büchi instruments). Thousand kernel weight (TKW, g) was measured at the plot level with a Marvin seed analyzer (GTA Sensorik, Neubrandenburg, Germany).

2.5. Data analyses

Performance: Agronomic performance of the treatments was assessed with 5 response variables, namely grain yield (dt/ha), protein content (% of dry matter), Thousand Kernel Weight (TKW, g), Hectoliter Weight (HLW, kg/hl), and Zeleny sedimentation value (mL). The general matrix of correlation for our 5 variables is shown in Table S3. For each of these variables and also for Leaf Area Index (LAI) and ear density, we calculated the corresponding overperformance in mixtures as the difference between observed and expected value of the mixtures, where expected value is the sum of the values in pure stands weighted by the relative abundance of each component (Loreau and Hector, 2001):

$$\text{Overperformance of mixture (A,B)} = \text{performance of mixture(A,B)} - [r_A \times \text{performance of mono(A)} + r_B \times \text{performance of mono(B)}]$$

where r_i indicates the relative abundance of the variety i in the mixture. The relative abundances were calculated based on the relative plant densities at sowing and the germination rates in pure lines. This calculation was also performed for early and late Leaf Area Index (in Changins only).

The effects of the experimental treatments on performance and overperformance were investigated using linear mixed-effects models. Fixed factors included year, site, number of varieties (2 vs 8) nested into monoculture vs. mixtures, as well as the interactions between them. Replication per environment as well as variety composition were set as random factors, for instance:

$$\text{yield} \sim \text{year} \times \text{site} \times (\text{mono vs. mix} + \text{number of varieties}) + (1 | \text{rep}) + (1 | \text{variety composition})$$

$$\text{overyield} \sim \text{year} \times \text{site} \times \text{number of varieties} + (1 | \text{rep}) + (1 | \text{variety composition}) \text{ (at the plot level, i.e. 3 replicates per site} \times \text{year)}$$

To check whether overperformance values were significantly different from 0, we used *t*-tests.

Stability: We quantified the stability of each response variable using WAASB, which is the Weighted Average of Absolute Scores from the decomposition of the matrix of BLUPs for genotype \times environment interaction effects, developed by Olivoto (2019). For each genotype, WAASB is computed by summing its scores in all of the Interaction Principal Component Axis, weighed by the amount of variability explained by the axis. This index was chosen as BLUP has been shown to be the most predictively accurate model, and the WAASB index presents several advantages and increased robustness compared to AMMI-based stability indexes (Olivoto et al., 2019).

The effects of year/site and number of varieties on stability were investigated with a similar linear mixed-effects models, with year or site (depending on temporal vs. spatial stability) interacted with number of varieties (2 or 8) nested into monoculture vs. mixture as fixed factors, and variety composition as random factors, e.g.

yield temporal stability \sim site \times (mono vs. mix + number of varieties) + (1|variety composition)

For overall stability, we simply used a linear model with mono vs. mix and number of varieties as factors.

Multi traits performance and stability: Multitrait performance and stability was assessed using the Multi Trait Stability Index developed by Olivoto (2019). The index was computed using the five response variables described above, with equal weights for each: grain yield, protein content, TKW, HLW, and Zeleny sedimentation value. Performance and stability were given equal weights in the index calculation. The genotype/mixture with the lowest MTSI is the closest to the ideotype and presents a high performance and stability for all analysed variables (Olivoto, et al., 2019).

Monoculture characteristics: for each 2-variety mixture, we calculated the absolute and relative difference in yield, protein content, height, heading date, density, Leaf Area Index (in Changins only), SLA (in Changins only) and LDMC (in Changins only) between the two components when grown in pure stands as:

Absolute difference in parameter for the mixture (A,B)
 $= |\text{monoculture value of A} - \text{monoculture value of B}|$

Relative difference in parameter for the mixture (A,B)
 $= \frac{|\text{monoculture value of A} - \text{monoculture value of B}|}{\text{monoculture value of A} + \text{monoculture value of B}}$

These indices allow to quantify how different the varieties in the mixtures were (Stefan et al., 2024). The indices were computed per site and year, and subsequently averaged across sites and/or years when needed. The absolute difference was used in models investigating absolute response variables (such as overyielding, for instance), while the relative difference was used in the stability models, as the relative difference allows to compare between environments more easily.

To investigate relationships between overperformance and explanatory parameters, we used linear mixed-effects models with absolute differences in yield, protein content, height, heading date, density, LAI, FPAR, SLA and LDMC (in Changins only), as well as awns difference (yes when one variety has awns, the other not; no when both varieties have awns or both do not) as fixed factors, and site within year, variety composition as random factor, e.g.

overyield \sim diff.yield + diff.prot + diff.height + diff.day + diff.dens + awns difference + (1|variety composition) + (1|year/postcode)

We used this model as we were interested to see what characteristics were linked to overperformance across years and sites, i.e. that were not environment-dependent. This model was run for 2-varieties mixtures only.

For stability responses, we used the same type of model but averaged the relative differences to the scale of stability investigated (spatial, temporal, overall).

Homogeneity of variance and normality of residues for linear mixed models were assessed visually and with Shapiro–Wilk tests (Royston, 1982). Effect sizes were calculated from marginal means obtained using the function *emmeans*, and post-hoc pairwise comparisons were computed using Tukey test from the *emmeans* function (Lenth, 2021). Effect sizes are indicated in brackets in the text.

3. Results

3.1. Performance and overperformance

In a first step, we looked at how the response variables were affected by environmental and experimental factors (i.e. year, site, and diversity treatment). Grain yield was significantly affected by year*site, and year*site*number of varieties (Table S4, Fig. S4-S6). Post-hoc comparisons showed however that there was no significant difference in yield due to the number of varieties present in the mixtures (i.e. 2 vs. 8 varieties) within any year*site. Protein content was only affected by year and site, just as TKW and HLW (Table S4). Zeleny sedimentation value significantly responded to site and monoculture vs. mixtures: across all varieties and combinations, Zeleny sedimentation value increased in mixtures compared to monocultures (from 51.5 to 52.4 mL, F-value = 5.19, p-value = 0.023, Table S4, Fig. S7).

The same models were applied to overperformances (i.e. the difference between observed value in the mixture and the expected value based on the corresponding pure stands) and showed that for all parameters, overperformance values were affected by year and site, but not by number of varieties (Table S5, Fig. S8, Fig. S9). Overyield and overperformance in protein content were affected by year*site, while overperformance in TKW only by year and overperformance in HLW only by site. Overperformance in Zeleny was greatly impacted by year and site, with lowest values in 2021 (-0.5 mL in 2021 vs. 2.7 mL in 2022) and highest in Utzenstorf (3.15 mL). In addition, overperformance in Zeleny had a significant site*number of varieties factor, but posthoc comparisons did not show any effects of number of varieties within site.

When looking at the average overperformance deviation from 0 (Table 1), we found that overperformance in protein content was significantly negative across all sites and years (-0.11 % in average, Table 1), while for Zeleny it was significantly positive (+1.08 mL in average, Table 1). Overperformance in Zeleny was particularly positive in Delley and Utzenstorf, as well as in 2022 and 2023 (Table 1), but negative in Changins 2021 (Table S6). Overperformance in protein content was significantly negative in Delley and in 2021; the only significant positive value was observed in 2022 in Changins (Table S6). Results for yield, TKW and HLW were more contrasted, with notable positive overyield in Changins and in 2021, but negative in Delley 2022 and Utzenstorf 2022. Overperformance in TKW was globally negative in 2021 and positive in 2022, while for HLW it was positive in Delley 2022 and Utzenstorf 2022 but negative in Changins 2022 and Utzenstorf 2023. Overperformance in early LAI did not significantly respond, but for late LAI overperformance was significantly positive in 2021, 2023, and in the global average. Overperformance in ear density was significantly positive in Changins and negative in the other two sites.

In a second step, we looked at relationships between overperformances and possible explanatory variables, namely differences in monoculture characteristics and differences in awns. Results are detailed in Table S7, S8 and S9, summarized in Table 2, and show that a few general patterns emerge.

First, monoculture difference in height had a significant effect on overyield and overperformance in HLW (Table S7). This effect was negative for both overyield (estimate = -0.26, Fig. 1) and HLW (-0.07), indicating that mixture benefits for yield and HLW were higher when the two varieties mixed did not have a large difference in height when

Table 1

Results of the *t*-test to evaluate whether overperformance is significantly different from 0. Numbers indicate the average absolute values per site (Changins, Delley, Utzenstorf) and per harvest year (2021, 2022, 2023). Bold numbers indicate environments where the *t*-test was significant. Green numbers indicate a positive effect of mixtures on the parameter, while orange numbers indicate a negative effect of mixtures on the parameter.

Overperformance in:	Changins	Delley	Utzenstorf	2021	2022	2023	Average
Yield	1.7	-0.9	-0.5	0.59	-0.34	-0.01	0.08
Protein content	0.023	-0.3	-0.06	-0.17	-0.07	-0.1	-0.11
Thousand Kernel Weight	0.07	0.07	-0.056	-0.29	0.22	0.16	0.029
Hectoliter Weight	-0.55	0.016	0.095	0.078	-0.066	-0.44	-0.14
Zeleny	-0.15	1.5	1.86	0.035	2.18	1.03	1.08
Early Leaf Area Index	0	NA	NA	0.03	0.14	-0.07	0
Late Leaf Area Index	0.3	NA	NA	0.55	0.035	0.14	0.3
Ear density	21.7	-12.9	-11	-11.1	7.9	0.55	0.75

Table 2

Effects of explanatory variables on overperformance parameters. Filled boxes indicate a significant positive (+) or negative (-) effect based on the linear mixed-effects model.

	Overyield	Overperformance in protein content	Overperformance in Thousand Kernel Weight	Overperformance in Hectoliter Weight	Overperformance in Zeleny
Awns difference					
Diff in mono yield		+			+
Diff in mono protein		-			
Diff in mono height	-			-	
Diff in mono heading day			-		-
Diff in mono density		+			
Diff in mono LAI early					
Diff in mono LAI late					
Overperformance in early LAI		+			+
Overperformance in late LAI	+		-		
Diff in mono SLA					
Diff in mono LDMC		-			

grown in monoculture.

Secondly, monoculture difference in heading day significantly affected overperformance in TKW (-0.07) and in Zeleny (-0.19) (Table S7). In the two cases, the relationship was negative, indicating that benefits were higher when mixing varieties with similar phenologies and heading dates.

Thirdly, monoculture difference in yield had a positive effect on overperformance in protein content (0.015) and in Zeleny (0.1) (Table S7), suggesting that mixture benefits for protein content and

Zeleny sedimentation value were higher when mixing varieties with greater differences in monoculture yield.

The remaining effects were less clear and varied across response variables; for instance, difference in protein content between the mixed varieties had a significant negative impact on overperformance in protein content (-0.11), indicating that a lower difference in protein content between the two varieties correlated with increased protein benefits. We also observed a positive relationship between overperformance in protein content and monoculture difference in ear density (0.002),

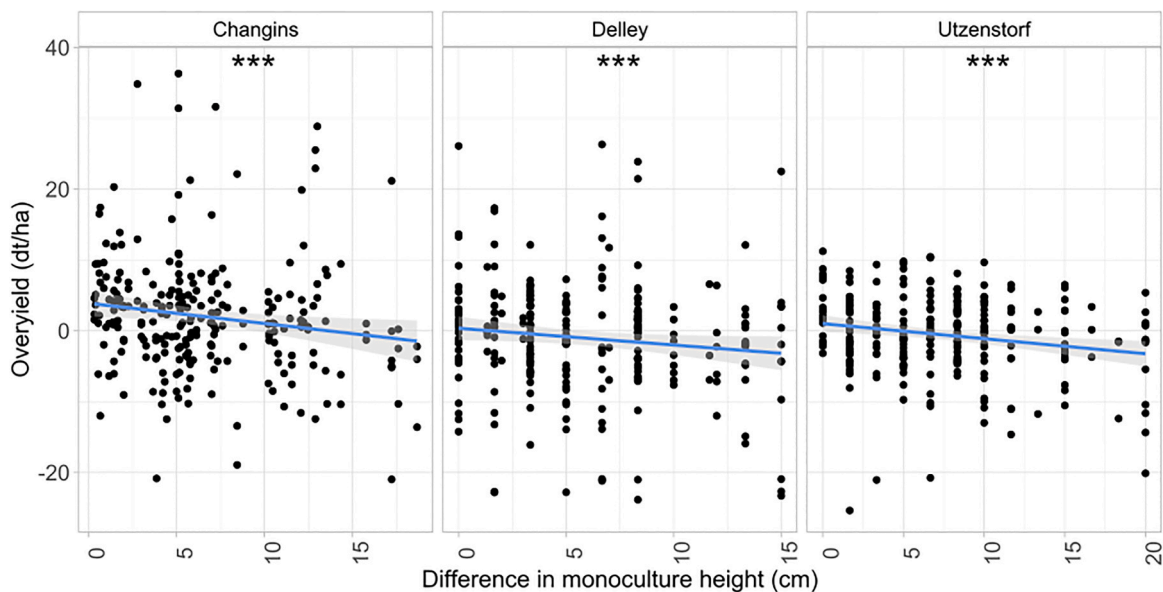


Fig. 1. Grain overyield (dt/ha) of the mixtures in relationship to the mean difference in height of the corresponding varieties when grown in monocultures (cm), in Changins, Delley, and Utzenstorf. $n = 754$. The lines represent linear regression fittings, with the grey area representing the 0.95 confidence interval. Stars represent significant relationships at p -value < 0.05 .

indicating a larger mixture benefit for protein content when mixing varieties with larger differences in ear density when grown as pure stand. Mixing varieties with different awning characteristics did not affect any of the overperformance response variables.

The additional measures taken in Changins allowed to gain more insights into the role of light for all the response variables except HLW (Table S8). Specifically, the response variables showed strong relationships with overperformance in either early or late LAI; notably overperformance in protein (0.46) and Zeleny (1.15) positively correlated with overperformance in early LAI, while overyield (1.9) positively correlated with overperformance in late LAI (Fig. 2). This indicates that overperformance was generally higher in mixtures where the LAI was larger than the relative sum of the corresponding LAIs in pure stands. There was one exception to this general result for TKW, with overperformance in TKW negatively correlating with overperformance in late LAI (-0.36). Finally, difference in LDMC negatively affected overperformance in protein content (-9.3), suggesting increased mixture

benefits when combining varieties with similar LDMC.

To summarise, Table 2 allows to show that overperformance in protein content was the most responsive to our explanatory variables, followed by Zeleny. Overperformances in yield and TKW were less affected by our explanatory variables, while HLW only responded to one criterium.

3.2. Temporal stability

Stability per site was assessed with the score WAASB for each parameter, calculated per site across the 3 study years. It thus represents temporal stability. A lower WAASB score indicates more stability.

Yield stability score was not affected by site or diversity treatment (Table S10). Protein stability score (WAASB protein) was significantly affected by site and monoculture vs. mixture: WAASB protein was lowest in Delley, followed by Utzenstorf (+62.5 %) and Changins (+62.5 %, Fig. S10), and significantly lower in mixtures compared to monocultures

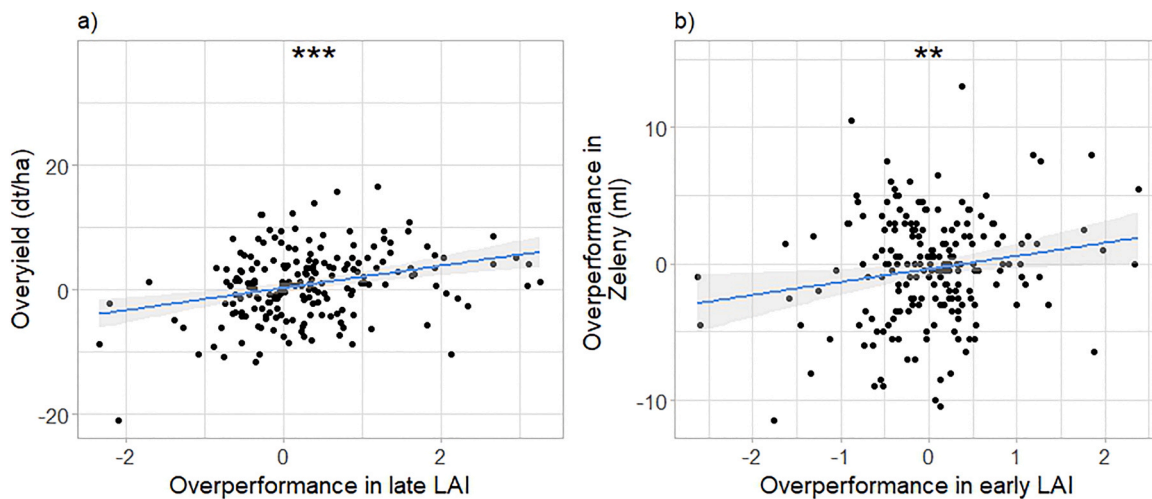


Fig. 2. Grain overyield (dt/ha) (a) and overperformance in Zeleny sedimentation value (ml) (b) of the mixtures in relationship to overperformance in LAI (Leaf Area Index) in Changins. $n = 246$. The lines represent linear regression fittings, with the grey area representing the 0.95 confidence interval. Stars represent significant relationships at p -value < 0.05 .

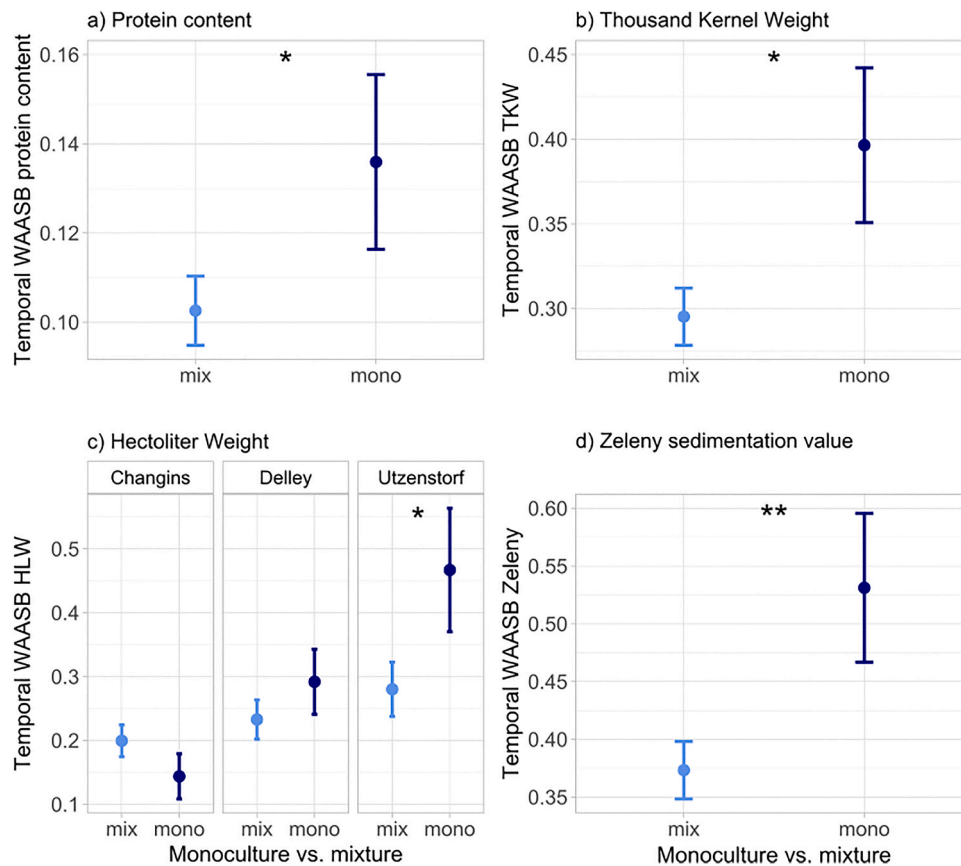


Fig. 3. Temporal Stability scores for protein content (a), TKW (b), HLW (c), and Zeleny (d) in response to monoculture vs. mixture, and to site for HLW. $n = 111$. *Mono* refers to the average score of the 8 varieties in pure stands, across all sites and years. *Mix* refers to the average score of the 28 2-variety mixtures and the 8-variety mixtures, across all sites and years. Lower WAASB scores indicate higher stability. Dots represent the mean values across plots; lines represent the standard error. Stars placed above or next to the results represent the significance of monoculture vs. mixture.

(-14 %, Fig. 3a). For TKW as well, we found a significant increase in stability (i.e. a decrease in WAASB TKW) in mixtures compared to monocultures: the stability score went from 0.322 in monocultures to 0.209 in mixtures (-35 %) (Fig. 3b). WAASB TKW was also significantly lower in Changins compared to Delley (-30 %, Fig. S10).

Temporal stability for HLW was affected by site interacted with monoculture vs. mixture: specifically, we found that in Utzenstorf, WAASB HLW was 57 % lower in mixtures compared to monocultures (Fig. 3c). Zeleny stability responded to site and monoculture vs. mixture: the stability score was significantly higher in Utzenstorf compared to Changins (-27 %) and Delley (-35 %, Fig. S10). It was also significantly lower in mixtures compared to monocultures (Fig. 3d), with a reduction of 21 %, indicating an increase in temporal stability of Zeleny in mixtures.

When investigating into explanatory mechanisms, we did not find many significant effects (Table S11): there was only an effect of awns difference on WAASB protein, with a lower stability score (i.e. increased stability) when the two varieties combined had similar awn characteristics (-30 % in comparison to mixtures with one variety awned and the other not). There was no effect of any additional light variables measured in Changins (Table S12).

3.3. Spatial stability

Stability per year was assessed with the score WAASB for each parameter, calculated per year across the 3 study sites. It thus represents spatial stability. As before, a lower WAASB score indicates more stability.

Stability in yield was affected by year interacted with monoculture

vs. mixture (Table S13): posthoc comparisons however did not show any effect of diversity within year. Stability in protein content was higher in 2021 than 2023 and 2022: WAASB protein was 87 % lower in 2021 compared to 2022, and 81 % lower in 2021 compared to 2023 (Fig. S11). Regarding thousand kernel weight, WAASB TKW was significantly lower in mixtures compared to monocultures (-41 %, Fig. 4a), showing an increase in spatial stability of TKW in mixtures. Stability in HLW and Zeleny were both only affected by year: WAASB HLW was higher in 2023 than 2022 and 2021 (+16 %), while WAASB Zeleny was significantly higher in 2022 compared to 2023 (+42 %, Fig. S9). There was no effect of any of the explanatory variables on spatial stability (Table S14).

3.4. Global stability

Global stability was assessed with the score WAASB for each parameter, calculated across the 9 environments of the study (i.e. across sites and years). It thus represents overall stability. As before, a lower WAASB score indicates more stability.

In the case of thousand kernel weight and Zeleny sedimentation value, we found a reduction in WAASB score in mixtures compared to monocultures (-42 % for WAASB TKW and -13 % for WAASB Zeleny, Fig. 4b and c, Table S15), indicating an increase in stability for TKW and Zeleny in mixtures.

When looking at explanatory variables, we found that WAASB TKW and WAASB HLW were positively affected by difference in monoculture height (3.5 and 2.8, Fig. 5a and b, Table S16), indicating that mixtures were more stable for TKW and HLW when combining varieties with similar heights in monocultures. WAASB yield was negatively affected

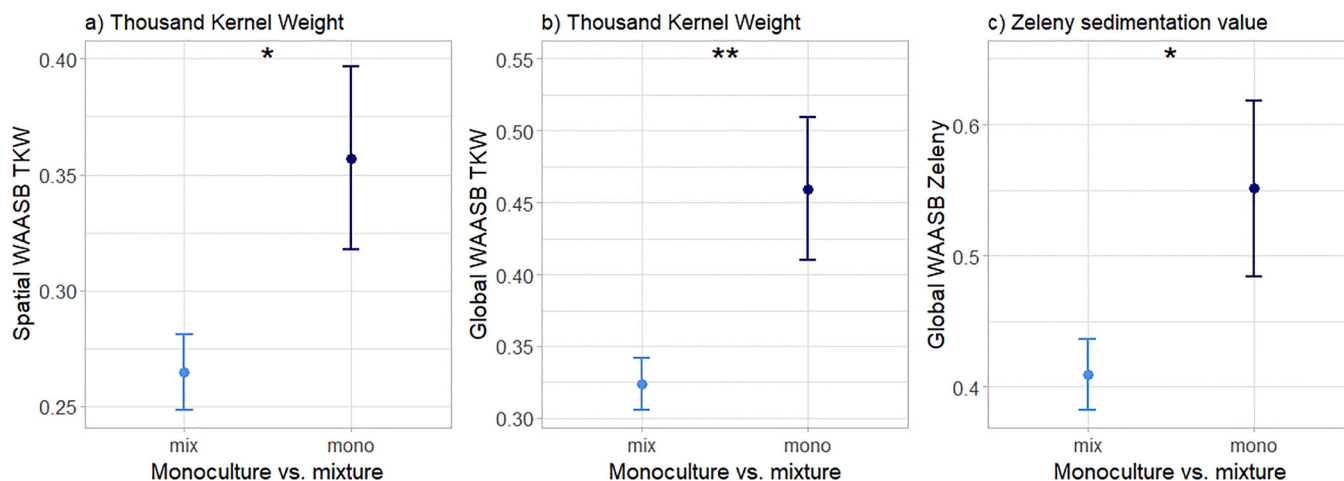


Fig. 4. Spatial Stability score for TKW (a), Global Stability score for TKW (b) and Zeleny (c) in response to monoculture vs. mixture. $n = 111$ (a), $n = 37$ (b,c). *Mono* refers to the average score of the 8 varieties in pure stands, across all sites and years. *Mix* refers to the average score of the 28 2-variety mixtures and the 8-variety mixtures, across all sites and years. Lower WAASB scores indicate higher stability. Dots represent the mean values across plots; lines represent the standard error. Stars placed above or next to the results represent the significance of monoculture vs. mixture.

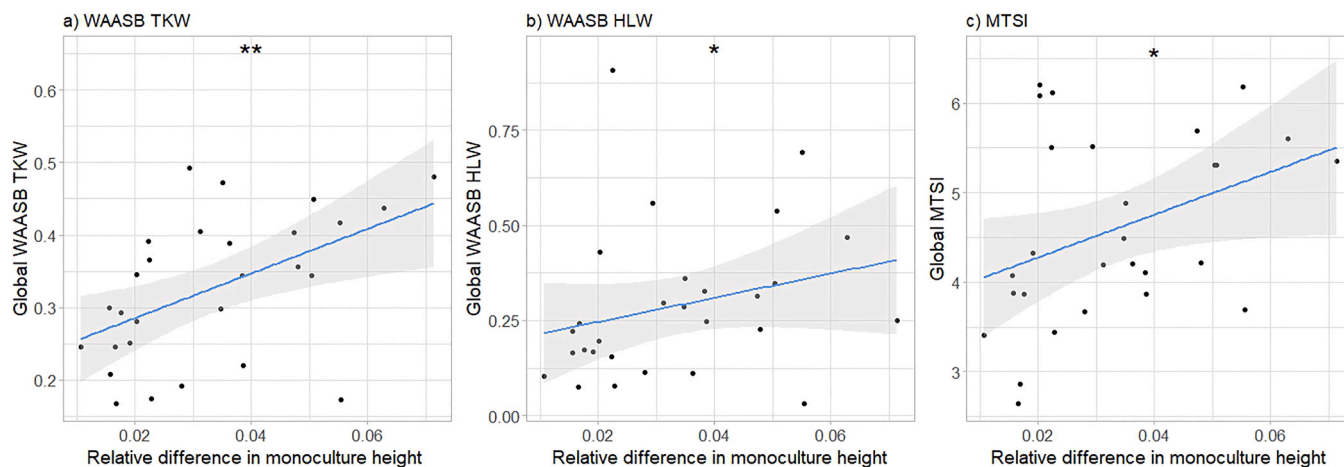


Fig. 5. Global Stability scores for TKW (a) and HLW (b), as well as Global Multitrait Stability Index (c) of the mixtures in relationship to difference in monoculture height. $n = 28$. Lower WAASB scores indicate higher stability. The lines represent linear regression fittings, with the grey area representing the 0.95 confidence interval. Stars represent significant relationships at p -value < 0.05 .

by difference in monoculture protein content (-1.8) (Table S16).

3.5. Multitrait performance and stability

MTSI is a combined measured of multitrait performance and stability. Lower MTSI indicates closer proximity to the ideal genotype, and thus, higher performance and stability.

Temporal MTSI (i.e. MTSI per site, calculated across years) was significantly affected by site and monoculture vs. mixture (Table S10). Notably, temporal MTSI was lower in Changins compared to Delley and Utzenstorf (-24 %, Fig. S12) and lower in mixtures compared to monocultures (-11 %, Fig. 6). This indicates that across years, mixtures were performing better and were more stable than monocultures. There was no effect of the explanatory variables (Table S11, S12).

Spatial MTSI (i.e. MTSI per year, calculated across sites) was affected by year and year interacted with number of varieties (Table S13): MTSI was lower in 2023 than 2021 (-25 %) and 2022 (-17 %, Fig. S12). There was no significant effect of number of varieties within any year, nor any effect of the explanatory variables (Table S14).

Global MTSI (calculated across sites and years) was positively affected by difference in monoculture yield (2.1, Fig. 5c) and difference

in monoculture height (4.7, Fig. 5c) (Table S16), indicating that overall performance and stability was higher in mixtures combining varieties with similar heights and yields when growing in monocultures. All mixtures and monocultures were ranked according to their global MTSI score; this result can be visualized in Fig. 7.

4. Discussion

In this study, we used a multitrait approach to investigate the effects of variety mixtures on performance and stability of several parameters reflecting crop quantity and quality in wheat production systems. We expected higher performance and stability of these parameters in mixtures compared to monocultures. We found evidence in this direction for Zeleny values and the stability of several parameters; in addition, when combining the stability and performance of all parameters, we showed that mixtures outperformed monocultures. In a subsequent step, we investigated links between performance and stability of these parameters and traits of the mixture components. While many relationships depended on environmental context, we did find that in general, the best mixtures among our samples were those combining varieties with similar heights and phenologies, but different yields when grown in pure

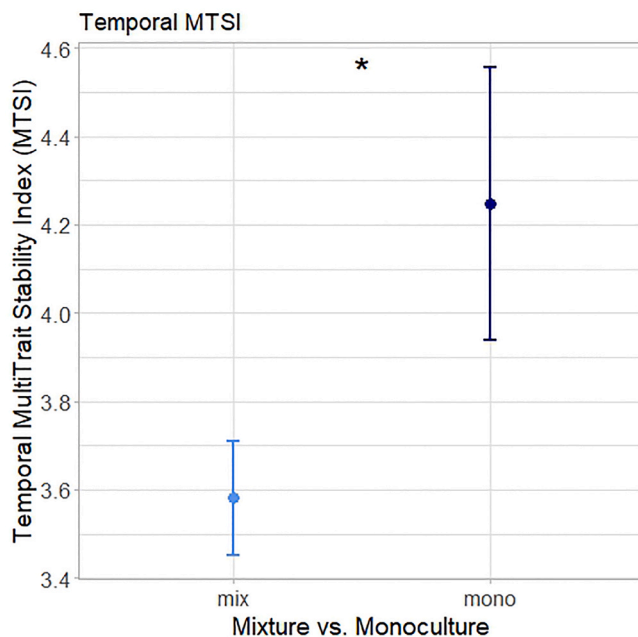


Fig. 6. Temporal Multitrait Stability Index in response to monoculture vs. mixture. $n = 111$. *Mono* refers to the average score of the 8 varieties in pure stands, across all sites and years. *Mix* refers to the average score of the 28 2-variety mixtures and the 8-variety mixtures, across all sites and years. Lower MTSI scores indicate higher stability and performance. Dots represent the mean values across plots; lines represent the standard error. Stars placed above or next to the results represent the significance of monoculture vs. mixture.

stands. In addition, mixture performance was higher when the combined varieties were able to intercept more light than in monocultures.

4.1. Mixtures generally outperform monocultures

In order to have a comprehensive view of both crop quantity (i.e. yield) and crop agronomic quality, we considered five crop parameters in this study, namely grain yield, grain protein content, Thousand Kernel Weight (TKW), Hectoliter Weight (HLW), and Zeleny sedimentation value. These were chosen because they are important to farmers and wheat processors, and are part of standard evaluations by processors, industry, and the whole wheat value chain (Kleijer, 2002; Sauer et al., 1991; swissgranum, 2023). When considering all the response parameters, our study showed that mixtures outperformed monocultures in terms of overall performance and stability. Notably, the temporal multitrait stability index – which combines all parameters and evaluates both performance and stability – was lower in mixtures than in monocultures (Fig. 6), indicating that at each site, mixtures performed better and/or were more stable across years than monocultures. Spatial MTSI and global MTSI also showed similar trends, but these were not significant (see Fig. S13), probably due to small sample sizes for global MTSI ($n = 37$). We could nonetheless rank all mixtures and monocultures according to their global MTSI scores and provide several options for promising mixtures to farmers (Fig. 7). This multitrait result is consistent with Lazzaro et al. (2018), who showed that overall crop performance of mixtures was higher than individual varieties when considering several agroecosystem services together. Similarly, Hoang et al. (2021) demonstrated that mixtures have the potential to improve overall crop performance (including grain quality). This result is all the more staggering considering that our study was a full diallel design, meaning that all the 2-variety combinations were considered: we did not specifically focus on chosen, smartly designed mixtures. This indicates that even when mixing varieties randomly, chances are that the mixtures could bring benefits. Nonetheless, further analyses are needed to decipher the

role of specific varieties and specific pairwise interactions in mixtures. For instance, Fig. 7 shows us that the best-ranked varieties often lead to good-performing mixtures (e.g. Falotta & 211.14074, Campanile & 211.14074), but associating one poor-ranked variety can also work (e.g. Falotta & Molinera), while mixing average varieties can lead to both good (Schilthorn & Campanile) and poor (Schilthorn & 211.14074) mixtures. It thus seems that specific pairwise interactions are complex and require more in-depth analyses.

In our study, lower MTSIs in mixtures were largely driven by lower WAASB scores of several response parameters: this was notably the case for the stability scores of protein content, TKW, and Zeleny (Fig. 3, Fig. 4), highlighting the benefits of variety mixtures for increased stability in these parameters. Similar results were found for instance by Tremmel-Bede et al. (2016), who showed that variety mixtures and composite cross populations have a stabilizing effect on wheat quality parameters, or Döring et al. (2015) who demonstrated that mixtures had more stable protein yields than pure lines.

In addition to benefits for stability, our study also showed that mixtures outperformed monocultures for Zeleny sedimentation value. This was the case for absolute values, i.e. mixtures had a higher Zeleny value than monocultures across sites and years (Fig. S7), but also for relative terms, i.e. overperformance in Zeleny was significantly positive overall (Table 1). This means that in mixtures, the Zeleny value was generally higher than the relative sum of the corresponding monoculture values. This finding is rather new, as very few studies have looked at Zeleny sedimentation values in mixtures vs. monocultures, and in the few that did, no difference in Zeleny was found (Hoang et al., 2021; Osman, 2006). Zeleny is an important characteristic for bread baking and is standardly used, among other parameters, by breeders and processors to select high baking quality lines (Escarnot et al., 2018) and predict final behaviour during the baking process (Hildermann et al., 2009). Higher Zeleny values are generally associated with both higher gluten content and a better gluten quality, which strongly influences final bread volume and quality (Hrušková and Faměra, 2003). Therefore, higher Zeleny values in mixtures could potentially lead to increased baking quality, which could be of interest for wheat breeders, processors, bakers, and consumers.

4.2. But no one-size-fits-all solution: the success of mixtures is dependent on the assessed parameters

While mixtures outperformed monocultures when combining all the assessed parameters, this was not always the case when looking at each parameter individually. For instance, in our experiment, overperformance in Zeleny was positive; overperformance in yield, TKW and HLW was not significantly positive nor negative, while for protein content it was even negative across all environments. This study therefore emphasizes the importance of considering several response parameters to properly assess mixture performance.

While contrary to our initial hypotheses, the absence of positive overyielding is still consistent with the literature, where several studies found that yield advantages often vary according to the mixtures or the environmental conditions (Alsabbagh et al., 2022; Li et al., 2023; Mengistu et al., 2010). Li et al. (2023) did for instance show that increasing the number of varieties does not always promote productivity, which is in line with our results of yield (Table S4 and S5). Alsabbagh et al. (2022) and Hoang et al. (2021) even found that increasing genetic diversity had a generally negative effect on yield, while Mengistu et al. (2010) only found small yield advantages in mixtures that were rarely significant. Importantly, while we did not find significant yield benefits, we also did not find yield losses in mixtures, which suggests that mixtures do not penalize farmers in terms of grain yield (Creissen et al., 2016).

Mixtures had an overall negative effect on protein content, which was unexpected: in Hoang et al. (2021) for instance, variety mixtures improved protein content. This negative result for protein content is all

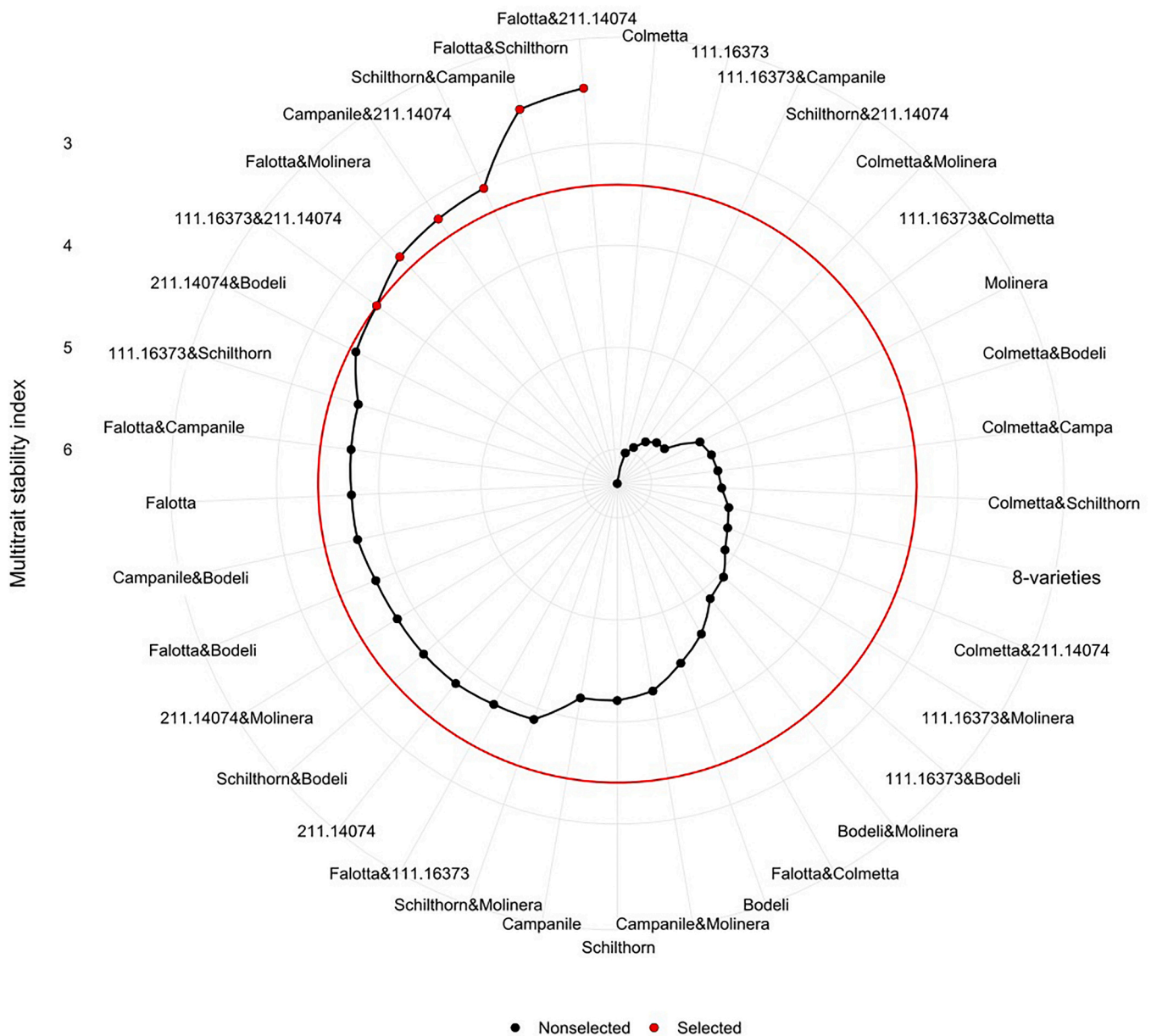


Fig. 7. MTSI ranking of all mixtures and monocultures. Lower MTSI scores indicate higher stability and performance. The red line represents the 15 % selection intensity (i.e. red dots represent the 15 % best genotypes/mixtures).

the more surprising when considering that mixtures had an overall positive effect on Zeleny, and that these two parameters are often positively correlated (Pasha et al., 2007). A positive effect on Zeleny combined with a negative effect on protein content thus shows that the benefits for Zeleny are independent from protein content, and suggest a true increase in protein quality in wheat mixtures. This finding is rather new; further research should be conducted to confirm this result, and baking tests should be performed to check whether this increase in quality holds true up until the actual bread baking.

Stability results were more consistent when looking at each parameter individually, with increased stability in mixtures for protein, TKW, HLW, and Zeleny. Among the few studies looking at stability of crop quality in mixtures, there were similar findings: Tremmel-Bede et al. (2016) observed positive effects on the stability of quality traits in mixtures, while diversity was beneficial for grain weight in Alsabbagh et al. (2022). Surprisingly, we did not find significant mixture benefits for yield stability in our study, which was contrary to our expectations based on previous literature from both ecological and agronomical fields

(Huang et al., 2024; Kaut et al., 2009; Mengistu et al., 2010; St. Luce et al., 2020; Tremmel-Bede et al., 2016). This suggests that it is not just diversity *per se* that matters, but also mixture composition and environmental conditions (Schöb et al., 2015; Tilman et al., 1997): if there is no abiotic or biotic stressors, or if the variety responses to these stressors are not different enough, then the potential compensatory effects in the mixtures might not take place (Stefan et al., 2024).

4.3. Explaining performance and stability of mixtures from variety traits

One of our main hypotheses was that mixing varieties that are more different – in terms of agronomical traits (yield, protein content, density) but also morphological (height, awns), phenological (heading date) or functional (LAI, SLA, LDMC) traits – would lead to mixtures with increased benefits. This was not necessarily true in our study: we observed as many positive effects of variety differences on over-performance than negative effects (see Table 2). When looking into more details, we had rather contrasted results depending on the variety trait

investigated or the response parameter of interest. This shows once again that there is no simple, universal solution for increased performance of all parameters in diverse crop communities (Brooker et al., 2015). Nevertheless, a few important points emerged among our results. First, this study underlined the importance of height as a key variety trait, with lower differences in height between varieties correlating with better overall mixture performance and stability (MSTI, Fig. 5c), increased benefits for yield and HLW (Table 2), as well as for stability of TKW and HLW (Fig. 5a and b). Mixing varieties that had similar heights when grown in monocultures thus led to higher benefits. This result is confirming previous research such as Gawinowski et al. (2024), in which the mixtures with varieties more different in height also underyielded. Height is a trait for which plants generally demonstrate adaptive similarity: in response to competition for light and to avoid shade, all individuals tend to converge to the same height in a crop field (Dahlin et al., 2020; Schmutz and Schöb, 2024; Stefan et al., 2022). Smaller varieties thus need to compensate and generally over-invest in vegetative organs at the expense of reproductive ones, thereby reducing their yield potential (Anten and Vermeulen, 2016; Wille et al., 2017).

The observed significant role of height points us towards the crucial role of light interception for improved crop performance (Gawinowski et al., 2024). The importance of light was confirmed by the predominant role of LAI in our mixtures (Tables 1 and 2): overperformance in late LAI was significantly positive in mixtures, indicating that mixtures intercepted more light than what was expected based on their respective components in pure stands. This is consistent with many studies looking at diverse agricultural systems, notably with Huang et al. (2024), who found that cultivar mixtures generally increased leaf area index in various crop systems. Engbersen (2022b, 2022a) and Board (1992) also observed greater light interception in species mixtures, and identified this as a driving mechanism of yield benefits. As expected, in our case, increased overperformance in LAI correlated with increased benefits for yield in variety mixtures (Table 2). This was also the case in Engbersen (2022a) for species mixtures, and in Hu et al. (2019) for maize, where mixed cropping optimized canopy structure and promoted higher grain yield. Interestingly, overperformance in LAI in mixtures did not only positively correlate with overyield, but also with increased benefits for Zeleny and for protein. This shows that higher light interception does not only promote higher grain yield, but also improves grain quality. This statement is further supported by our results of ear density, which showed that mixing varieties with more different densities was more beneficial for protein (Table 2). Ear density is closely related to tillering ability and therefore also reflects the potential of varieties to modulate their light interception in response to light availability and other environmental constraints (Gawinowski et al., 2024; Maddonni et al., 2001; Weiner et al., 2010). For instance, plasticity in ear numbers and tillering was found as the main contributor to variation in mixture yields in the study of Gawinowski. In our study, we could unfortunately not assess trait plasticity or monitor tillering and ear numbers of each individual variety within the mixtures, as it was impossible to distinguish every component from each other.

Secondly, our study emphasized the importance of closer phenologies for increased performance of the mixtures. This was unexpected, as it has been largely suggested in the literature that some benefits of variety mixtures stem from phenological buffering, i.e. mixtures buffer the risk of flowering “too early or too late” (Fletcher et al., 2019). While large differences in phenology are not desirable for technical and harvest considerations, smaller phenological differences can in theory be beneficial to minimize risks of extreme weather events happening at a critical development stage (e.g. heat or frost event during flowering) (Haghshenas et al., 2021; Tschurr et al., 2023). We did not find any support for this theory in our case; this might be because there was no particular stress during critical development stages, because the mechanisms of phenological buffering are more complicated than what current theory suggests, or because our varieties did not have enough phenological differences. Similar findings were reported by Haghshenas

et al. (2021) in a situation of post-anthesis water stress: under stressful conditions, they even reported lower heterogeneity in the ripening pattern of mixtures.

Finally, we found improved quality in terms of protein and Zeleny when mixing varieties with larger differences in yield. Thus, mixing a high-yielding variety with a low-yielding variety can increase quality benefits. One explanation to this is that high-yielding varieties tend to have lower quality than low-yielding varieties – due to trade-offs in resource allocation and breeding histories (Anderson et al., 1998; Michel et al., 2019; Simmonds, 1995) – and combining the two can therefore mask the lower quality of the high-yielding variety and boost overall quality (Zhou et al., 2014).

We only assessed aboveground traits in this study, which are substantially linked to light interception, and this can be why we mostly observed a significant role of light interception mechanisms. Some of our traits did not show a lot of initial variability (such as height or phenology), which was deliberate for practical considerations (i.e. synchrony in harvest time) and due to the source materials (i.e. most current Swiss varieties fall within the same height range). Including more diversity of traits as well as more varieties would be interesting to further strengthen our results (Vidal et al., 2020). Indeed, here we mostly focused on mixtures of 2 varieties, as these are the most common in Switzerland; however, mixtures with 3 or more varieties might be even more beneficial for stability and performance (Lazzaro et al., 2018; Tilman and Downing, 1994). Furthermore, belowground processes, such as root complementarity (Freschet et al., 2021; Stomph et al., 2020), plant-microbiome interactions (Duchene et al., 2017; Stefan, Hartmann, et al., 2021), or plant-soil feedbacks (Eroğlu et al., 2024) can also play a role in driving complementarity and productivity. In addition, belowground processes can provide better insights into competition for plant nutrients or water (Engbersen et al., 2021; Foxx and Fort, 2019; Manoli et al., 2017; Song et al., 2009), which can then influence crop growth, grain yield and grain quality. In our experiment, we could not well explain variations in overperformance for TKW and HLW, and maybe this is due to the importance of water availability – which we did not measure – for grain filling (Royo et al., 2007; Torrion and Stougaard, 2017). Finally, the bulk of our measures were done only once per season and do not account for temporal variation in growth or resource partitioning. Only LAI was measured several times in the season, and results show that there were indeed changes between the early and the late measures: for instance, in the early season, overperformance in LAI correlated with overperformance in protein content, while in the late season, it correlated with overyielding. This shows that different plant processes happen at different timeframes of the growing season (Trinder et al., 2012; Zhang et al., 2017); the moment of peak growth rate might not be the same as peak grain filling, and some resources might be more important during vegetative growth while others might matter more during grain formation (Ashraf and Bashir, 2003). This temporal differentiation of processes and resource use might thus be crucial to explain overperformance (Engbersen et al., 2021; Zhang et al., 2015).

4.4. Effects on environmental conditions on mixtures stability and performances

The results described above are valid across environments in our study; they represent the general effects and links that we could find among the great variability partly due to natural heterogeneity inherent to field trials, but mostly due to changing environmental conditions. Indeed, performance and stability of our wheat communities were generally strongly dependent on environmental conditions, i.e. year and site. This was expected based on previous literature (e.g. see (Döring et al., 2015; Su et al., 2023; Weih et al., 2021)). Notably, we expected increased performances and stability of mixtures in more stressful environments, following the stress-gradient hypothesis (Bertness and Callaway, 1994; Lortie and Callaway, 2006). When looking at all the response parameters together, we observed lower MTSI scores in

Changins and in 2023, indicating a better overall performance and stability in these environments. Overyielding was also positive in Changins only (Fig. S8), while TKW and HLW were more stable there (Fig. S10). Environmental conditions were slightly harsher in Changins compared to the two other sites: the soils in Changins were characterized by higher than optimal pH for wheat cultivation (pH > 7) (Mahler and McDole, 1987; Vitosh, 1998), while precipitations during early season were more elevated (Fig. S1). On the contrary, in Utzenstorf, the most productive environment (Fig. S4, highest yielding site), none of the response parameters were very stable. These results may hint us towards higher yield benefits and stability in lower productive conditions.

2023 was marked by very hard conditions regarding drought and heat stress (Fig. S1-S3) and was the lowest yielding year (Fig. S4). Yield and Zeleny were particularly more stable in 2023 (Fig. S11), but this was not the case for all parameters: protein for instance was more stable in 2021. Moreover, regarding overperformance, nothing was positive in 2023 except for Zeleny (Table 1). There was no significant overyielding in 2023, even though this was the most stressful year in terms of productivity; this illustrates the complexity of environmental effects. Similar results were previously reported, with Alsabbagh finding little support for the stress gradient hypothesis (Alsabbagh et al., 2022), or Döring who observed that yield benefits were inconsistent across years and sites (Döring et al., 2015).

Furthermore, while 2023 was marked by intense drought and heat stress, 2022 was equally affected (Fig. S1-S3), and 2021 on the contrary was struck by heavy rainfall throughout the spring/summer and hail events during grain formation and ripening. This highlights the fact that every year or environment brings its own kind of stressors, which can also cumulate – increasingly so with global warming and the expected rise in the frequency of intense weather events (Allan et al., 2021) – making it difficult to properly disentangle the effects of one stressor (Herrera et al., 2020). For instance, in our study it is impossible to properly assess the effects of intense heat, since our “cooler” year of comparison was affected by extreme rainfall. To properly disentangle the effects of weather, we would either need more experiments across more environmental conditions to cover a larger gradient of stressors, or it would require to experimentally manipulate the stressors, through rainout shelters or irrigation for instance (Jiang et al., 2020; Wright et al., 2021; Yahdjian and Sala, 2002). In addition, measuring the microclimates in plant communities would also provide valuable further insights into mechanistic processes taking place in diverse systems, such as local increase in moisture or cooler temperatures below the canopy (Aguirre et al., 2021; Kemppinen et al., 2024). Direct measurements of plant stress levels (e.g. stomatal conductance) would additionally enable to precisely identify stress level and duration (Wang et al., 2015).

5. Conclusions

This study showed that mixtures generally outperformed monocultures in terms of global performance and stability for 5 crop parameters reflecting grain yield and quality. Notably, for most parameters we observed an increased in stability in mixtures. We also found a positive effect of mixtures on Zeleny sedimentation value, showing the potential of variety mixtures to improve crop quality despite a tendency towards lower grain protein content. Furthermore, our study allowed to emphasize the role of competition for light for mixture benefits, notably the role of height and leaf area index. A higher light interception indeed led to increased overperformance in yield and in quality. Despite variability across environmental conditions, wheat varieties mixtures are thus generally worth it. However, the varying performances of the different mixtures underline the importance of a thorough assessment of the characteristics of the individual components that are used to design the mixtures. As a practical recommendation, we advise to combine varieties that have similar heights and phenologies but different tillering abilities and yield potentials, and highlight the importance to monitor light interception. We also provide a list of promising mixtures readily

available for farmers. All in all, we show that variety mixtures represent a promising solution to maintain and increase wheat yield, quality, and stability; this study could be of interest to farmers, processors, and bakers and help promote the larger adoption of wheat variety mixtures.

Funding sources

This project was jointly funded by the Swiss Federal Office for Agriculture (BLW) and IP-Suisse.

CRediT authorship contribution statement

Lilia Levy Häner: Writing – review & editing, Supervision, Resources, Investigation, Funding acquisition, Conceptualization. **Laura Stefan:** Writing – review & editing, Writing – original draft, Visualization, Project administration, Investigation, Formal analysis, Data curation. **Silvan Strebel:** Writing – review & editing, Investigation. **Sarah Christinat:** Writing – review & editing, Funding acquisition, Conceptualization. **Karl-Heinz Camp:** Writing – review & editing, Resources, Investigation, Funding acquisition, Conceptualization. **Christian Städeli:** Writing – review & editing, Funding acquisition, Conceptualization. **Dario Fossati:** Writing – review & editing, Resources, Funding acquisition, Conceptualization.

Declaration of Competing Interest

The authors declare the following financial interests/personal relationships which may be considered as potential competing interests: financial support was in part provided by IP-Suisse and the Swiss Federal Office for Agriculture (BLW). However, the funding partners played no role in the data analyses, generation of the results, and interpretation of the findings.

Acknowledgments

We thank Yann Imhoff, Noémie Schaad, Julie Roux, Reynold Bovy, Flavio Fojada and Malgorzata Watroba for their assistance with field experiments, and Patrick Krähenbühl for help with the sedimentation analyses. We also acknowledge the support from Michael Winzeler and Hans Winzeler regarding the choice of the accessions, and the interpretation of the results. This project was jointly funded by the Swiss Federal Office for Agriculture (BLW) and IP-Suisse.

Appendix A. Supporting information

Supplementary data associated with this article can be found in the online version at doi:10.1016/j.eja.2024.127504.

Data availability

Data is freely available on Zenodo: <https://doi.org/10.5281/zenodo.12805935>

References

- Aguirre, B.A., Hsieh, B., Watson, S.J., Wright, A.J., Beatriz Aguirre, C.A., 2021. The experimental manipulation of atmospheric drought: teasing out the role of microclimate in biodiversity experiments. *J. Ecol.* 109, 1986–1999. <https://doi.org/10.1111/1365-2745.13595>.
- Allan, R.P., Hawkins, E., Bellouin, N., Collins, B., 2021. IPCC, 2021: Summ. Policy. <https://doi.org/10.1017/9781009157896.001>.
- Alsabbagh, P., Gay, L., Colombo, M., Montazeaud, G., Ardisson, M., Rocher, A., Allard, V., David, J.L., 2022. Diversity matters in wheat mixtures: a genomic survey of the impact of genetic diversity on the performance of 12 way durum wheat mixtures grown in two contrasted and controlled environments. *PLOS ONE* 17 (12), e0276223. <https://doi.org/10.1371/journal.pone.0276223>.
- Anderson, W.K., Shackley, B.J., Sawkins, D., 1998. Grain yield and quality: does there have to be a trade-off? *Euphytica* 100 (1–3), 183–188. <https://doi.org/10.1023/A:101832600609/METRICS>.

- Anten, N.P.R., Vermeulen, P.J., 2016. Tragedies and crops: Understanding natural selection to improve cropping systems. In: *Trends in Ecology and Evolution*, 31. Elsevier Ltd, pp. 429–439. <https://doi.org/10.1016/j.tree.2016.02.010>.
- Ashraf, M., Bashir, A., 2003. Relationship of photosynthetic capacity at the vegetative stage and during grain development with grain yield of two hexaploid wheat (*Triticum aestivum* L.) cultivars differing in yield. *Eur. J. Agron.* 19 (2), 277–287. [https://doi.org/10.1016/S1161-0301\(02\)00073-4](https://doi.org/10.1016/S1161-0301(02)00073-4).
- Barot, S., Allard, V., Cantarel, A., Enjalbert, J., Gauffreteau, A., Goldringer, I., Lata, J.C., Le Roux, X., Niboyet, A., Porcher, E., 2017. Designing mixtures of varieties for multifunctional agriculture with the help of ecology. A review. *Agron. Sustain. Dev.* 37 (2). <https://doi.org/10.1007/s13593-017-0418-x>.
- Baweja, P., Kumar, S., & Kumar, G. (2020). Fertilizers and Pesticides: Their Impact on Soil Health and Environment. 265–285. https://doi.org/10.1007/978-3-030-44364-1_15.
- Bertness, M.D., Callaway, R., 1994. Positive interactions in communities. *Trends Ecol. Evol.* 9 (5), 191–193. (<http://www.sciencedirect.com/science/article/pii/0169534794900884>).
- Board, J.E., Kamal, M., Harville, B.G., 1992. Temporal Importance of Greater Light Interception to Increased Yield in Narrow-Row Soybean. *Agron. J.* 84 (4), 575–579. <https://doi.org/10.2134/agronj1992.00021962008400040006x>.
- Bommarco, R., Kleijn, D., Potts, S.G., 2013. Ecological intensification: harnessing ecosystem services for food security. *Trends Ecol. Evol.* 28 (4), 230–238. <https://doi.org/10.1016/j.tree.2012.10.012>.
- Borg, J., Kiær, L.P., Lecarpentier, C., Goldringer, I., Gauffreteau, A., Saint-Jean, S., Barot, S., & Enjalbert, J. (2017). Unfolding the potential of wheat cultivar mixtures: A meta-analysis perspective and identification of knowledge gaps. *Field Crops Research*. (<http://www.sciencedirect.com/science/article/pii/S0378429017309498>).
- Brooker, R.W., Bennett, A.E., Cong, W.-F., Daniell, T.J., George, T.S., Hallett, P.D., Hawes, C., Iannetta, P.P., Jones, H.G., Karley, A.J., 2015. Improving intercropping: a synthesis of research in agronomy, plant physiology and ecology. *N. Phytol.* 206 (1), 107–117. (<http://onlinelibrary.wiley.com/doi/10.1111/nph.13132/full>).
- Brooker, R.W., George, T.S., Homulle, Z., Karley, A.J., Newton, A.C., Pakeman, R.J., Schöb, C., 2021. Facilitation and Biodiversity Ecosystem Function (BEF) relationships in crop production systems and their role in sustainable farming. *J. Ecol.* <https://doi.org/10.1111/1365-2745.13592>.
- Chen, J., Engbersen, N., Stefan, L., Schmid, B., Sun, H., Schöb, C., 2021. Diversity increases yield but reduces harvest index in crop mixtures. *Nat. Plants* 2021, 1–6. <https://doi.org/10.1038/s41477-021-00948-4>.
- Cornelissen, J.H.C., Lavorel, B.S., Garnier, B.E., Díaz, C.S., Buchmann, N., Gurvich, D.E., Reich, P.B., F. S., Morgan, H.D., Van Der Heijden, M.G.A., Pausas, J.G., Poorter, H., 2003. A handbook of protocols for standardised and easy measurement of plant functional traits worldwide. *Aust. J. Bot.* 51, 335–380. <https://doi.org/10.1071/BT02124>.
- Creissen, H.E., Jørgensen, T.H., Brown, J.K.M., 2016. Increased yield stability of field-grown winter barley (*Hordeum vulgare* L.) varietal mixtures through ecological processes. *Crop Prot.* 85, 1–8. <https://doi.org/10.1016/J.CROPRO.2016.03.001>.
- Dahlin, I., Kiær, L.P., Bergkvist, G., Weih, M., Ninkovic, V., 2020. Plasticity of barley in response to plant neighbors in cultivar mixtures. *Plant Soil* 447 (1–2), 537–551. <https://doi.org/10.1007/s11104-019-04406-1>.
- Darch, T., Giles, C.D., Blackwell, M.S.A., George, T.S., Brown, L.K., Menezes-Blackburn, D., Shand, C.A., Stutter, M.I., Lumsdon, D.G., Mezeli, M.M., Wendler, R., Zhang, H., Wearing, C., Cooper, P., Haygarth, P.M., 2018. Inter- and intra-species intercropping of barley cultivars and legume species, as affected by soil phosphorus availability. *Plant Soil* 427 (1–2), 125–138. <https://doi.org/10.1007/s11104-017-3365-z>.
- van Dijk, M., Morley, T., Rau, M.L., Saghai, Y., 2021. A meta-analysis of projected global food demand and population at risk of hunger for the period 2010–2050. *Nat. Food* 2021 (7), 494–501. <https://doi.org/10.1038/s43016-021-00322-9>.
- Döring, T.F., Annicchiarico, P., Clarke, S., Haigh, Z., Jones, H.E., Pearce, H., Snape, J., Zhan, J., Wolfe, M.S., 2015. Comparative analysis of performance and stability among composite cross populations, variety mixtures and pure lines of winter wheat in organic and conventional cropping systems. *Field Crops Res.* 183, 235–245. <https://doi.org/10.1016/J.FCR.2015.08.009>.
- Duchene, O., Vian, J.-F., Celette, F., 2017. Intercropping with legume for agroecological cropping systems: Complementarity and facilitation processes and the importance of soil microorganisms. A review. *Agric., Ecosyst. Environ.* 240, 148–161. (<http://www.sciencedirect.com/science/article/pii/S0167880917300828>).
- Engbersen, N., Brooker, R.W., Stefan, L., Studer, B., Schöb, C., 2021. Temporal differentiation of resource capture and biomass accumulation as a driver of yield increase in intercropping. *Front. Plant Sci.* 12, 926. <https://doi.org/10.3389/FPLS.2021.668803>.
- Engbersen, N., Stefan, L., Brooker, R.W., Schöb, C., 2022b. Using plant traits to understand the contribution of biodiversity effects to annual crop community productivity. *Ecol. Appl.* 32 (1). <https://doi.org/10.1002/EAP.2479>.
- Engbersen, N., Stefan, L., Brooker, R.W., Schöb, C., 2022a. Temporal dynamics of biodiversity effects and light-use-related traits in two intercropping systems. *J. Sustain. Agric. Environ.* 1 (1), 54–65. <https://doi.org/10.1002/sae2.12010>.
- Eroğlu, Ç. G., Bennett, A.A., Steininger-Mairinger, T., Hann, S., Puschenreiter, M., Wirth, J., Gfeller, A., 2024. Neighbour-induced changes in root exudation patterns of buckwheat results in altered root architecture of redroot pigweed. *Sci. Rep.* 2024 14: 1 14 (1), 1–17. <https://doi.org/10.1038/s41598-024-58687-3>.
- Escarnot, E., Gofflot, S., Sinnavee, G., Dubois, B., Bertin, P., & Mingeot, D. (2018). Reactivity of gluten proteins from spelt and bread wheat accessions towards A1 and G12 antibodies in the framework of celiac disease. <https://doi.org/10.1016/j.foodchem.2018.06.094>.
- FAO. (2022). Agricultural production statistics 2000–2020. FAOSTAT Analytical Brief Series, 41.
- Federal Statistical Office. (2022). Surface agricole utile sans les alpages - 1985-2022. (<https://www.bfs.admin.ch/bfs/en/home/statistics/catalogues-databases/tables.assetdetail.23985525.html>).
- Finckh, M.R., Gacek, E.S., Goyeau, H., Lannou, C., Merz, U., Mundt, C.C., Munk, L., Nadziak, J., Newton, A.C., De Vallaville-Pope, C., Wolfe, M.S., 2000. Cereal variety and species mixtures in practice, with emphasis on disease resistance. *Agronomie* 20 (7), 813–837. <https://doi.org/10.1051/AGRO:2000177>.
- Finger, R., El Benni, N., 2013. Farmers' adoption of extensive wheat production – Determinants and implications. *Land Use Policy* 30 (1), 206–213. <https://doi.org/10.1016/j.landusepol.2012.03.014>.
- Fletcher, A., Ogden, G., Sharma, D., 2019. Mixing it up – wheat cultivar mixtures can increase yield and buffer the risk of flowering too early or too late. *Eur. J. Agron.* 103, 90–97. <https://doi.org/10.1016/J.EJA.2018.12.001>.
- Fox, D.G., Sniffen, C.J., O'Connor, J.D., Russell, J.B., Van Soest, P.J., 1992. A net carbohydrate and protein system for evaluating cattle diets: III. Cattle requirements and diet adequacy. *J. Anim. Sci.* 70 (11), 3578–3596. <https://doi.org/10.2527/1992.70113578x>.
- Foxx, A.J., Fort, F., 2019. Root and shoot competition lead to contrasting competitive outcomes under water stress: a systematic review and meta-analysis. *PLOS ONE* 14 (12), e0220674. <https://doi.org/10.1371/JOURNAL.PONE.0220674>.
- Freschet, G.T., Roumet, C., Comas, L.H., Weemstra, M., Bengough, A.G., Rewald, B., Bardgett, R.D., De Deyn, G.B., Johnson, D., Klimešová, J., Lukac, M., McCormack, M. L., Meier, I.C., Pagès, L., Poorter, H., Prieto, I., Wurzbürger, N., Zadworny, M., Bagniewska-Zadworna, A., Stokes, A., 2021. Root traits as drivers of plant and ecosystem functioning: current understanding, pitfalls and future research needs. *N. Phytol.* <https://doi.org/10.1111/1365-2745.13592>.
- Gawinowski, M., Enjalbert, J., Cournède, P.-H., Flutre, T., 2024. Contrasted reaction norms of wheat yield in pure vs mixed stands explained by tillering plasticity and shade avoidance. *Field Crops Res.* 310, 109368. <https://doi.org/10.1016/J.FCR.2024.109368>.
- Goldberg, D., Novoplansky, A., 1997. On the relative importance of competition in unproductive environments. *Source.: J. Ecol.* 85 (4). (<https://www.jstor.org/stable/2960565>).
- Grime, J.P., 2006. Trait convergence and trait divergence in herbaceous plant communities: mechanisms and consequences. *J. Veg. Sci.* 17 (2), 255–260 [http://www.bioone.org/doi/abs/10.1658/1100-9233\(2006\)17%5B255:TCATD%5D2.0.CO;2](http://www.bioone.org/doi/abs/10.1658/1100-9233(2006)17%5B255:TCATD%5D2.0.CO;2).
- Gurr, G.M., Lu, Z., Zheng, X., Xu, H., Zhu, P., Chen, G., Yao, X., Cheng, J., Zhu, Z., Catindig, J.L., 2016. Multi-country evidence that crop diversification promotes ecological intensification of agriculture. *Nat. Plants* 2, 16014. (https://www.nature.com/articles/nplants201614?WT.feed_name=subjects_ecosystem-services).
- Haghshenas, A., Emam, Y., Sepaskhah, A.R., Edalat, M., 2021. Can extended phenology in wheat cultivar mixtures mitigate post-anthesis water stress? *Eur. J. Agron.* 122, 126188. <https://doi.org/10.1016/J.EJA.2020.126188>.
- Herrera, J.M., Häner, L.L., Mascher, F., Hiltbrunner, J., Fossati, D., Brabant, C., Charles, R., Pellet, D., Beres, B.L., Bonnett, G., Romulo, A., & Lollato, P. (2020). Lessons From 20 Years of Studies of Wheat Genotypes in Multiple Environments and Under Contrasting Production Systems. <https://doi.org/10.3389/fpls.2019.01745>.
- Hildermann, I., Thommen, A., Dubois, D., Boller, T., Wiemken, A., Mäder, P., 2009. Yield and baking quality of winter wheat cultivars in different farming systems of the DOK long-term trial. *J. Sci. Food Agric.* 89 (14), 2477–2491. <https://doi.org/10.1002/jsfa.3750>.
- Hoang, T.N., Kopecky, M., Konvalina, P., 2021. Winter wheat mixtures influence grain rheological and mixolab quality. *J. Appl. Life Sci. Environ.* 54 (4), 417–428. <https://doi.org/10.46909/journalase-2021-036>.
- Hong, Y., Heerink, N., van der Werf, W., 2020. Farm size and smallholders' use of intercropping in Northwest China. *Land Use Policy* 99, 105004. <https://doi.org/10.1016/j.landusepol.2020.105004>.
- Hooper, D.U., Chapin, F.S., Ewel, J.J., Hector, A., Inchausti, P., Lavorel, S., Lawton, J.H., Lodge, D.M., Loreau, M., Naeem, S., 2005. Effects of biodiversity on ecosystem functioning: a consensus of current knowledge. *Ecol. Monogr.* 75 (1), 3–35. (<http://onlinelibrary.wiley.com/doi/10.1890/04-0922/full>).
- Hrušková, M., Faměra, O., 2003. Prediction of wheat and flour zeleny sedimentation value using NIR technique. *Czech J. Food Sci.* 21 (3), 91–96.
- Hu, D., Li, R., Zhang, J., Zhao, B., Liu, P., Dong, S., 2019. Mixed cropping of different hybrids of maize optimizes canopy structure and promotes higher grain yield. *Agron. J.* 111 (6), 2692–2702. <https://doi.org/10.2134/agronj2019.01.0047>.
- Huang, T., Döring, T.F., Zhao, X., Weiner, J., Dang, P., Zhang, M., Zhang, M., Siddique, K. H.M., Schmid, B., Qin, X., 2024. Cultivar mixtures increase crop yields and temporal yield stability globally. A meta-analysis. *Agron. Sustain. Dev.* 44 (3), 28. <https://doi.org/10.1007/s13593-024-00964-6>.
- Jägermeyr, J., Müller, C., Ruane, A.C., Elliott, J., Balkovic, J., Castillo, O., Faye, B., Foster, I., Folberth, C., Franke, J.A., Fuchs, K., Guarin, J.R., Heinke, J., Hoogenboom, G., Iizumi, T., Jain, A.K., Kelly, D., Khabarov, N., Lange, S., Rosenzweig, C., 2021. Climate impacts on global agriculture emerge earlier in new generation of climate and crop models. *Nat. Food* 2:11, 2 (11), 873–885. <https://doi.org/10.1038/s43016-021-00400-y>.
- Jiang, T., Dou, Z., Liu, J., Gao, Y., Malone, R.W., Chen, S., Feng, H., Yu, Q., Xue, G., He, J., 2020. Simulating the Influences of Soil Water Stress on Leaf Expansion and Senescence of Winter Wheat. *Agric. For. Meteorol.* 291, 108061. <https://doi.org/10.1016/J.AGRFORMET.2020.108061>.
- Kaut, A.H.E.E., Mason, H.E., Navabi, A., O'Donovan, J.T., Spaner, D., 2009. Performance and stability of performance of spring wheat variety mixtures in organic and

- conventional management systems in western Canada. *J. Agric. Sci.* 147 (2), 141–153. <https://doi.org/10.1017/S0021859608008319>.
- Kemppinen, J., Lembrechts, J.J., Van Meerbeek, K., Carnicer, J., Chardon, N.I., Kardol, P., Lenoir, J., Liu, D., Maclean, I., Pergl, J., Saccone, P., Senior, R.A., Shen, T., Słowińska, S., Vandvik, V., Oppen, J. von, Aalto, J., Ayalew, B., Bates, O., De Frenne, P., 2024. Microclimate, an important part of ecology and biogeography. *Glob. Ecol. Biogeogr.* 00, e13834. <https://doi.org/10.1111/GEB.13834>.
- Kiær, L.P., Skovgaard, I.M., Østergård, H., 2009. Grain yield increase in cereal variety mixtures: a meta-analysis of field trials. *Field Crops Res.* 114 (3), 361–373. <https://doi.org/10.1016/J.FCR.2009.09.006>.
- Kleijer, G., 2002. Selection des variétés de ble pour la qualité boulangère. *Rev. Suisse D. Agric. (Switz.)* 34 (6).
- Kristoffersen, R., Bonde Eriksen, L., Cordsen Nielsen, G., Jørgensen, J.R., Jørgensen, L.N., 2021. Management of septoria tritici blotch using cultivar mixtures. *Plant Dis.* <https://doi.org/10.1094/PDIS-01-21-0069-RE>.
- Kristoffersen, R., Jørgensen, L.N., Eriksen, L.B., Nielsen, G.C., Kiær, L.P., 2020. Control of Septoria tritici blotch by winter wheat cultivar mixtures: meta-analysis of 19 years of cultivar trials. *Field Crops Res.* 249, 107696. <https://doi.org/10.1016/J.FCR.2019.107696>.
- Lazzaro, M., Costanzo, A., Barberi, P., 2018. Single vs multiple agroecosystem services provided by common wheat cultivar mixtures: weed suppression, grain yield and quality. *Field Crops Res.* 221, 277–297. <https://doi.org/10.1016/J.FCR.2017.10.006>.
- Lenth, R.V. (2021). emmeans: Estimated Marginal Means, aka Least-Squares Means. <https://doi.org/10.1080/00031305.1980.10483031>.
- Levy Häner, L., Stamp, P., Kreuzer, M., Herrera, J.M., Pellet, D., 2015. Environmental effects on the expression of genotypic differences in wheat grain viscosity. *Crop Sci.* 55 (3), 1311–1319. <https://doi.org/10.2135/cropsci2014.07.0526>.
- Li, L., Giller, P., Peng, P., Guo, Y., Zhang, S., Hu, Z., Wang, X., Zhao, G., 2023. The genetic diversity-productivity effect in wheat cultivar mixtures at multiple levels. *Eur. J. Agron.* 142, 126676. <https://doi.org/10.1016/j.eja.2022.126676>.
- Li, C., Hoffland, E., Kuyper, T.W., Yu, Y., Zhang, C., Li, H., Zhang, F., van der Werf, W., 2020. Syndromes of production in intercropping impact yield gains. *Nat. Plants* 6 (6), 653–660. <https://doi.org/10.1038/s41477-020-0680-9>.
- Lithourgidis, A.S., Dordas, C.A., Damalas, C.A., Vlachostergios, D.N., 2011. Annual intercrops: an alternative pathway for sustainable agriculture. *Aust. J. Crop Sci.* 5 (4), 396–410.
- Loreau, M., Hector, A., 2001. Partitioning selection and complementarity in biodiversity experiments. *Nature* 412 (6842), 72–76. (<https://www.nature.com/articles/35083573>).
- Lortie, C.J., Callaway, R.M., 2006. Re-analysis of meta-analysis: support for the stress-gradient hypothesis. *J. Ecol.* 94 (1), 7–16. (<http://onlinelibrary.wiley.com/doi/10.1111/j.1365-2745.2005.01066.x/full>).
- Maddoni, G.A., Otegui, M.E., Cirilo, A.G., 2001. Plant population density, row spacing and hybrid effects on maize canopy architecture and light attenuation. *Field Crops Res.* 71 (3), 183–193. [https://doi.org/10.1016/S0378-4290\(01\)00158-7](https://doi.org/10.1016/S0378-4290(01)00158-7).
- Maestre, F.T., Callaway, R.M., Valladares, F., Lortie, C.J., 2009. Refining the stress-gradient hypothesis for competition and facilitation in plant communities. *J. Ecol.* 97 (2), 199–205. <https://doi.org/10.1111/j.1365-2745.2008.01476.x>.
- Maestre, F.T., Valladares, F., Reynolds, J.F., 2006. The stress-gradient hypothesis does not fit all relationships between plant-plant interactions and abiotic stress: further insights from arid environments. *J. Ecol.* 94 (1), 17–22. (<http://onlinelibrary.wiley.com/doi/10.1111/j.1365-2745.2005.01089.x/full>).
- Mahler, R.L., McDole, R.E., 1987. Effect of Soil pH on Crop Yield in Northern Idaho. *Agron. J.* 79 (4), 751–755. <https://doi.org/10.2134/agronj1987.00021962007900040033x>.
- Manoli, G., Huang, C.W., Bonetti, S., Domec, J.C., Marani, M., Katul, G., 2017. Competition for light and water in a coupled soil-plant system. *Adv. Water Resour.* 108, 216–230. <https://doi.org/10.1016/J.ADVWATRES.2017.08.004>.
- Marconi, E., Carcea, M., Graziano, M., Cubadda, R., 1999. Kernel properties and pasta-making quality of five european spelt wheat (*Triticum spelta* L.) cultivars. *Cereal Chem.* 76 (1), 25–29. <https://doi.org/10.1094/CCHEM.1999.76.1.25>.
- Matzen, N., Ravn Jørgensen, J., Holst, N., Nistrup Jørgensen, L., 2019. Grain quality in wheat—Impact of disease management. *Eur. J. Agron.* 103, 152–164. <https://doi.org/10.1016/J.EJA.2018.12.007>.
- Mengistu, N., Baenziger, P.S., Nelson, L.A., Eskridge, K.M., Klein, R.N., Baltensperger, D. D., Elmore, R.W., 2010. Grain yield performance and stability of cultivar blends vs. component cultivars of hard winter wheat in nebraska. *Crop Sci.* 50 (2), 617–623. <https://doi.org/10.2135/cropsci2009.05.0280>.
- Michel, S., Löschenberger, F., Ametz, C., Pachler, B., Sparry, E., Bürstmayr, H., 2019. Simultaneous selection for grain yield and protein content in genomics-assisted wheat breeding. *Theor. Appl. Genet.* 132 (6), 1745–1760. <https://doi.org/10.1007/S00122-019-03312-5/TABLES/1>.
- Mille, B., Belhaj Fraj, M., Monod, H., De Vallavieille-Pope, C., 2006. Assessing four-way mixtures of winter wheat cultivars from the performances of their two-way and individual components. *Eur. J. Plant Pathol.* 114 (2), 163–173. <https://doi.org/10.1007/S10658-005-4036-0/METRICS>.
- Olivoto, T., Lúcio, A.D.C., da Silva, J.A.G., Sari, B.G., Diel, M.I., 2019. Mean performance and stability in multi-environment trials II: selection based on multiple traits. *Agron. J.* 111 (6), 2961–2969. <https://doi.org/10.2134/agronj2019.03.0221>.
- Olivoto, T., Lúcio, A.D.C., da Silva, J.A.G., Marchioro, V.S., de Souza, V.Q., Jost, E., 2019. Mean performance and stability in multi-environment trials I: combining features of AMMI and BLUP techniques. *Agron. J.* 111 (6), 2949–2960. <https://doi.org/10.2134/agronj2019.03.0220>.
- Osman, A. (2006). The effect of growing cultivar mixtures on baking quality of organic spring wheat. 2006: SUSVAR Workshop on Cereal Diversity: Implications for Production and Products.-ITAB Press, Paris, France, 17–22.
- Pasha, I., Anjum, F.M., Butt, M.S., Sultan, J.L., 2007. Gluten quality prediction and correlation studies in spring wheats. *J. Food Qual.* 30 (4), 438–449. <https://doi.org/10.1111/J.1745-4557.2007.00133.X>.
- Reckling, M., Albertsson, J., Vermue, A., Carlsson, G., Watson, C.A., Justes, E., Bergkvist, G., Steen Jensen, Erik, Cairistiona, Topp, F.E., 2022. Diversification improves the performance of cereals in European cropping systems. *Agron. Sustain. Dev.* 2022 42:6 42 (6), 1–14. <https://doi.org/10.1007/S13593-022-00850-Z>.
- Reddy, B.V.S., Reddy, P.S., Bidinger, F., Blümmel, M., 2003. Crop management factors influencing yield and quality of crop residues. *Field Crops Res.* 84 (1–2), 57–77. [https://doi.org/10.1016/S0378-4290\(03\)00141-2](https://doi.org/10.1016/S0378-4290(03)00141-2).
- Revilla-Molina, I.M., Bastiaans, L., Van Keulen, H., Kropff, M.J., Hui, F., Castilla, N.P., Mew, T.W., Zhu, Y.Y., Leung, H., 2009. Does resource complementarity or prevention of lodging contribute to the increased productivity of rice varietal mixtures in Yunnan, China? *Field Crops Res.* 111 (3), 303–307. <https://doi.org/10.1016/J.FCR.2009.01.003>.
- Royo, C., Villegas, D., Rharrabti, Y., Blanco, R., Martos, V., García Del Moral, L.F., 2007. Grain growth and yield formation of durum wheat grown at contrasting latitudes and water regimes in a Mediterranean environment. *Cereal Res. Commun.* 34 (2–3), 1021–1028. <https://doi.org/10.1556/CRC.34.2006.2.3.233>.
- Royston, J.P., 1982. An extension of shapiro and wilk's W test for normality to large samples. *Appl. Stat.* 31 (2), 115. <https://doi.org/10.2307/2347973>.
- Saurer, W., Achermann, J., Tieche, J.D., Rudin, P., Mändli, K., 1991. Das Bewertungsschema 1990 fuer die Qualitätsbeurteilung von Weizenzüchtungen. *Landwirtsch. Schweiz* 4.
- Schmutz, A., Schöb, C., 2024. Coadaptation of coexisting plants enhances productivity in an agricultural system. *Proc. Natl. Acad. Sci.* 121 (17). <https://doi.org/10.1073/pnas.2305517121>.
- Schneider, C.A., Rasband, W.S., Eliceiri, K.W., 2012. NIH image to imageJ: 25 years of image analysis. *Nat. Methods* 9 (7), 671–675. <https://doi.org/10.1038/nmeth.2089>.
- Schöb, C., Kerle, S., Karley, A.J., Morcillo, L., Pakeman, R.J., Newton, A.C., Brooker, R. W., 2015. Intraspecific genetic diversity and composition modify species-level diversity-productivity relationships. *N. Phytol.* 205 (2), 720–730. <https://doi.org/10.1111/NPH.13043>.
- Schopf, M., Wehrli, M.C., Becker, T., Jekle, M., Scherf, K.A., 2021. Fundamental characterization of wheat gluten. *Eur. Food Res. Technol.* 247 (4), 985–997. <https://doi.org/10.1007/s00217-020-03680-z>.
- Simmonds, N.W., 1995. The relation between yield and protein in cereal grain. *J. Sci. Food Agric.* 67 (3), 309–315. <https://doi.org/10.1002/JFSA.2740670306>.
- Sirat, A., 2023. Determination of yield, yield components, and some quality parameters of bread wheat (hexaploid) cultivars with different origin in arid agricultural conditions. *Gesund Pflanz.* 75 (2), 441–454. <https://doi.org/10.1007/S10343-022-00724-0/METRICS>.
- Song, L., Li, F.M., Fan, X.W., Xiong, Y.C., Wang, W.Q., Wu, X.B., Turner, N.C., 2009. Soil water availability and plant competition affect the yield of spring wheat. *Eur. J. Agron.* 31 (1), 51–60. <https://doi.org/10.1016/J.EJA.2009.03.003>.
- St. Luce, M., Lemke, R., Gan, Y., McConkey, B., May, W., Campbell, C., Zentner, R., Wang, H., Kroebel, R., Fernandez, M., Brandt, K., 2020. Diversifying cropping systems enhances productivity, stability, and nitrogen use efficiency. *Agron. J.* 112 (3), 1517–1536. <https://doi.org/10.1002/AGJ2.20162>.
- Stefan, L., Engbersen, N., Schöb, C., 2021. Crop-weed relationships are context-dependent and cannot fully explain the positive effects of intercropping on yield. *Ecol. Appl.* <https://doi.org/10.1002/eap.2311>.
- Stefan, L., Engbersen, N., Schöb, C., 2022. Rapid transgenerational adaptation in response to intercropping reduces competition. *ELife* 11. <https://doi.org/10.7554/ELIFE.77577>.
- Stefan, L., Fossati, D., Camp, K.H., Pellet, D., Foida, F., Levy, L., 2024. Asynchrony is more important than genetic distance in driving yield stability in wheat variety mixtures. *Crop Sci.* 64 (1), 455–469. <https://doi.org/10.1002/CSC2.21151>.
- Stefan, L., Hartmann, M., Engbersen, N., Six, J., Schöb, C., 2021. Positive effects of crop diversity on productivity driven by changes in soil microbial composition. *Front. Microbiol.* 12, 808. <https://doi.org/10.3389/fmicb.2021.660749>.
- Steucl, B., Hector, A., Friedl, T., Löffke, C., Lorenz, M., Wesche, M., Kessler, M., 2012. Biodiversity effects on ecosystem functioning change along environmental stress gradients. In: *Ecology Letters*, 15, pp. 1397–1405. (<http://onlinelibrary.wiley.com/doi/10.1111/j.1461-0248.2012.01863.x/full>).
- Stomph, T.J., Dordas, C., Baranger, A., de Rijk, J., Dong, B., Evers, J., Gu, C., Li, L., Simon, J., Jensen, E.S., Wang, Q., Wang, Y., Wang, Z., Xu, H., Zhang, C., Zhang, L., Zhang, W.P., Bedoussac, L., van der Werf, W., 2020. Designing intercrops for high yield, yield stability and efficient use of resources: Are there principles. In: *Advances in Agronomy*, 160. Academic Press Inc, pp. 1–50. <https://doi.org/10.1016/bs.agron.2019.10.002>.
- Su, Y., Yu, R.P., Xu, H., Sen, Sun, J.H., Zhao, J.H., Zhang, W.P., Yang, H., Surigaogoe, S., Callaway, R.M., Li, L., 2023. Crop cultivar mixtures stabilize productivity, partly via facilitation, when conditions are less benign. *Field Crops Res.* 302, 109046. <https://doi.org/10.1016/J.FCR.2023.109046>.
- swissgranum. 2023. Conditions de prise en charge: céréales panifiables. (https://www.swissgranum.ch/Fileadmin/User_upload/Swiss-Granum/Dokumente/Richtlinien/Uebnahmebedingungen/2023/2023-04-02_Uebnahmebedingungen_Brotgetreide_2023.F.pdf).
- Tamburini, G., Bommarco, R., Wanger, T.C., Kremen, C., van der Heijden, M.G.A., Liebman, M., Hallin, S., 2020. Agricultural diversification promotes multiple ecosystem services without compromising yield. *Sci. Adv.* 6 (45), eaba1715. <https://doi.org/10.1126/sciadv.aba1715>.

- Thomas, G., Withall, D., Birkett, M., 2020. Harnessing microbial volatiles to replace pesticides and fertilizers. *Microb. Biotechnol.* 13 (5), 1366–1376. <https://doi.org/10.1111/1751-7915.13645>.
- Tilman, D., Balzer, C., Hill, J., Bafort, B.L., 2011. Global food demand and the sustainable intensification of agriculture. *Proc. Natl. Acad. Sci.* 108 (50), 20260–20264. <https://doi.org/10.1073/pnas.1116437108>.
- Tilman, D., Downing, J.A., 1994. Biodiversity and stability in grasslands. *Nature* 394 (6461), 363–365. <https://doi.org/10.1038/367363a0>.
- Tilman, D., Knops, J., Wedin, D., Reich, P., Ritchie, M., Siemann, E., 1997. The influence of functional diversity and composition on ecosystem processes. *Science* 277 (5330), 1300–1302. <https://doi.org/10.1126/science.277.5330.1300>.
- Tooker, J.F., Frank, S.D., 2012. Genotypically diverse cultivar mixtures for insect pest management and increased crop yields. *J. Appl. Ecol.* 49 (5), 974–985. <https://doi.org/10.1111/J.1365-2664.2012.02173.X>.
- Torrion, J.A., Stougaard, R.N., 2017. Impacts and limits of irrigation water management on wheat yield and quality. *Crop Sci.* 57 (6), 3239–3251. <https://doi.org/10.2135/CROPSCI2016.12.1032>.
- Tremmel-Bede, K., Mikó, P., Megyeri, M., Kovács, G., Howlett, S., Pearce, B., Wolfe, M., Löschenberger, F., Lorentz, B., Láng, L., Bedó, Z., Rakszegi, M., 2016. Stability analysis of wheat populations and mixtures based on the physical, compositional and processing properties of the seeds. *Cereal Res. Commun.* 44 (4), 694–705. <https://doi.org/10.1556/0806.44.2016.027>.
- Trinder, C., Brooker, R., Davidson, H., Robinson, D., 2012. Dynamic trajectories of growth and nitrogen capture by competing plants. *N. Phytol.* 193 (4), 948–958. <https://doi.org/10.1111/j.1469-8137.2011.04020.x>.
- Tschurr, F., Oppliger, C., Wuest, S.E., Kirchgessner, N., Walter, A., 2023. Mixing things up! Identifying early diversity benefits and facilitating the development of improved variety mixtures with high throughput field phenotyping. *Plant Phenome J.* 6 (1), e20090. <https://doi.org/10.1002/PPJ.20090>.
- Vidal, T., Saint-Jean, S., Lusley, P., Leconte, M., Ben Krima, S., Boixel, A., de Vallavieille-Pope, C., 2020. Cultivar mixture effects on disease and yield remain despite diversity in wheat height and earliness. *Plant Pathol.* 69 (6), 1148–1160. <https://doi.org/10.1111/ppa.13200>.
- Vitosh, M.L. (1998). Wheat fertility and fertilization. Wheat Facts, Departement of Crop and Soil Sciences, Michigan State University.
- Wang, S.G., Jia, S.S., Sun, D.Z., Wang, H.Y., Dong, F.F., Ma, H.X., Jing, R.L., Ma, G., 2015. Genetic basis of traits related to stomatal conductance in wheat cultivars in response to drought stress. *Photosynthetica* 53 (2), 299–305. <https://doi.org/10.1007/s11099-015-0114-5>.
- Weih, M., Karley, A.J., Newton, A.C., Kiaer, L.P., Scherber, C., Rubiales, D., Adam, E., Ajal, J., Brandmeier, J., Pappagallo, S., Villegas-Fernández, A., Reckling, M., & Tavoletti, S., 2021. Grain Yield Stability of Cereal-Legume Intercrops Is Greater Than Sole Crops in More Productive Conditions. <https://doi.org/10.3390/agriculture11030255>.
- Weiner, J., Andersen, S.B., Wille, W.K.M., Griepentrog, H.W., Olsen, J.M., 2010. Evolutionary Agroecology: the potential for cooperative, high density, weed-suppressing cereals. *Evolut. Appl.* 3 (5–6), 473–479. <https://doi.org/10.1111/J.1752-4571.2010.00144.X>.
- Wieser, H., Koehler, P., Scherf, K.A., 2023. Chemistry of wheat gluten proteins: Quantitative composition. *Cereal Chem.* 100 (1), 36–55. <https://doi.org/10.1002/cche.10553>.
- Wille, W., Pipper, C.B., Rosenqvist, E., Andersen, S.B., Weiner, J., 2017. Reducing shade avoidance responses in a cereal crop. *AoB Plants* 9 (5). <https://doi.org/10.1093/AOBPLA/PLX039>.
- Wright, A.J., Barry, K.E., Lortie, C.J., Callaway, R.M., 2021. Biodiversity and ecosystem functioning: have our experiments and indices been underestimating the role of facilitation? *J. Ecol.* 109 (5), 1962–1968. <https://doi.org/10.1111/1365-2745.13665>.
- Wu, G., 2016. Dietary protein intake and human health. *Food Funct.* 7 (3), 1251–1265. <https://doi.org/10.1039/C5FO01530H>.
- Wuest, S.E., Peter, R., Niklaus, P.A., 2021. Ecological and evolutionary approaches to improving crop variety mixtures. *Nat. Ecol. Evol.* 1–10. <https://doi.org/10.1038/s41559-021-01497-x>.
- Yahdjian, L., Sala, O.E., 2002. A rainout shelter design for intercepting different amounts of rainfall. *Oecologia* 133 (2), 95–101. <https://doi.org/10.1007/S00442-002-1024-3/METRICS>.
- Zhang, W.P., Liu, G.C., Sun, J.H., Zhang, L.Z., Weiner, J., Li, L., 2015. Growth trajectories and interspecific competitive dynamics in wheat/maize and barley/maize intercropping. *Plant Soil* 397 (1–2), 227–238. <https://doi.org/10.1007/S11104-015-2619-X/METRICS>.
- Zhang, W.P., Liu, G.C., Sun, J.H., Fornara, D., Zhang, L.Z., Zhang, F.F., Li, L., 2017. Temporal dynamics of nutrient uptake by neighbouring plant species: evidence from intercropping. *Funct. Ecol.* 31 (2), 469–479. <https://doi.org/10.1111/1365-2435.12732>.
- Zhou, K.Q., Wang, G.D., Li, Y.H., Liu, X.B., Herbert, S.J., Hashemi, M., 2014. Assessing variety mixture of continuous spring wheat (*Triticum aestivum* L.) on grain yield and flour quality in Northeast China. *Int. J. Plant Prod.* 8 (1), 91–106. (www.ijpp.info).
- Zuppinge-Dingley, D., Schmid, B., Petermann, J.S., Yadav, V., De Deyn, G.B., Flynn, D. F., 2014. Selection for niche differentiation in plant communities increases biodiversity effects. *Nature* 515 (7525), 108–111. (<https://www.nature.com/nature/journal/v515/n7525/abs/nature13869.html>).