

New Holland T6.150

Tractor Test No. 1981/12

APPLICANT

New Holland Traktoren Center Schweiz
Murzlenstrasse 80
8166 Niederweningen

TRACTOR

Manufacturer: CNH
Model: New Holland T6.150
Approval certificate no.: 4NA4 36

SUSPENSION AND BRAKES

Central four-wheel drive with powershift transmission
Front axle suspension (disengageable)
Wet disc brake on front and rear axle
Automatic all-wheel activation
Mechanical parking brake

DRIVER PROTECTION

Integrated safety cab with mechanical suspension

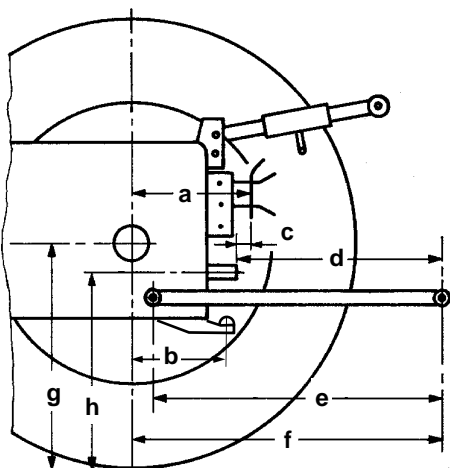


TYRES

	Track width:
front: 480/65 R28	1780 mm
rear: 600/65 R38	1730 mm

DIMENSIONS

Length:	— mm
With front mounting:	4950 mm
Front overhang from steering wheel:	2900 mm
Width:	2480 mm
Height:	3020 mm
Wheelbase:	2450 mm
Ground clearance:	420 mm
Turning diameter:	11,9 m (without four-wheel drive) 12,5 m (with four-wheel drive)



Rear

a:	740 mm
b:	— mm
c:	200 mm
d:	600 mm
e:	1000 mm
f:	1140 mm
g:	840 mm
h:	800 mm

Front

d:	— mm
e:	930 mm
f:	1240 mm
g:	630 mm
h:	— mm

TEST EQUIPMENT

- front 3-Point Hitch
- air-conditioning compressor
- air compressor

WEIGHT

in test equipment

Front:	2640 kg	44 %
Rear:	3310 kg	
Total:	5950 kg	

Permissible front axle load:	4100 kg
Permissible rear axle load:	7300 kg
Permissible total weight:	9000 kg

Payload:	3050 kg
----------	---------

Towed weight, braked:	32 000 kg
-----------------------	-----------

CAPACITIES

Fuel tank	175 l	
AdBlue tank	37 l	
Engine oil	10 l	(change interval 600 h)
Gearbox and Hydraulic oil	62 l	(change interval 1200 h)

New Holland T6.150

ENGINE (Manufacturer's data)

Manufacturer: FPT
Model: F4 DFE 413B
Injection: Diesel direct injection
 CommonRail
Supercharging: Exhaust gas turbocharger with wastegate and air-to-air intercooling
Exhaust emission treatment: SCR

Bore/stroke: 104 / 132 mm
Cylinders / capacity: 4 / 4485 cm³
Cooling: Water, viscous fan

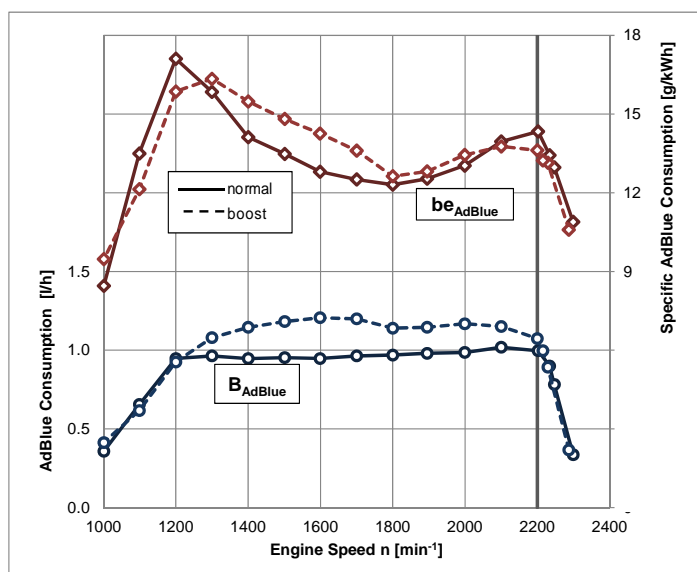
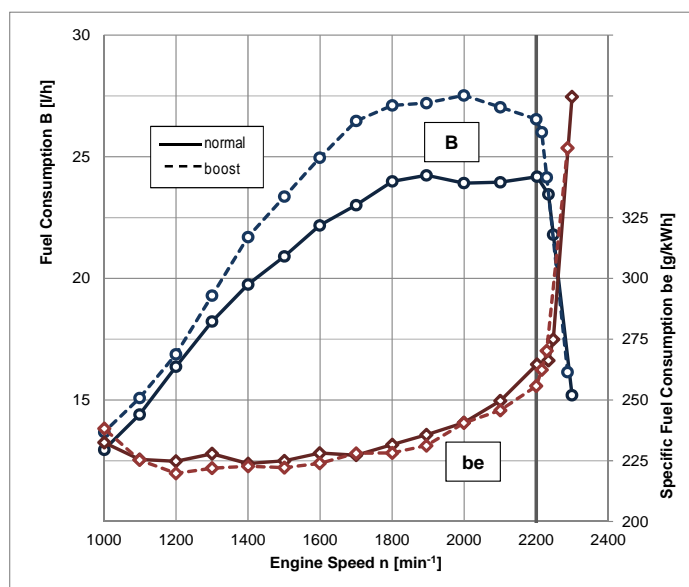
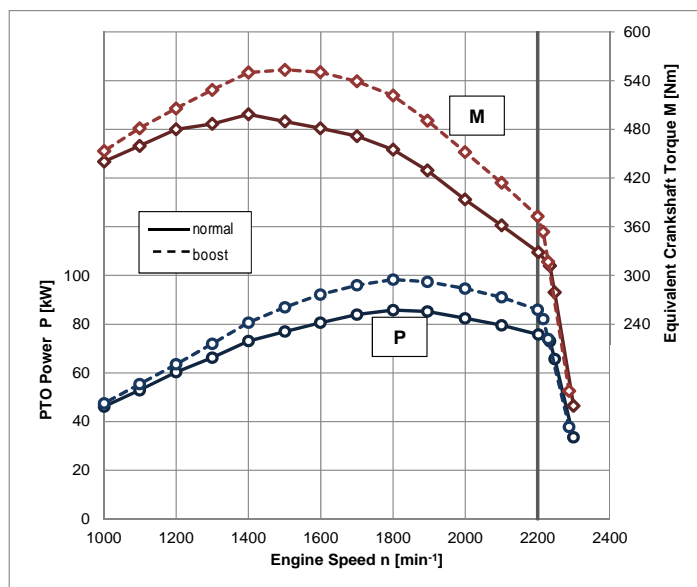
Rated power: 89 kW (121 PS) ECE R120
With boost: 103 kW (140 PS) ECE R120

Rated engine speed: 2200 min⁻¹
Exhaust stage: IIIB

POWER TAKE-OFF MEASUREMENT

Criteria for boost activation

- Transportation tasks: from 13th gear onwards
- PTO-driven tasks: minimum torque of 250 Nm and minimum speed of 0,5 km/h



Measurement conditions:

- air temperature 20 °C
- relative atmospheric humidity 50 %
- atmospheric pressure 957 mbar

New Holland T6.150

Full load test values

		Speed [min ⁻¹]		Power		Fuel consumption		AdBlue consumption	
		Engine	PTO	kW	HP	Specific [g/kWh]	Absolute [l/h]	Specific [g/kWh]	Absolute [l/h]
Rated power	normal	2200	1162	75,8	103,0	265	24,2	14	1,0
	boost			85,9	116,8	256	26,5	14	1,1
Maximum power	normal	1800	951	85,5	116,2	231	23,9	12	1,0
	boost			98,3	133,7	228	27,1	13	1,1
Normal speed PTO	normal	1893	1000	85,2	115,8	236	24,2	13	1,0
	boost			97,4	132,4	231	27,2	13	1,2

Max. torque: 499 Nm at 1400 min⁻¹
 Torque increase: 52 % at 36 % speed drop
 Starting torque: 134 %
 Idling speed: 850 min⁻¹
 Cutoff speed: 2350 min⁻¹

Boost
 553 Nm, at 1500 min⁻¹
 48 % at 32 % speed drop
 122 %

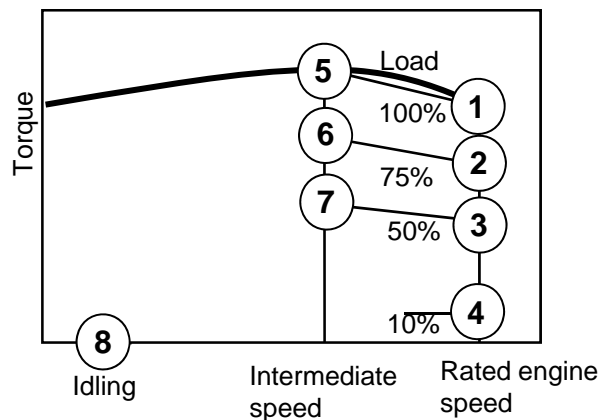
Partial load values

Fuel consumption with 42,5 % partial load at normal PTO speed

PTO shaft Fuel AdBlue
 1000 min⁻¹: 286 g/kWh, 12,5 l/h 13 g/kWh, 0,4 l/h
 1000E min⁻¹: — g/kWh, — l/h — g/kWh, — l/h

Boost
 Fuel AdBlue
 285 g/kWh, 14,2 l/h 14 g/kWh, 0,5 l/h
 — g/kWh, — l/h — g/kWh, — l/h

In characteristic diagram (with boost)



Measuring point	Fuel consumption		AdBlue consumption	
	Specific [g/kWh]	Absolute [l/h]	Specific [g/kWh]	Absolute [l/h]
1	256	26,5	14	1,1
2	268	21,0	14	0,8
3	308	16,1	13	0,5
4	749	8,1	6	0,1
5	222	23,4	15	1,2
6	221	17,6	15	0,9
7	241	12,7	12	0,5
8	-	1,7	-	0,0

EMISSIONS

Exhaust gas emissions

- Black smoke 0,10 SZ (BOSCH)

Emissions according to ISO 8178-4, C1

(with boost)

- Hydrocarbons HC 0,03 g/kWh*
- Nitrogen oxides NOx 4,08 g/kWh*
- Carbon monoxide CO 0,51 g/kWh*
- Particulate number Pn 2,2E13 #/kWh*
- Cycle consumption
 - Fuel 265 g/kWh* (16,0 l/h)
 - AdBlue 14 g/kWh* (0,6 l/h)

Noise level

- Noise level at driver's ear: 74,5 dB(A)
- Passing noise: 83,0 dB(A)

* With reference to PTO power



Schweizerische Eidgenossenschaft
 Confédération suisse
 Confederazione Svizzera
 Confederaziun svizra

Federal Department
 of Economic Affairs DEA
 Agroscope Reckenholz-Tänikon
 Research Station ART

Swiss Confederation

New Holland T6.150

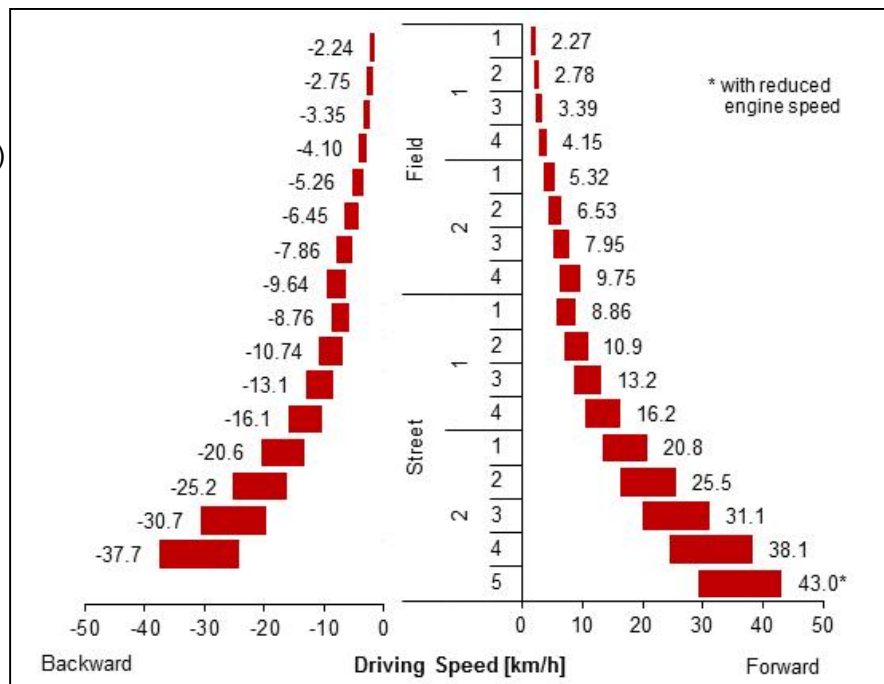
TRANSMISSION

Travel gear

- 17 forward and 16 reverse gears
- Wet multi-disc clutch
- 2 groups
- with 2 gears (electrohydraulic engagement)
- 4 (5) powershift stages
- Powershift reverse gearbox

Driving speed at rated engine speed

(tyre radius $r = 825$ mm)



PTO transmission

Rear

- Wet multi-plate clutch, electro-hydraulic engagement

Front

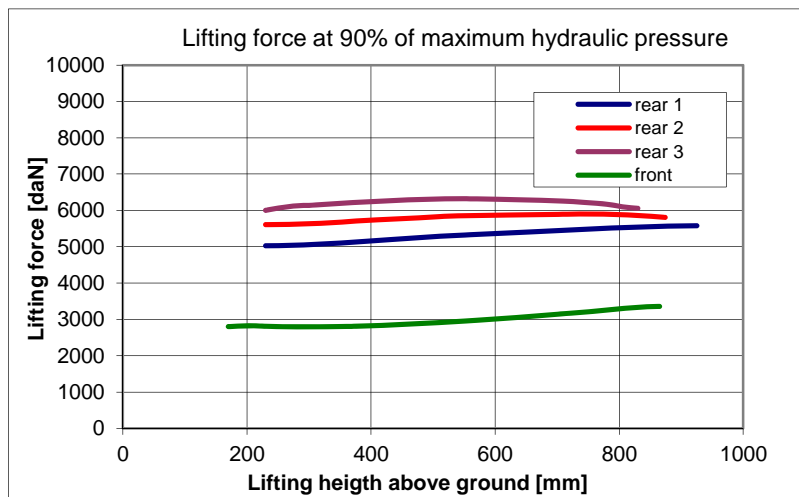
- —

	Rear						Front
PTO shaft	430	540	540E	1000	1000 E	Ground speed	1000
Engine speed	-	1969	1546	1893	-	-	-

HYDRAULICS

Remote hydraulics

- max. oil pressure: 207,1 bar
- max. flow rate : 104,1 l/min
- flow rate: 99,7 l/min at 176,0 bar
- max. hydraulic power: 30,7 kW (98,4 l/min and 187,3 bar)
- max. flow rate through a single coupler: 98,8 l/min
- max. quantity of oil taken: 38 (45) l



3-Point Hitch

Rear

3-Point Hitch, category: III
Control hydraulics via lower link, (EHR)

Front

3-Point Hitch, category: II / III

Measurement		Lifting movement	Lifting force at 90% pressure	
			Continuous	Maximum
Rear	Lower link, short	695 mm	5025 daN	5580 daN
	Lower link, medium	644 mm	5605 daN	5905 daN
	Lower link, long	600 mm	5960 daN	6325 daN
Front		695 mm (170 mm to 865 mm)	2785 daN	3375 daN

Explanatory notes on tractor test at:

www.traktorentest.ch



Schweizerische Eidgenossenschaft
Confédération suisse
Confederazione Svizzera
Confederaziun svizra

Federal Department
of Economic Affairs DEA
Agroscope Reckenholz-Tänikon
Research Station ART

Swiss Confederation