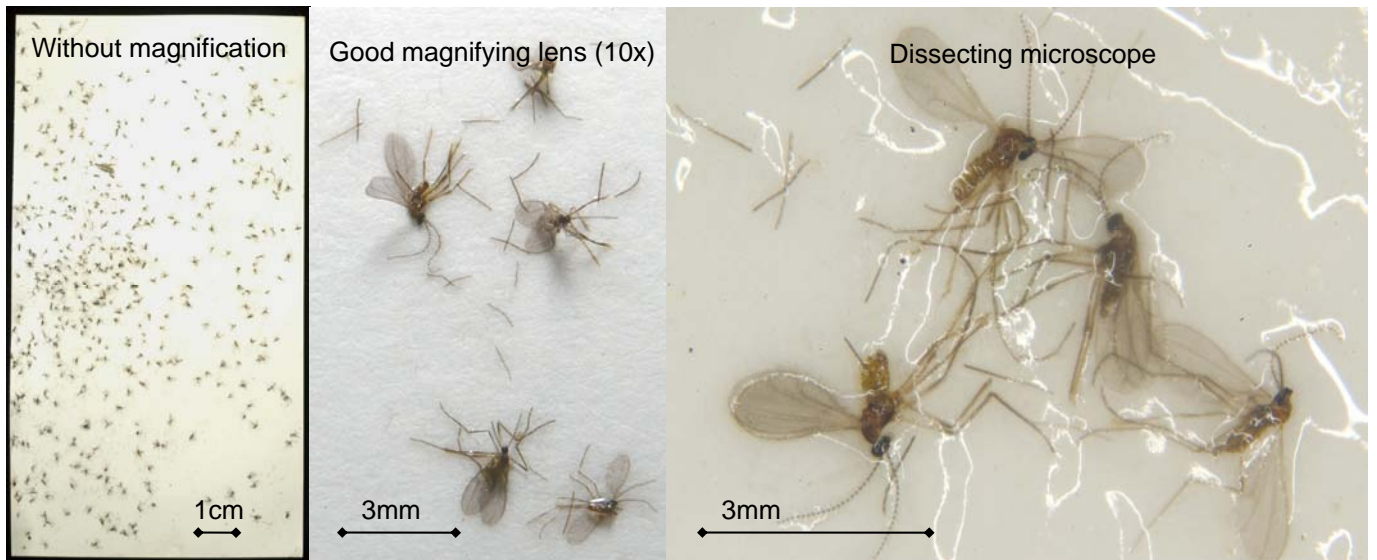


# Identification of Swede midge males (*Contarinia nasturtii*) on sticky papers of pheromone traps

R. Eder, J. Samietz, R. Baur, Photos: J. Samietz, H.U. Höpli

## Sticky paper: overview



## General characters (habitus): shape and colour



## Antennae and wing venation



# Discrimination between *Contarinia nasturtii* and other, similar species

## Shape and colour



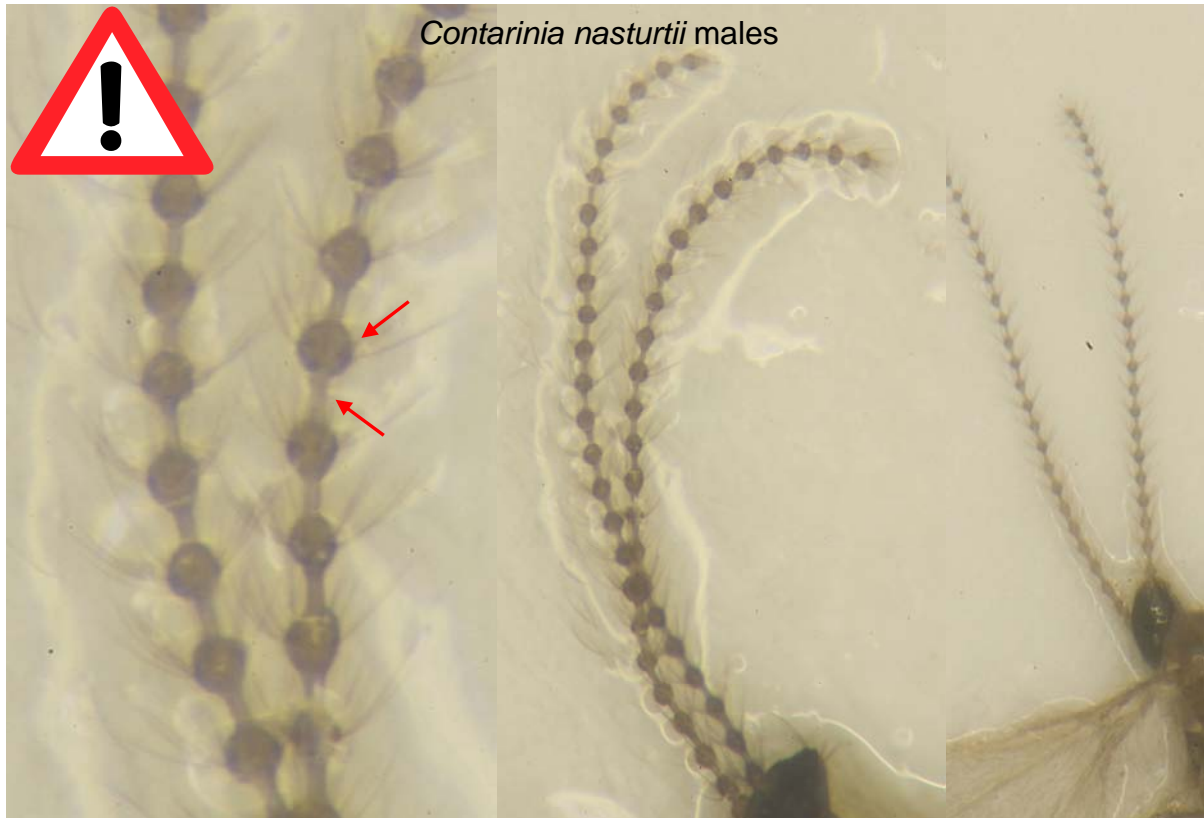
*Contarinia nasturtii* males

Traits of *C. nasturtii* males: Brownish-greyish coloured body; body size: approx. 1.5 mm, body delicately slender with long legs that are often torn off and scattered on the sticky paper. Long antennae, either embedded in the glue or sticking out (see also next page); body not yellowish, not lightly reddish, not orange, not glossy black.

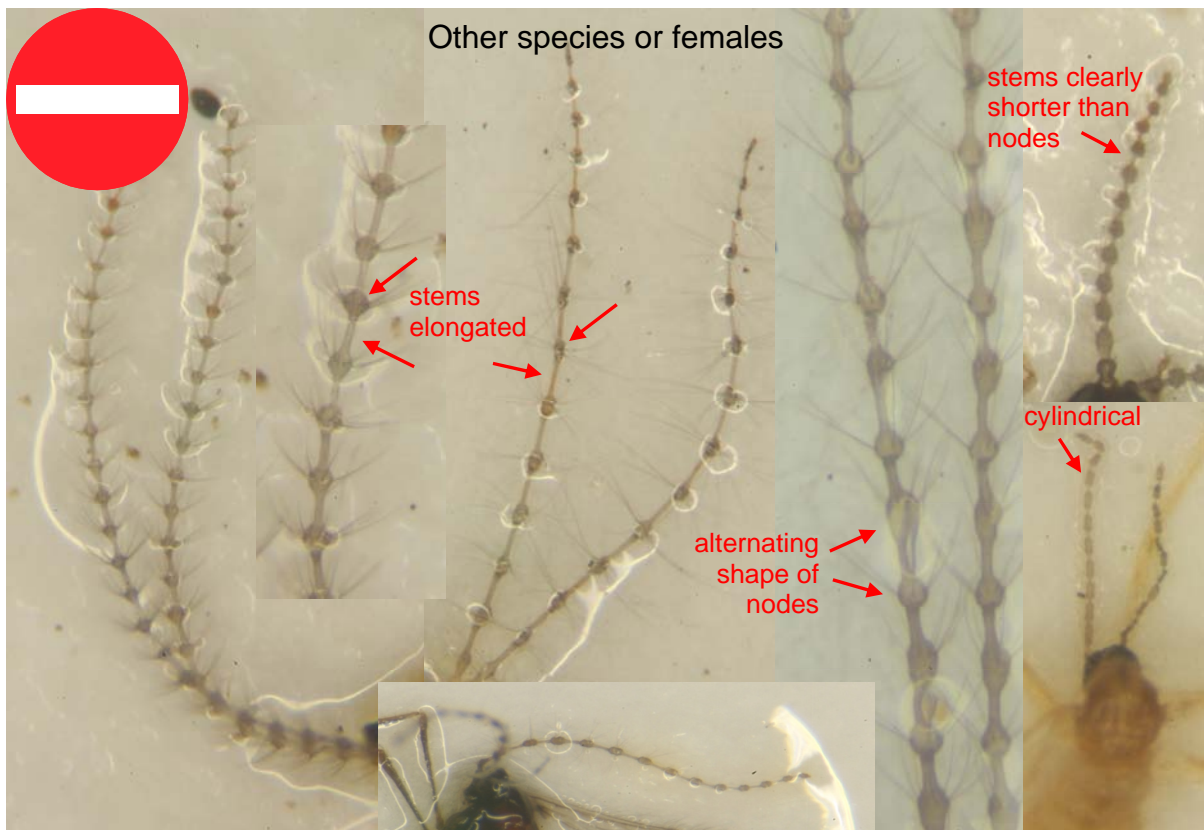


Other species or females

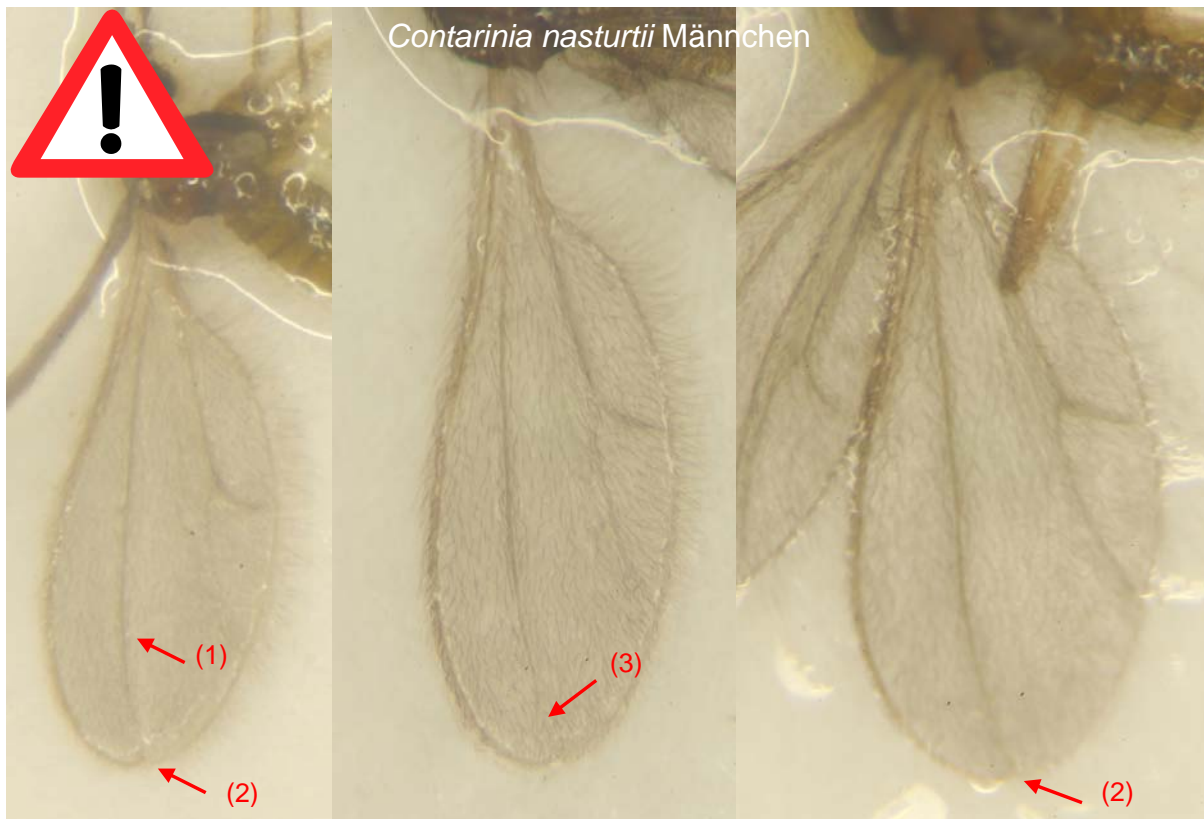
## Antennae



Traits of *C. nasturtii* males: Antennae with 24 antennal segments consisting of orbicular parts (nodes) and neck-like parts (stems); stems not elongated but of the same length as the diameter of the nodes; all nodes equally orbicular; not alternating (wider, smaller), not cylindrical, not conical, not diamond-shaped.



## Wing venation



Traits of *C. nasturtii* males: Second wing vein straight or almost straight in the most distal third (1). If slightly bent towards the rear end of the wing, then still joining the edge rectangular close to the wing apex (2). Vein distally vanishing, sometimes hardly visible near the apex (3). Wing surface pubescent (covered with short fine hairs).

