

Zetor Proxima 90

Tractor Test No. 1977/12

APPLICANT

Land- und Baumaschinenservice
Andreas Lehmann
4512 Bellach

TRACTOR

Manufacturer: Zetor
Model: Zetor Proxima 90
Approval certificate no.: —

SUSPENSION AND BRAKES

Central four-wheel drive with powershift transmission

Wet disc brake on front and rear axle
Mechanical parking brake

DRIVER PROTECTION

Integrated safety cab



TYRES

	Track width:
front: 340/85 R24	1670 mm
rear: 420/85 R34	1570 mm

DIMENSIONS

Length:	3980 mm
With front mounting:	— mm
Front overhang from steering wheel:	— mm
Width:	2040 mm
Height:	2670 mm
Wheelbase:	2320 mm
Ground clearance:	440 mm
Turning diameter:	10,4 m (without four-wheel drive) 11,4 m (with four-wheel drive)

TEST EQUIPMENT

- air compressor

WEIGHT

in test equipment

Front:	1570 kg	41 %
Rear:	2230 kg	
Total:	3800 kg	

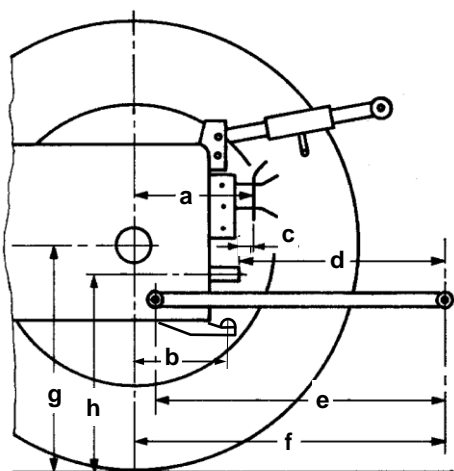
Permissible front axle load:	2500 kg
Permissible rear axle load:	5000 kg
Permissible total weight:	5400 kg

Payload:	1600 kg
----------	---------

Towed weight, braked:	32 000 kg
-----------------------	-----------

CAPACITIES

Fuel tank	150 l	
AdBlue tank	— l	
Engine oil	10 l	(change interval 500 h)
Gearbox and Hydraulic oil	66 l	(change interval 1500 h)



Rear

a:	530 mm
b:	— mm
c:	220 mm
d:	690 mm
e:	900 mm
f:	1000 mm
g:	750 mm
h:	740 mm

Front

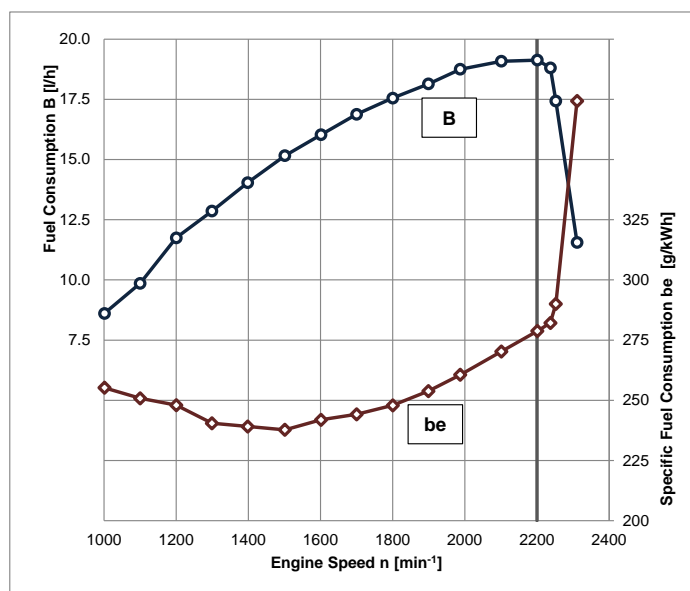
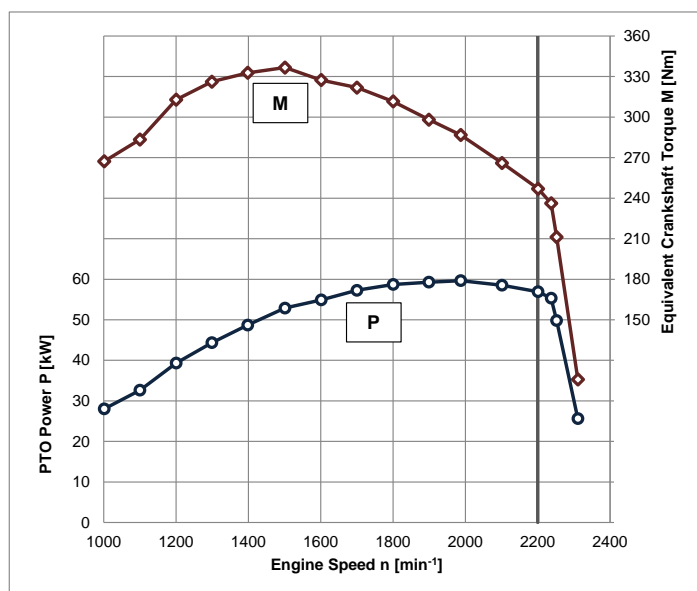
d:	— mm
e:	— mm
f:	— mm
g:	— mm
h:	— mm

Zetor Proxima 90

ENGINE (Manufacturer's data)

Manufacturer:	Zetor
Model:	1205
Injection:	Diesel direct injection
Supercharging:	Exhaust gas turbocharger and air-to-air intercooling External cooled exhaust gas recirculation
Exhaust emission treatment:	—
Bore/stroke:	105 / 120 mm
Cylinders / capacity:	4 / 4156 cm ³
Cooling:	Water
Rated power:	63 kW (86 PS) ECE R120
Rated engine speed:	2200 min ⁻¹
Exhaust stage:	IIIA

POWER TAKE-OFF MEASUREMENT



Measurement conditions:

- air temperature 20 °C
- relative atmospheric humidity 34 %
- atmospheric pressure 960 mbar

Zetor Proxima 90

Full load test values

	Speed [min ⁻¹]		Power		Fuel consumption		AdBlue consumption	
	Engine	PTO	kW	HP	Specific [g/kWh]	Absolute [l/h]	Specific [g/kWh]	Absolute [l/h]
Rated power	2200	598	56,9	77,4	279	19,1		
Maximum power	1987	540	59,6	80,9	261	18,8		
Normal speed PTO	1987	540	59,6	80,9	261	18,8		

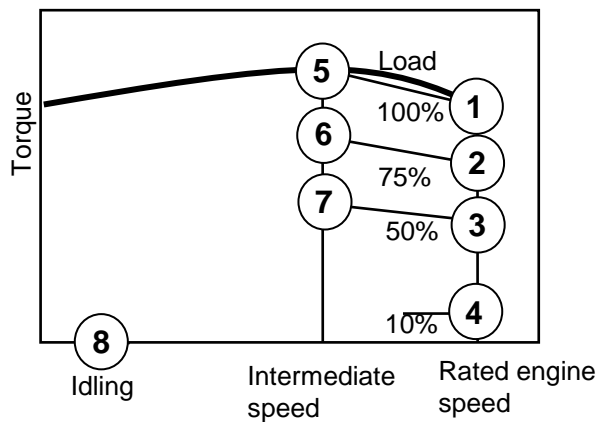
Max. torque: 337 Nm at 1500 min⁻¹
 Torque increase: 36 % at 32 % speed drop
 Starting torque: 108 %
 Idling speed: 805 min⁻¹
 Cutoff speed: 2375 min⁻¹

Partial load values

Fuel consumption with 42,5 % partial load at normal PTO speed

PTO shaft Fuel AdBlue
 1000 min⁻¹: 312 g/kWh, 9,5 l/h — g/kWh, — l/h
 1000E min⁻¹: — g/kWh, — l/h — g/kWh, — l/h

In characteristic diagram



Measuring point	Fuel consumption		AdBlue consumption	
	Specific [g/kWh]	Absolute [l/h]	Specific [g/kWh]	Absolute [l/h]
1	279	19,1		
2	296	15,6		
3	337	11,7		
4	892	6,2		
5	238	15,2		
6	242	11,4		
7	260	8,2		
8	-	1,0		

EMISSIONS

Exhaust gas emissions

- Black smoke 1,30 SZ (BOSCH)

Emissions according to ISO 8178-4, C1

(with boost)

- Hydrocarbons HC 0,85 g/kWh*
- Nitrogen oxides NOx 4,93 g/kWh*
- Carbon monoxide CO 1,51 g/kWh*
- Particulate number Pn 2,8E14 #/kWh*
- Cycle consumption
 - Fuel 292 g/kWh* (11,2 l/h)
 - AdBlue — g/kWh* (— l/h)

Noise level

- Noise level at driver's ear: 82,0 dB(A)
- Passing noise: 85,0 dB(A)

* With reference to PTO power



Schweizerische Eidgenossenschaft
 Confédération suisse
 Confederazione Svizzera
 Confederaziun svizra

Federal Department
 of Economic Affairs DEA
 Agroscope Reckenholz-Tänikon
 Research Station ART

Swiss Confederation

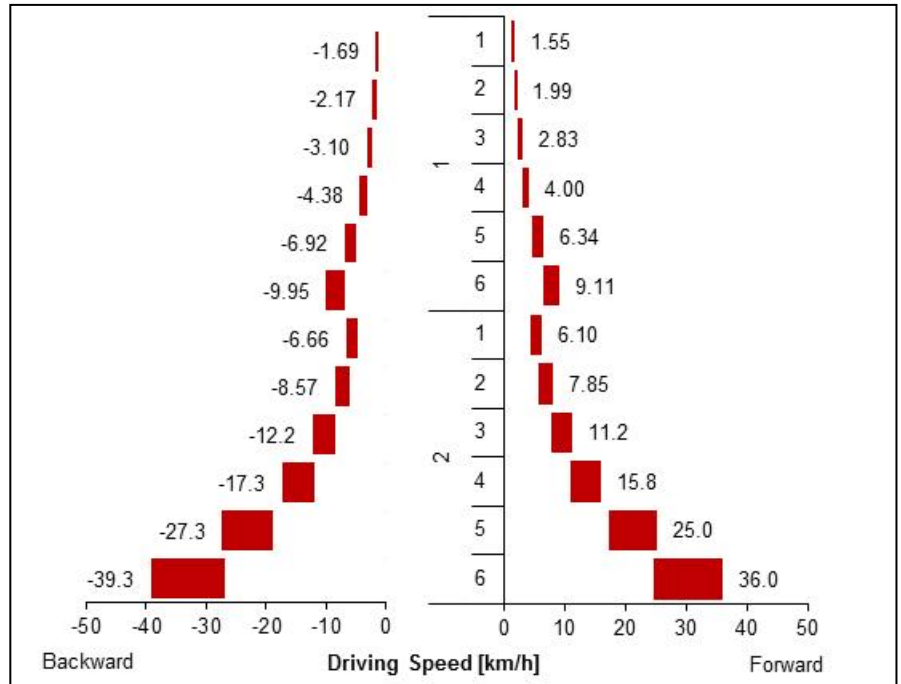
Zetor Proxima 90

TRANSMISSION

Travel gear

- Dry clutch
- 2 groups
- 6 gears
- Synchromesh reverse gearbox

Driving speed at rated engine speed
(tyre radius $r = 750$ mm)



PTO transmission

Rear

- Dry clutch, air-assisted operation

Front

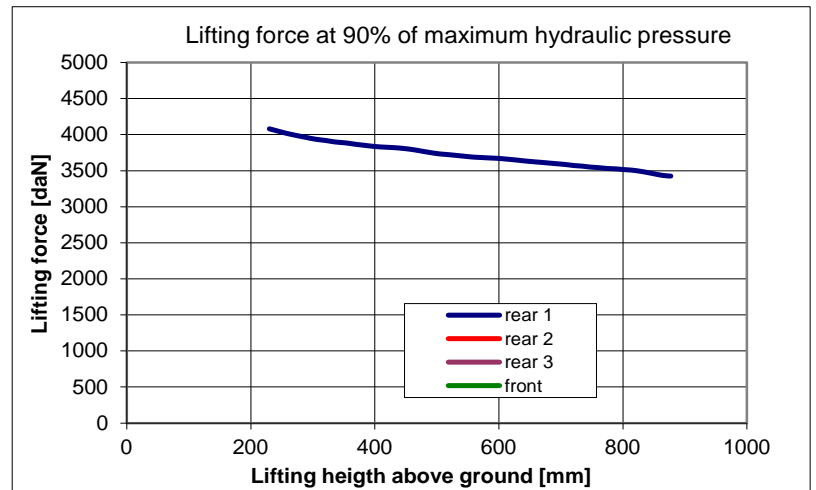
- —

PTO shaft	Rear					Ground speed	Front
	430	540	540E	1000	1000 E		
Engine speed	-	1987	-	1950	-	yes	-

HYDRAULICS

Remote hydraulics

- max. oil pressure: 190,4 bar
- max. flow rate : 48,3 l/min
- flow rate: 46,6 l/min at 161,8 bar
- max. hydraulic power: 12,8 kW (45,7 l/min and 168,6 bar)
- max. flow rate through a single coupler: 48,3 l/min
- max. quantity of oil taken: 20 l



3-Point Hitch

Rear

3-Point Hitch, category: II
Control hydraulics mechanical via lower link

Front

- —

Measurement	Lifting movement	Lifting force at 90% pressure		
		Continuous	Maximum	
Rear	Lower link, short	647 mm	3415 daN	4105 daN
	Lower link, medium			
	Lower link, long			
Front				

Explanatory notes on tractor test at:
www.traktorentest.ch



Schweizerische Eidgenossenschaft
Confédération suisse
Confederazione Svizzera
Confederaziun svizra

Federal Department
of Economic Affairs DEA
Agroscope Reckenholz-Tänikon
Research Station ART

Swiss Confederation