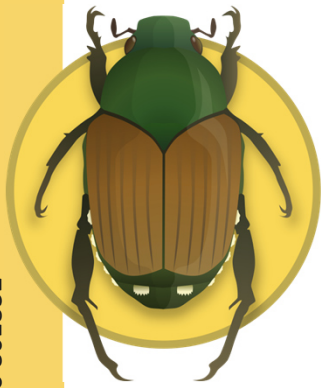


IPM Popillia

Integrated Pest Management of the Japanese Beetle

➤ www.popillia.eu



Detecting invasion

- Automated monitoring
- Citizen science
- Risk based surveillance strategy
- Phylogeography



Understanding establishment

- Interactions between invasive species and (soil) microbiome
- Reasons for success or failure of population establishment



Providing tools

- Biological and biotechnical control
- Low risk insecticides
- IPM-toolbox for *Popillia* control



Project team:



Dipartimento delle finanze e dell'economia



UNIVERSITÀ
DI SIENA
1240



Associazione svizzera imprenditori giardinieri

