



A novel parasitic beetle, *Procoryphaeus violaceus*, in stingless bees, *Tetragonula pagdeni*

Domenic Walter Camenzind, Wankuson Chanasit, Christoph Germann, Orlando Yañez, Peter Neumann, Jakkrawut Maitip & Lars Straub

To cite this article: Domenic Walter Camenzind, Wankuson Chanasit, Christoph Germann, Orlando Yañez, Peter Neumann, Jakkrawut Maitip & Lars Straub (2024) A novel parasitic beetle, *Procoryphaeus violaceus*, in stingless bees, *Tetragonula pagdeni*, Journal of Apicultural Research, 63:4, 688-690, DOI: [10.1080/00218839.2024.2348416](https://doi.org/10.1080/00218839.2024.2348416)

To link to this article: <https://doi.org/10.1080/00218839.2024.2348416>



© 2024 The Author(s). Published by Informa UK Limited, trading as Taylor & Francis Group.



Published online: 13 May 2024.



Submit your article to this journal [↗](#)



Article views: 464



View related articles [↗](#)



View Crossmark data [↗](#)



A novel parasitic beetle, *Procoryphaeus violaceus*, in stingless bees, *Tetragonula pagdeni*

Domenic Walter Camenzind^a, Wankuson Chanasit^b, Christoph Germann^{c,d}, Orlando Yañez^a, Peter Neumann^{a,e}, Jakkrawut Maitip^f and Lars Straub^{a,f,g}

^aInstitute of Bee Health, Vetsuisse Faculty, University of Bern, Bern, Switzerland; ^bDepartment of Biology, Faculty of Science, Thaksin University, Papayom, Thailand; ^cDepartment of Biosciences, Naturhistorisches Museum Basel, Basel, Switzerland; ^dNaturhistorisches Museum Bern, Bern, Switzerland; ^eSwiss Bee Research Centre, Agroscope, Bern, Switzerland; ^fFaculty of Science, Energy, and Environment, King Mongkut's University of Technology North Bangkok, Bangkok, Thailand; ^gDepartment of Biological Sciences, Royal Holloway University of London, Egham, UK

ABSTRACT

Two beetle parasites of social bees are known to cause colony collapse: small hive beetles, *Aethina tumida*, in honey bees and *Haptoncus luteolus* in stingless bees. Here, we report for the first time parasitic beetles, *Procoryphaeus violaceus*, causing colony collapse in stingless bees, *Tetragonula pagdeni*.

ARTICLE HISTORY

Received 22 August 2023
Accepted 12 April 2024

KEYWORDS

Beekeeping; Coleoptera; Histeridae; parasites; social bees

In March 2023, beekeepers detected that seven out of 54 *Tetragonula pagdeni* colonies in Songkhla province (Thailand) had collapsed due to *P. violaceus* infestations (Figure 1(a)). Careful visual inspections of the collapsed colonies revealed that none of them had brood, but all had damaged honey and pollen pots as well as cerumen present. Three colonies also still had a small number of adult bees (<100; Figure 1(b)). All collapsed colonies were highly infested with *P. violaceus* larvae ($N > 100$) throughout the entire hives. We further examined the collapsed colonies in the field (Neumann et al., 2013) and found three adult beetles of *P. violaceus*, but neither eggs nor pupae. Three of the seven infested colonies were randomly selected and brought to the laboratory for thorough dissections. In addition, three non-collapsed colonies were screened in the field as described above and no larvae, pupae or adult *P. violaceus* were detected and the colonies were considered healthy (Grüter, 2021).

The laboratory colony dissections included carefully combing through the entire hive boxes and content (i.e., cerumen, honey, and pollen pots as well as slimy degraded hive material) and recording the total number of *P. violaceus* eggs, larvae, pupae,

as well as adults present (Figure 2). No living adult bees or brood patches were found indicating prior prepared absconding similar to heavily small hive beetle infested *A. mellifera* colonies (Neumann & Elzen, 2004). Across all colonies, a total of 853 larvae ($N = 398, 148, \text{ and } 307$ per colony), eight pupae ($N = 1, 0, \text{ and } 7$ per colony), and 5 adult *P. violaceus* ($N = 1, 1, \text{ and } 3$ per colony) were found, but no eggs. Most larvae (~70%) were found within the pollen pots apparently feeding on pollen (Figure 1(c)), whereas the remaining larvae were found along the bottom of the hive within wax and cerumen patches. All three colonies had slimy and/or partially destroyed wax, cerumen, honey pots, and pollen pots, thereby resembling clinical symptoms of small hive beetle infestations (Neumann & Elzen, 2004). Interestingly, all beetle pupae were exclusively found in distinct bulges ($N = 8$) in the cerumen and wax along the bottom surface of the three nest boxes (Figure 1(d)). A subsample of beetle larvae, pupae as well as adult samples were taken from all colonies and stored in RNAlater until further use.

Three beetle specimens were compared morphologically with specimens conserved in the Georg Frey collection at Naturhistorisches Museum Basel

CONTACT Domenic Walter Camenzind  domenic.camenzind@unibe.ch

D.W.C. and L.S. were responsible for conception and design. Material preparation and data collection were performed by D.W.C., L.S., & W.C. DNA barcoding was conducted by O.Y. and morphological species identification by C.G. J.M. and W.C., were responsible for research organization as well as providing laboratory material and infrastructure in Thailand. P.N. provided laboratory material and facilities in Switzerland. The first draft of the manuscript was written by D.W.C. and L.S. and all authors commented on previous versions of the manuscript. All authors read and approved the final manuscript.

© 2024 The Author(s). Published by Informa UK Limited, trading as Taylor & Francis Group.

This is an Open Access article distributed under the terms of the Creative Commons Attribution License (<http://creativecommons.org/licenses/by/4.0/>), which permits unrestricted use, distribution, and reproduction in any medium, provided the original work is properly cited. The terms on which this article has been published allow the posting of the Accepted Manuscript in a repository by the author(s) or with their consent.

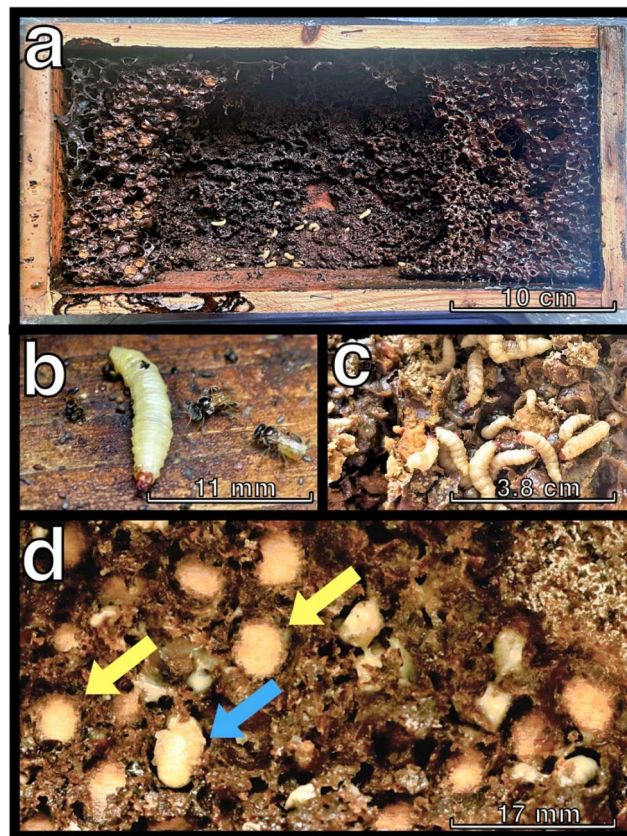


Figure 1. *Tetragonula pagdeni* colonies infested with *Procoryphaeus violaceus*: (a) A collapsed parasitized colony; (b) *T. pagdeni* workers with *P. violaceus* larvae; (c) *P. violaceus* larvae feeding in pollen pots; (d) *P. violaceus* pupation sites at bottom of the hive boxes. The blue arrow indicates a pupa, whereas yellow arrows indicate empty pupation sites from which adults most likely emerged.

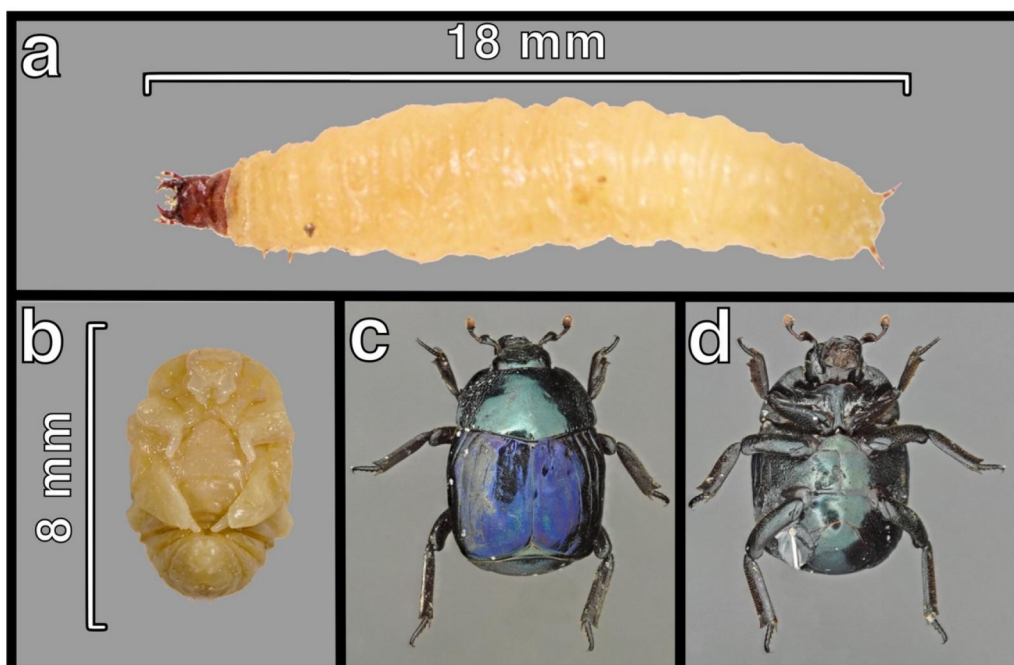


Figure 2. Developmental stages of the beetle *Procoryphaeus violaceus*: (a) Larva (lateral), (b) pupa (ventral), as well (c) adult dorsal and (d) adult ventral.

and the recent revision by Lackner (2015) was used for a detailed check. Furthermore, a high resolved stacking photo was used for a critical review of one

of the specimens by Thomas Lackner (Bavarian State Collection of Zoology) (Figure 2(c,d)). Following Folmer et al. (1994), DNA barcoding on a subsample

of larvae, pupae, and adults was conducted to confirm that larvae and pupae were of the same species as the adults. DNA was extracted from the specimen using a Nucleospin® Tissue kit (Macherey–Nagel, Germany) and following the suppliers' recommended protocol. The PCR products were cleaned using a NucleoSpin® Gel and PCR Clean-up kit (Macherey–Nagel, Germany) and commercially sequenced by FASTERIS SA™ (Geneva, Switzerland). The DNA barcoding revealed that all samples were of the same species, yet no matches were found on either GenBank or Barcode of Life database (BOLD). The COI sequences were submitted to both databases. BOLD accessions include full collection details along with diagnostic images (Figure 2) of the specimens produced by using a Zeiss Stemi 508 stereomicroscope and a Canon D600 camera (Figure 2(a,b)).

To our knowledge, this is the first report of *P. violaceus* in association with social bees and infestations leading to *T. pagdeni* colony collapse. The genus *Procoryphaeus*, ($N=3$ species) belongs to the family Histeridae and is known to occur in Malaysia, Indonesia as well as Thailand (Lackner, 2015). Other Histeridae beetles are known as scavengers, often feeding on decaying organic matter (e.g., Hawkeswood, 2011) and can be associated with social bees where they predate on larvae and pupae as well as feed of dead adult stingless bees yet these attacks usually do not lead to colony collapse (Carvalho et al., 2021). Interestingly, adult *Procoryphaeus wallacei* were observed attacking *Tetragonula minangkabau*, colonies in Indonesia, but colony collapse was not reported (Inoue et al., 1993). The presence of pupae suggests that *P. violaceus* can complete its entire life cycle within colonies of *T. pagdeni* similar to *Haptoncus luteolus* in *Tetragonula laeviceps* (Krishnan et al., 2015). Possibly, the seven *T. pagdeni* collapsing colonies were weak or stressed, analogous to *A. tumida* (Neumann et al., 2016), but mostly established healthy *T. minangkabau* colonies were attacked by adult *P. wallacei* (Inoue et al., 1993). Understanding why colony collapse and whether *Procoryphaeus* species can exploit different social bee species remains to be investigated. We thus raise caution that *P. violaceus* may cause damage to the Meliponini industry in Southeast-Asia as well as colonies of other wild and managed social bees. Subsequently, there is an urgent need to improve our understanding of the beetle's biology and behavior as well as how it interacts with its host. Such knowledge will enable the implementation of potential control measures to protect colonies as well as the spread of the parasite.

Acknowledgements

We sincerely thank the beekeepers for informing the authors. We would also like to thank the following persons for their

valuable work enabling this publication: Amonwit Polgate for his technical support with assisting in dissecting and taking photos of the stingless bee colonies during the laboratory dissections, Camille Morgaint for her help with the molecular analyses, Kanokwan Klaithin for the morphological confirmation of the stingless bee species and Thomas Lackner (Bavarian State Collection of Zoology) for his valuable advice, when morphologically determining the beetle species.

Disclosure statement

The authors declare no competing interests.

Funding

Support was provided by the Vinetum Foundation to L.S. and P.N., as well as the Postdoctoral Fellowship Program, King Mongkut's University of Technology North Bangkok, to L.S.

References

- Carvalho, A. F., Leivas, F. W. T., & Souza, T. B. (2021). Feeding habits and behavior of a bee killer: *Holelepta reichii* (Coleoptera, Histeridae). *Neotropical Entomology*, 50(2), 317–320. <https://doi.org/10.1007/s13744-020-00818-2>
- Folmer, O., Black, M., Hoeh, W., Lutz, R., & Vrijenhoek, R. (1994). DNA primers for amplification of mitochondrial cytochrome c oxidase subunit I from diverse metazoan invertebrates. *Molecular Marine Biology and Biotechnology*, 3(5), 294–299.
- Grüter, C. (2021). *Stingless bees: Their behaviour, ecology and evolution* (1st ed., pp. 385). Springer Cham.
- Hawkeswood, T. J. (2011). Notes on some Staphylinidae and Histeridae (Coleoptera) from the dead carcass of a Little Black Cormorant (*Phalacrocorax sulcirostris*, Phalacrocoracidae). *Calodema*, 147, 1–3.
- Inoue, T., Nakamura, K., Salmah, S., & Abbas, I. (1993). Population dynamics of animals in unpredictably changing tropical environments. *Journal of Biosciences*, 18(4), 425–455. <https://doi.org/10.1007/BF02703078>
- Krishnan, K. T., Neumann, P., Ahmad, A. H., & Pimid, M. (2015). A scientific note on the association of *Haptoncus luteolus* (Coleoptera: Nitidulidae) with colonies of multiple stingless bee species. *Apidologie*, 46(2), 262–264. <https://doi.org/10.1007/s13592-014-0312-3>
- Lackner, T. (2015). Revision of the genus *Procoryphaeus* Mazur, 1984 (Coleoptera: Histeridae: Histerinae: Exosternini). *Zootaxa*, 4044(2), 289–300. <https://doi.org/10.11646/zootaxa.4044.2.6>
- Neumann, P., & Elzen, P. J. (2004). The biology of the small hive beetle (*Aethina tumida*, Coleoptera: Nitidulidae): Gaps in our knowledge of an invasive species. *Apidologie*, 35(3), 229–247. <https://doi.org/10.1051/apido:2004010>
- Neumann, P., Evans, J. D., Pettis, J. S., Pirk, C. W., Schäfer, M. O., Tanner, G., & Ellis, J. D. (2013). Standard methods for small hive beetle research. *Journal of Apicultural Research*, 52(4), 1–32. <https://doi.org/10.3896/IBRA.1.52.4.19>
- Neumann, P., Pettis, J. S., & Schäfer, M. O. (2016). Quo vadis *Aethina tumida*? Biology and control of small hive beetles. *Apidologie*, 47(3), 427–466. <https://doi.org/10.1007/s13592-016-0426-x>