

# Agroscope

Good food, healthy environment





Schweizerische Eidgenossenschaft  
Confédération suisse  
Confederazione Svizzera  
Confederaziun svizra

Federal Department of Economic Affairs  
Education and Research EAER

**Agroscope**

# Agroscope

## Good food, healthy environment

**Dr. Corinne Jud Khan, Director of Agroscope**

8th of June, 2026



# Sustainable and Healthy Food



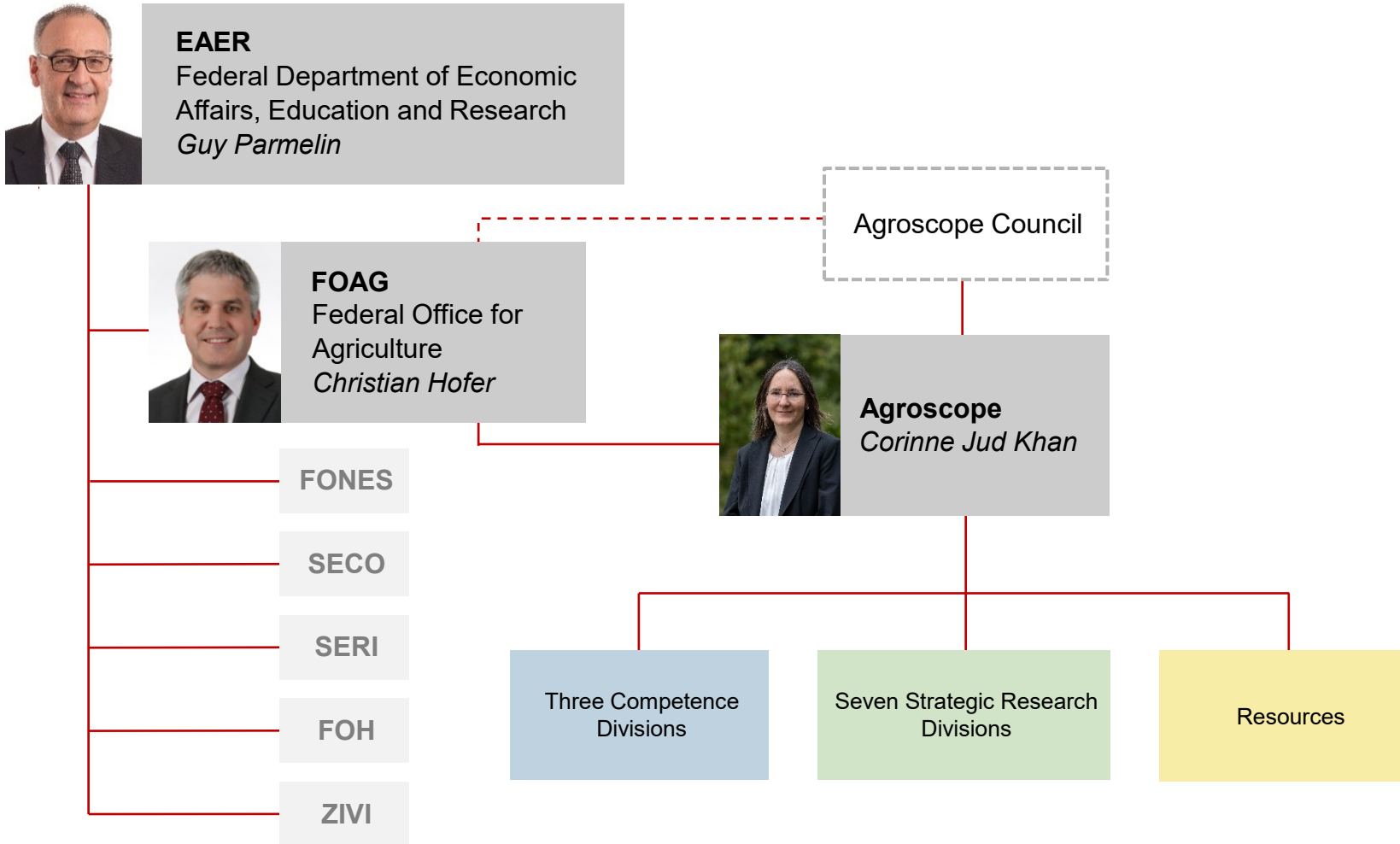
7 June  
World Food Safety Day





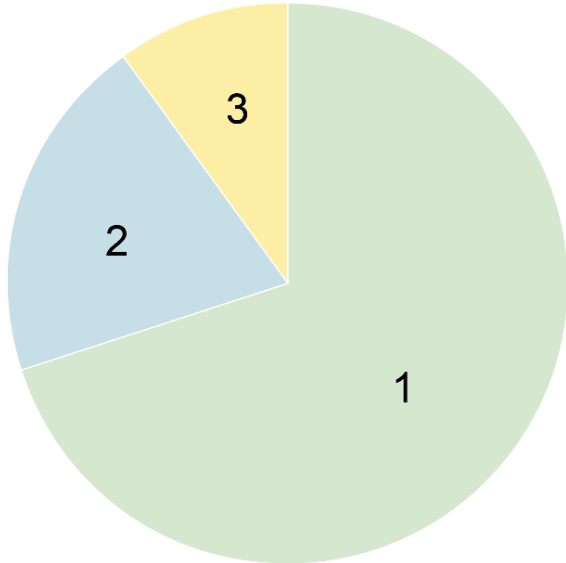
**Welcome and Introduction Agroscope | World Food Safety Day**  
Corinne Jud Khan

# Agroscope within the EAER





# For Whom do We Research?



## → For the agriculture and food sector

1 **Research and Development** along the value chain according to the slogan “From farm to fork, from fork to farm”.

## → For legislation

2 **Enforcement tasks and enforcement tools** within the scope of the legal provisions.

## → For policy

3 **Scientific support of agricultural policy:** Advising decision-makers, authorities and agricultural extension centres.



# Key Performance Indicators 2025

**951** Full-time positions (FTE) with **1115** employees  
of which **42** trainees, **81** interns, **70** doctorates, **65** postdocs

**49%** women

---

**1319** publications  
**708** practice-oriented publications  
**611** scientific publications

**1484** lectures and posters

**92** supervised dissertations (number not definitive)

**98** supervised semester, bachelor and master theses

**1750** lessons (universities, technical colleges, vocational schools and courses)



# Agroscope Working Programme 2026-29

**good food,  
healthy environment**



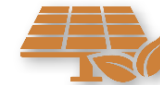
**Agriculture in a  
Changing Climate**



**Protecting Natural  
Resources**



**Cost-Efficient and  
Species-Appropriate  
Animal Husbandry**



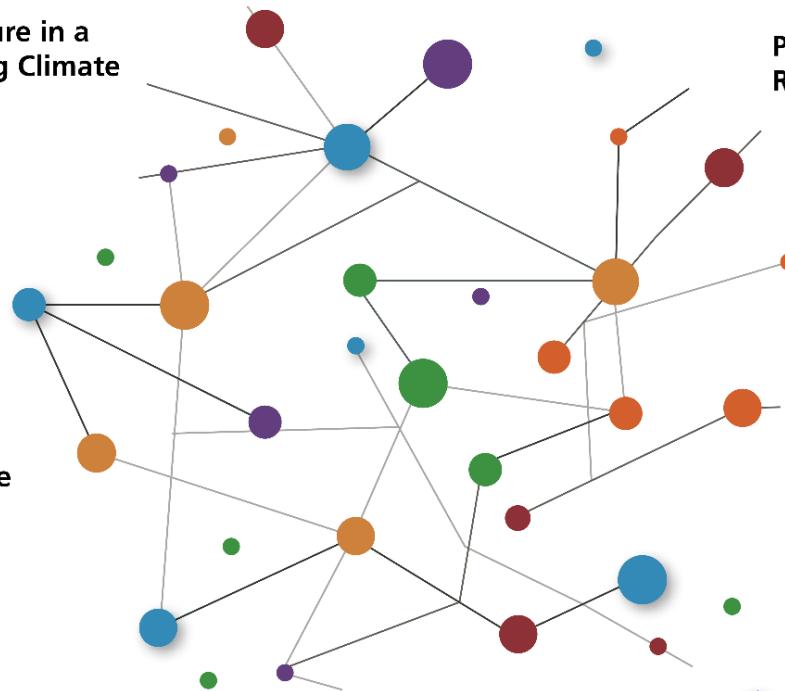
**Agroecological  
Production Systems**



**Sustainable and  
Healthy Food**



**Competitive Food  
Production**





# From Practise to Research - back to Practise

Consulting / Practise



Authorities



Design Thinking



Research Dairy



Product



Partners



Consulting / Practise





# Agroscope Community of Practice in Dairy

- Farmers & Producers
- Agencies & Associations
- Authorities
- Universities

 **Liebefeld Kulturen®**  
 + La culture suisse  
 con · avec · mit Agroscope

## 75%

### Market Reach

Swiss cheese dairies  
using Agroscope's  
microbial cultures

## 4

### Consultants



## 600+

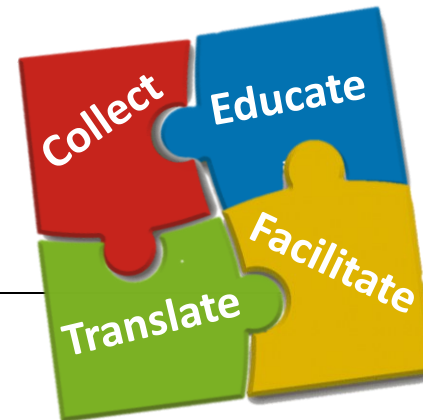
### Annual Consultations

Direct support to  
producers

## 50+

### Training Sessions

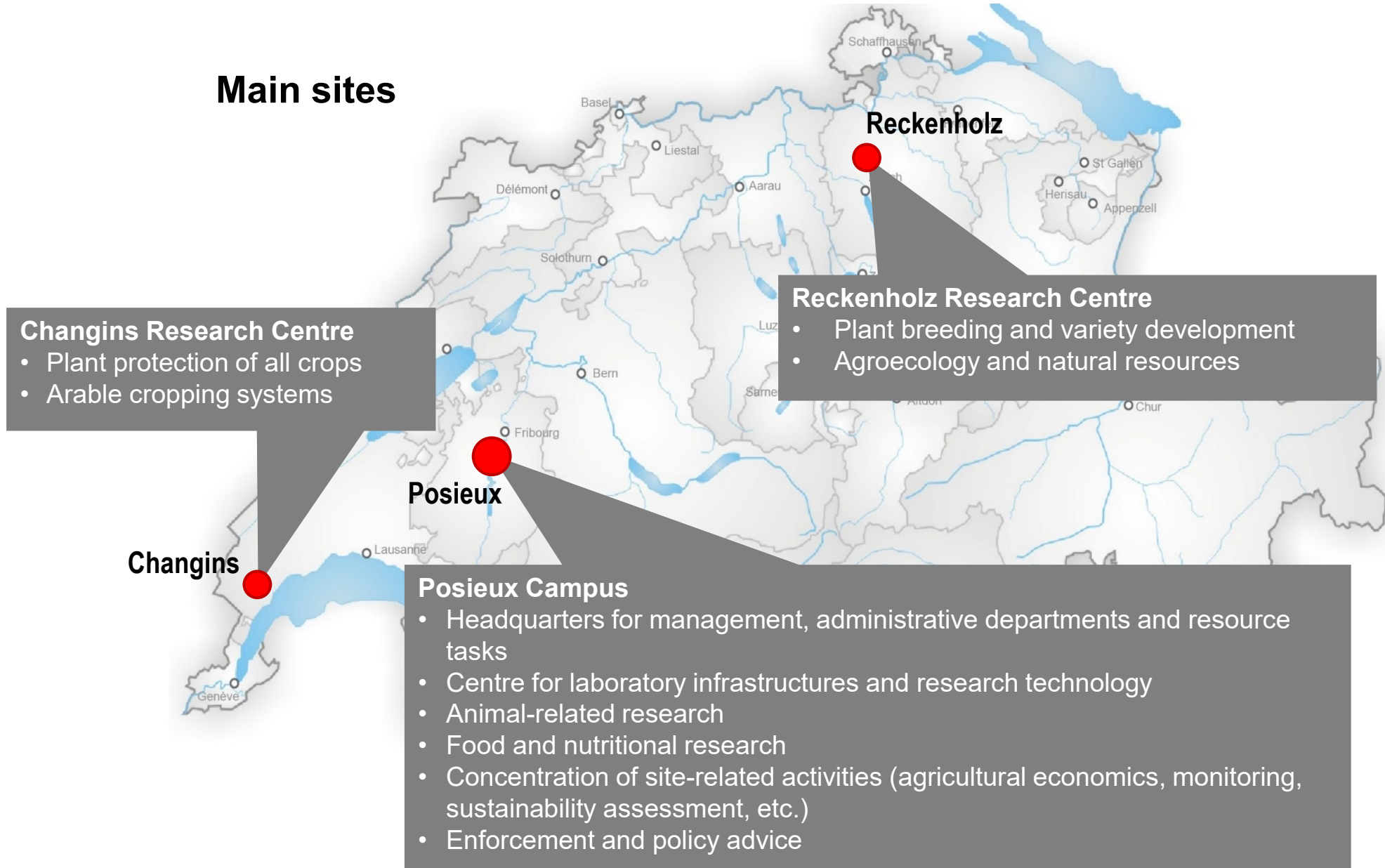
Knowledge transfer  
each year





# Agroscope's Site Strategy

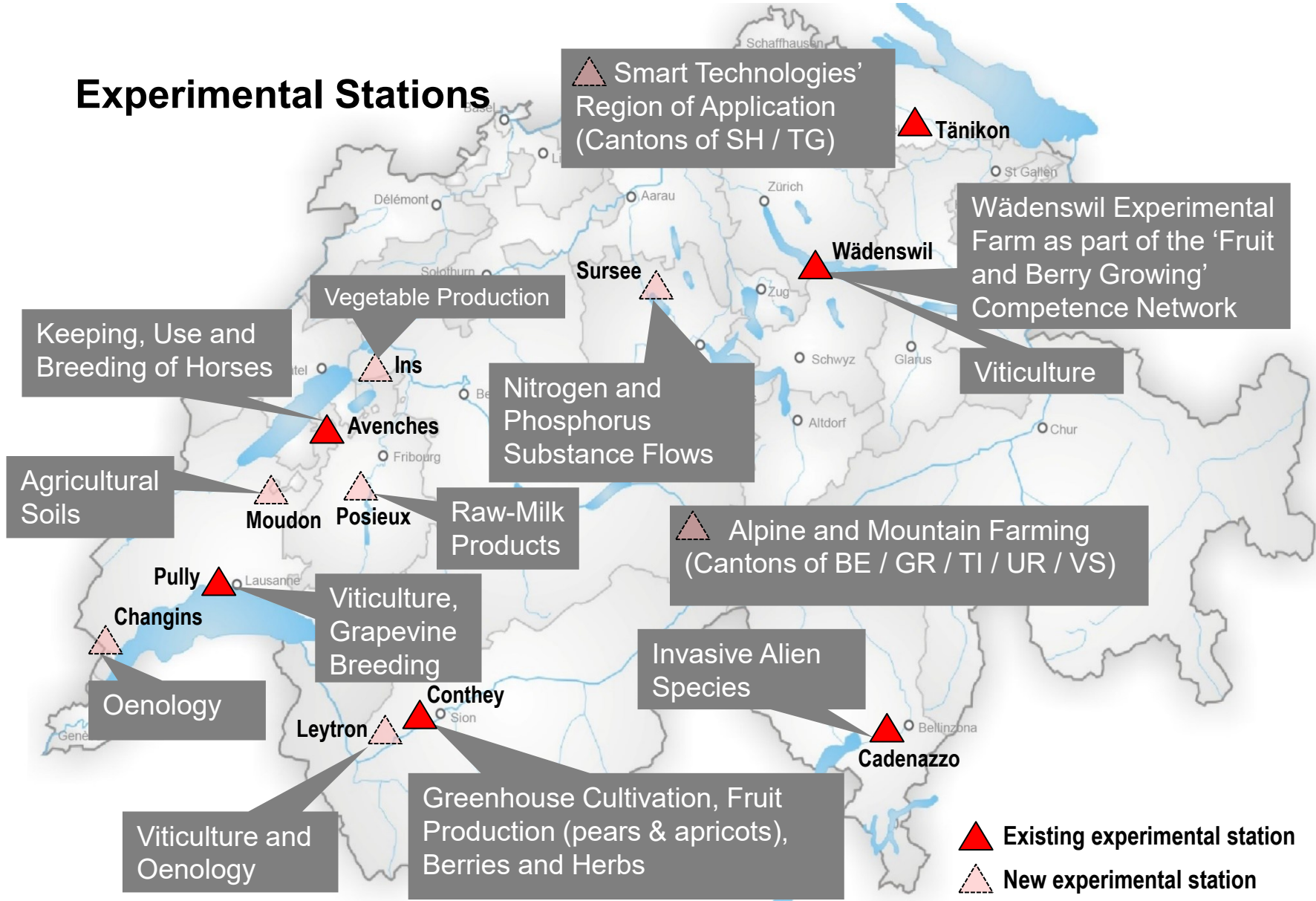
## Main sites





# Agroscope's Site Strategy

## Experimental Stations

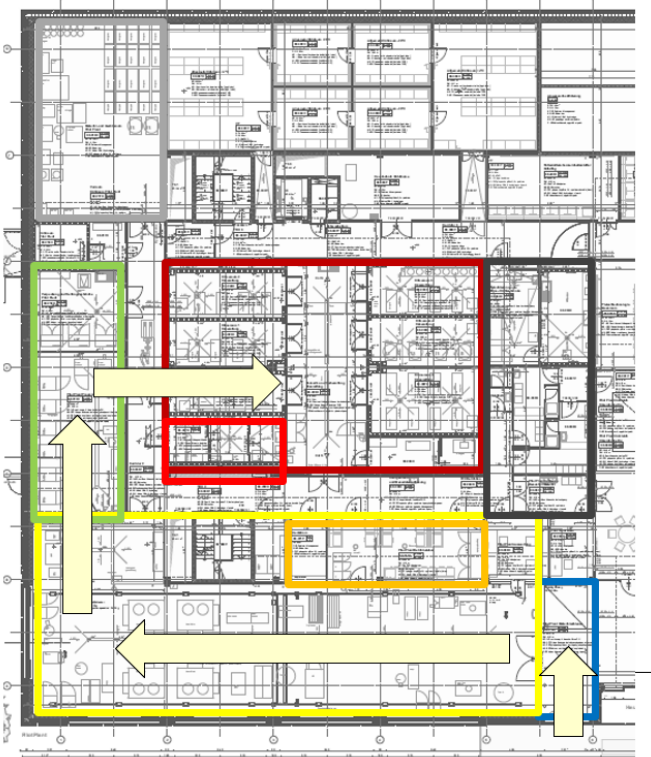


▲ Existing experimental station  
 ▲ New experimental station



# Site Strategy – new Laboratory Building Posieux

Research Dairy 2026+





# Construction site impressions



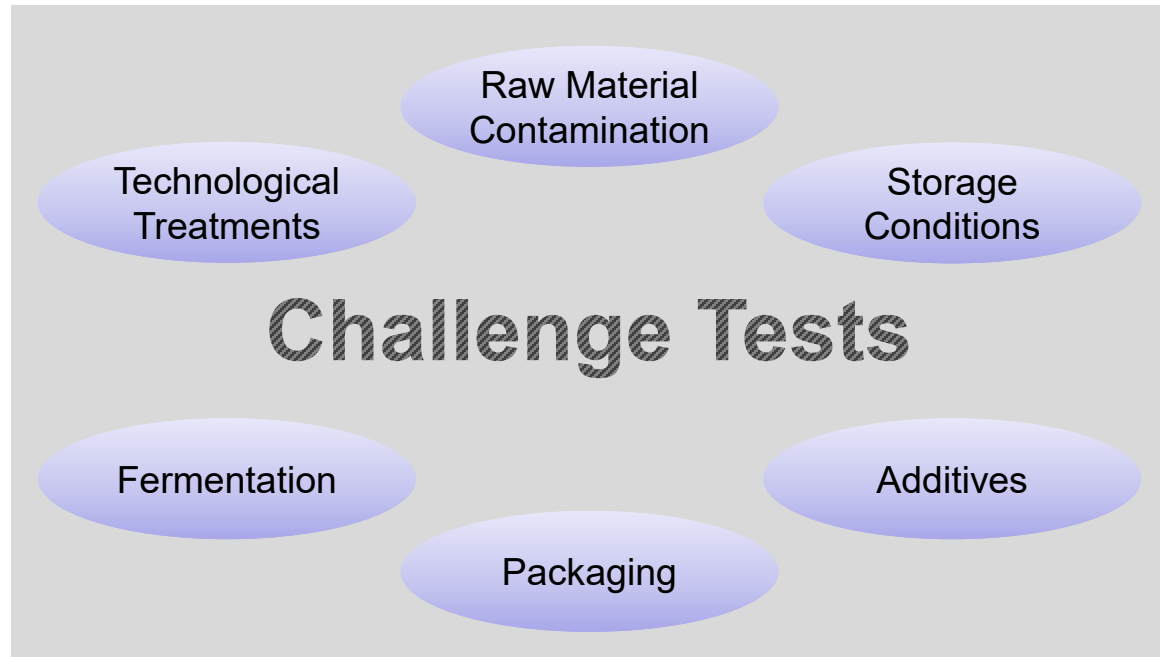


# Future Infrastructure for Future Challenges



Amendment to EU Regulation 2073/2005, effective as of June 1<sup>st</sup>, 2026:

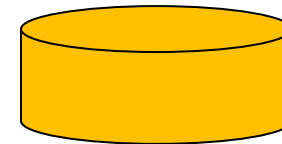
- Expansion of the food safety criterion for *Listeria monocytogenes* (LMO)
- LMO in ready-to-eat products must not exceed 100 CFU/g by the best-before date



Lab Scale



Pilot Scale



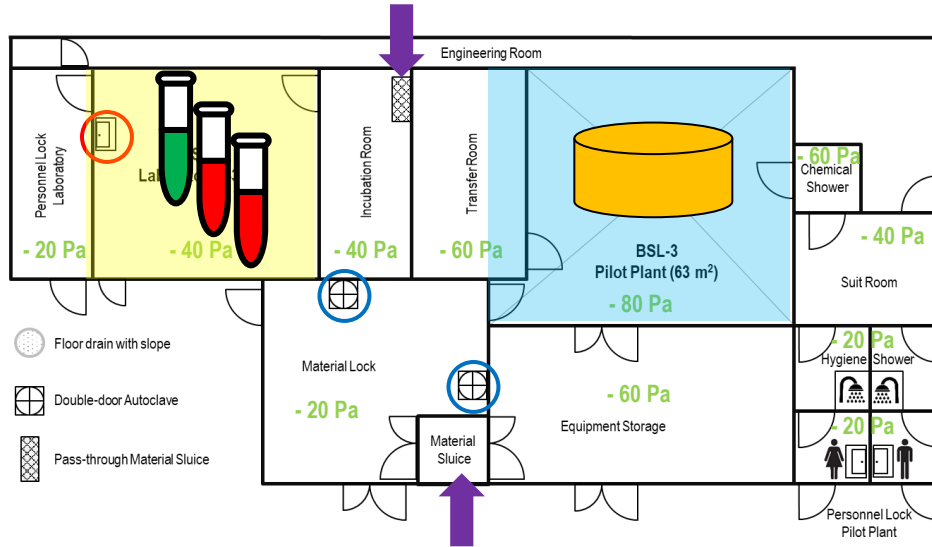
- Shelf life validation
- Formulation testing
- Regulatory Compliance
- Process Validation

Pilot Plant  
Biosafety Level 3

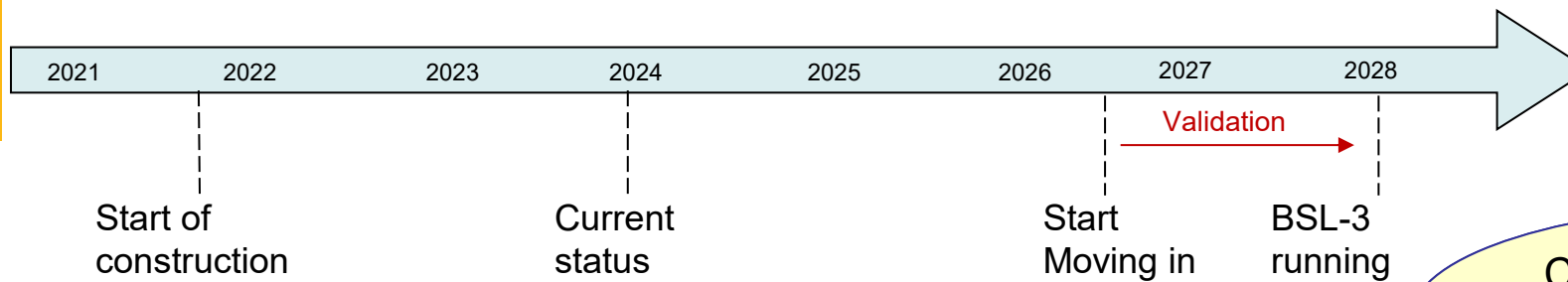




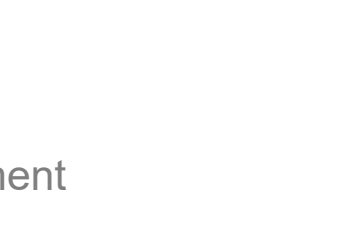
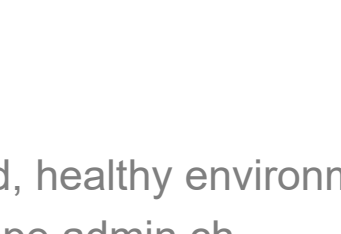
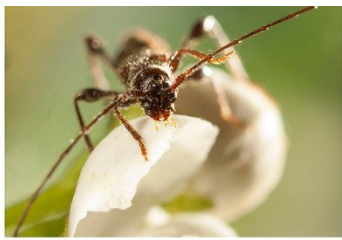
# BSL3 Infrastructure – Structural protective measures



- 3-stage changing room
- PP: chemical shower (~ 1 % PES)
- Lab: zone separation using benches
- H<sub>2</sub>O<sub>2</sub> fumigation (sealed rooms)
- H14 HEPA exhaust air filter
- H14 HEPA supply air filter for the experimental room
- Pass-through autoclaves
- Wastewater sterilization (ground floor; below)
- Material airlocks (H<sub>2</sub>O<sub>2</sub> fumigation)
- Pressure cascades



Cheese, meat products, plant-based alternatives, highly flexible



**Agroscope** good food, healthy environment  
[www.agroscope.admin.ch](http://www.agroscope.admin.ch)

