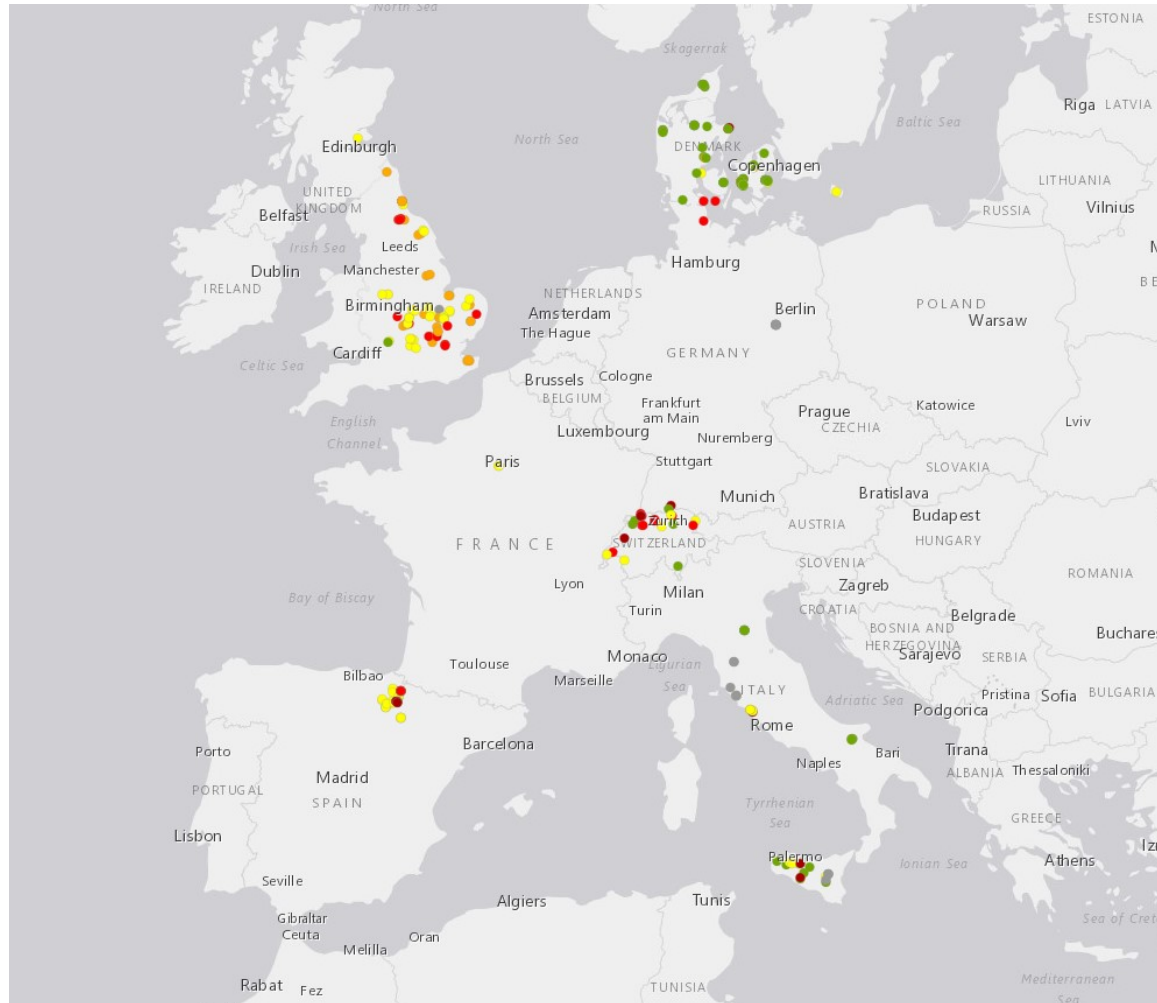


# Die RustWatch Internetplattform zum Monitoring und zur Überwachung der Weizenroste

Jessica Joaquim, Biagio Randazzo, Jens Grønbech Hansen

## “Crowdsource App” : Eine Webplattform für alle die an Weizenrosten interessiert sind !



# Wie zugreifen?

1. Über die SmartphoneApp

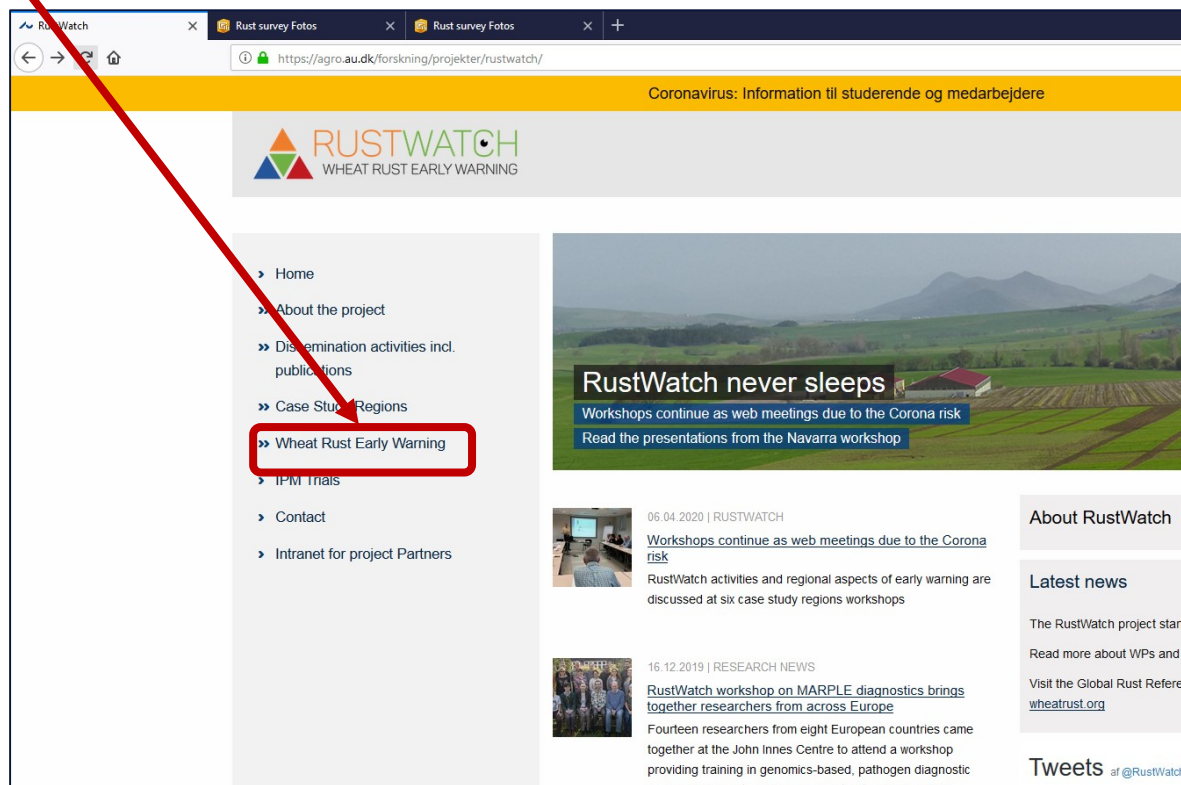
(runterladen über

<https://survey123.arcgis.com/share/3ad3d31e0ef646a9930ce80abd909c0b?portalUrl=http://gis-au.maps.arcgis.com> )

2. Über die RustWatch Website:

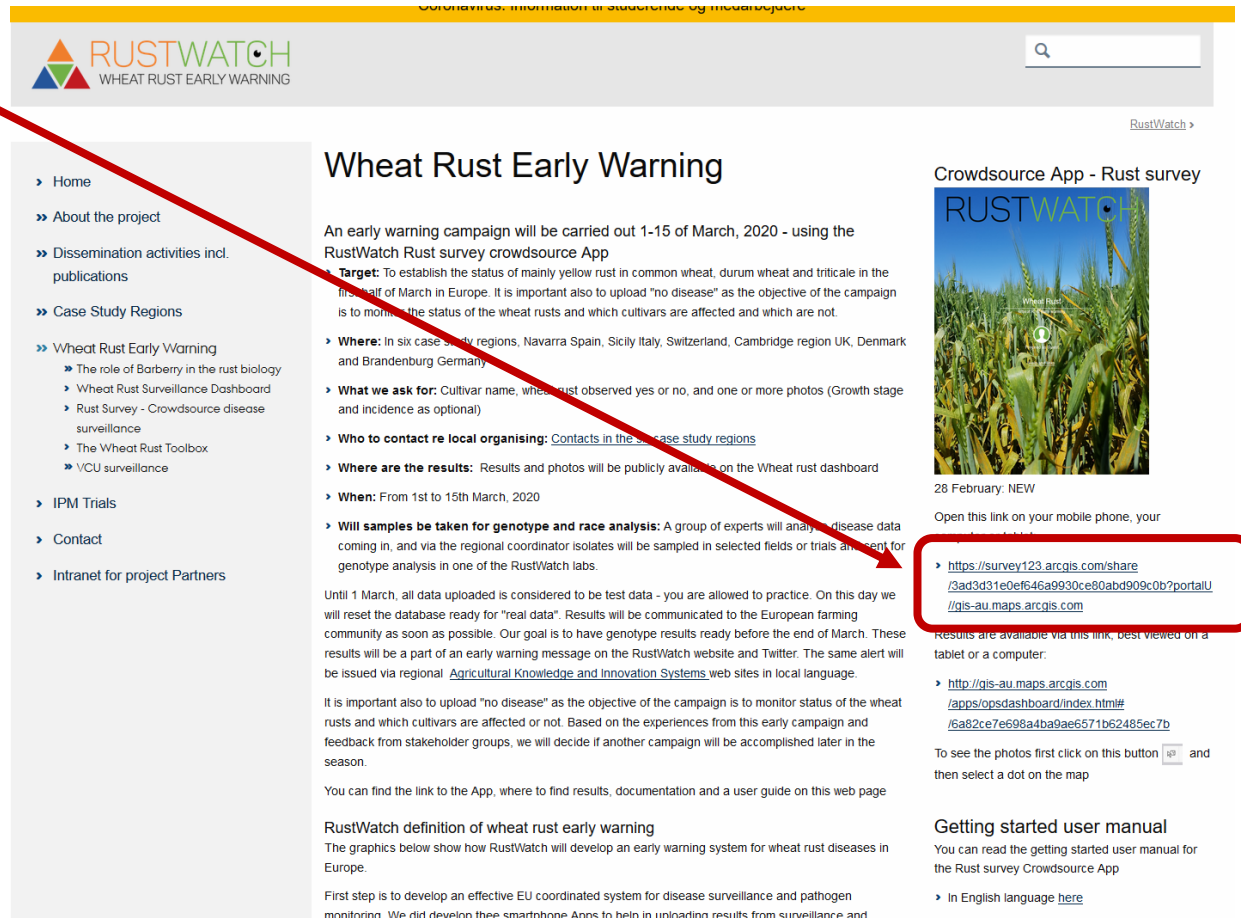
<https://agro.au.dk/forskning/projekter/rustwatch/>

➤ Wheat Rust Early Warning



# Wie zugreifen?

- Wheat Rust Early Warning
- Erster Link rechts oben



The screenshot shows the RustWatch website. A red arrow originates from the text 'Erster Link rechts oben' and points to a link in the 'Crowdsource App - Rust survey' section. The link is: <https://survey123.arcgis.com/share/3ad3d31e0ef646a9930ce80abd909c0b?portalId=6a82ce7e698a4ba9ae6571b62485ec7b>

**RUSTWATCH**  
WHEAT RUST EARLY WARNING

Wheat Rust Early Warning

An early warning campaign will be carried out 1-15 of March, 2020 - using the RustWatch Rust survey crowdsourcing App

**Target:** To establish the status of mainly yellow rust in common wheat, durum wheat and triticale in the first half of March in Europe. It is important also to upload "no disease" as the objective of the campaign is to monitor the status of the wheat rusts and which cultivars are affected and which are not.

- **Where:** In six case study regions, Navarra Spain, Sicily Italy, Switzerland, Cambridge region UK, Denmark and Brandenburg Germany
- **What we ask for:** Cultivar name, wheat rust observed yes or no, and one or more photos (Growth stage and incidence as optional)
- **Who to contact re local organising:** [Contacts in the case study regions](#)
- **Where are the results:** Results and photos will be publicly available on the Wheat rust dashboard
- **When:** From 1st to 15th March, 2020
- **Will samples be taken for genotype and race analysis:** A group of experts will analyse disease data coming in, and via the regional coordinator isolates will be sampled in selected fields or trials and sent for genotype analysis in one of the RustWatch labs.

Until 1 March, all data uploaded is considered to be test data - you are allowed to practice. On this day we will reset the database ready for "real data". Results will be communicated to the European farming community as soon as possible. Our goal is to have genotype results ready before the end of March. These results will be a part of an early warning message on the RustWatch website and Twitter. The same alert will be issued via regional [Agricultural Knowledge and Innovation Systems](#) web sites in local language.

It is important also to upload "no disease" as the objective of the campaign is to monitor status of the wheat rusts and which cultivars are affected or not. Based on the experiences from this early campaign and feedback from stakeholder groups, we will decide if another campaign will be accomplished later in the season.

You can find the link to the App, where to find results, documentation and a user guide on this web page

**RustWatch definition of wheat rust early warning**

The graphics below show how RustWatch will develop an early warning system for wheat rust diseases in Europe.

First step is to develop an effective EU coordinated system for disease surveillance and pathogen monitoring. We did develop three smartphone Apps to help in uploading results from surveillance and

**Crowdsource App - Rust survey**

**RUSTWATCH**


28 February: NEW

Open this link on your mobile phone, your

- <https://survey123.arcgis.com/share/3ad3d31e0ef646a9930ce80abd909c0b?portalId=6a82ce7e698a4ba9ae6571b62485ec7b>

Results are available via this link, best viewed on a tablet or a computer:

- <http://gis-au.maps.arcgis.com/apps/opsdashboard/index.html#/6a82ce7e698a4ba9ae6571b62485ec7b>

To see the photos first click on this button  and then select a dot on the map

**Getting started user manual**

You can read the getting started user manual for the Rust survey Crowdsourcing App

- In English language [here](#)

# Die Eingabemaske

## Getreideart

Common wheat	= Mhlweizen
Durum wheat	= Hartweizen
Triticale	= Triticale

## Sortenname

## Rostart

Yellow rust = Gelbrost  
 Leaf rust = Braunrost  
 Stem rust = Schwarzrost

Rust survey

– Info and help

Date

26.05.2020

Crop Type\*

Common wheat

Growth stage

No observation

Cultivar name\*

– Yellow rust

– Leaf rust

– Stem rust

Comments

## Entwicklungsstadium

Tillering	= Bestockung
Boot	= Schossen
Heading	= Ährenschieben
Flowering	= Blüte
Milk	= Milchreife
Dough	= Teigreife
Maturity	= Vollreife
No observation	

# Die Eingabemaske

Befallsstärke (%)



Table 1. Scale for assessment of disease severity in cereals and corresponding UPOV scale used in plant breeding and VCU testing. Wording updated 30 March 2020

Disease severity (%)	UPOV scale*	Color code	Symptoms on cereal, crop/plot level (indicative)			
			Leaf Rust	Yellow Rust	Powdery Mildew	Septoria/Tan spot
0	1		No disease	No disease	No disease	No disease
0,1	2		Few postules per plant	Few stripes per plant (foci)	Few colonies per plant	Max one spot per plant
0,5	3		Few postules per plant	Few stripes per tiller	Few colonies per tiller	Max one spot per tiller
1	4		Several postules per tiller (lower leaves)	Several lesions/stripes per tiller (lower leaves)	Several colonies per tiller (lower leaves)	Few spots per plant (lower leaves)
5	5		Lower leaves up to 10-25% coverage	Leaves with overlapping lesions	Lower leaves up to 10-25% coverage	Lower leaves up to 10-25% coverage
10	6		Lower leaves typically 25% coverage or more			
25	7		Lower leaves 50% coverage or more			
50	8		Half of leaf area senescent. lower leaves 75-100% coverage			
≥75	9		Almost no green leaf area left			

\* Range of severities (in %) within the UPOV scale. 1: x=0; 2: 0<x<0.3; 3: 0.3≤x<0.75; 4: 0.75≤x<3; 5: 3≤x<7.5; 6: 7.5≤x<17.5; 7: 17.5≤x<37.5; 8: 37.5≤x<75; 9: x≥75  
UPOV scale: <https://www.upov.int/edocs/tgdocs/en/tg003.pdf>

# Die Eingabemaske

## Foto einfügen

entweder im Fotoalbum ein Foto suchen und einfügen.

oder direkt ein Photo mit dem Smartphone schiessen und gleich einfügen.

The screenshot shows a web form for 'Yellow rust'. It includes a dropdown for 'Severity YR [%]' with 'No observation' selected. Below is an 'Images' section containing a 'Picture' box. The 'Picture' box has a dashed border with the text 'Appuyez ici pour choisir un fichier image. (< 10MB)' and a camera icon. To the right of the 'Picture' box is a trash can icon. Below the 'Picture' box is a button with a plus sign. Red arrows point from the text on the left to the dashed box, the camera icon, the plus button, and the trash can icon. A red arrow points from the text on the right to the trash can icon.

Das Foto löschen

Ein weiteres Foto einfügen

# Die Eingabemaske

Einen Kommentar zufügen

Den Standort angeben

oder

Den Standort direkt vom das GPS  
übernehmen

Comments

255

Location

Rechercher une adresse ou un

nearmap Powered by Esri

Aucune géométrie n'a encore été capturée.

Envoyer

abschicken



# Ergebnisausgabe

- Wheat Rust Early Warning
- Zweiter Link rechts

Coronavirus: Information in deutscher Sprache

**RUSTWATCH**  
WHEAT RUST EARLY WARNING

Suche

[RustWatch](#)

## Wheat Rust Early Warning

An early warning campaign will be carried out 1-15 of March, 2020 - using the RustWatch Rust survey crowdsourcing App

- **Target:** To establish the status of mainly yellow rust in common wheat, durum wheat and triticale in the first half of March in Europe. It is important also to upload "no disease" as the objective of the campaign is to monitor the status of the wheat rusts and which cultivars are affected and which are not.
- **Where:** In six case study regions, Navarra Spain, Sicily Italy, Switzerland, Cambridge region UK, Denmark and Brandenburg Germany
- **What we look for:** Cultivar name, wheat rust observed yes or no, and one or more photos (Growth stage and incidence as optional)
- **Who to contact re local organising:** [Contacts in the six case study regions](#)
- **Where are the results:** Results and photos will be publicly available on the Wheat rust dashboard
- **When:** From 1st to 15th March, 2020
- **Will samples be taken for genotype and race analysis:** A group of experts will analyse disease data coming in, and via the regional coordinator isolates will be sampled in selected fields or trials and sent for genotype analysis in one of the RustWatch labs.

Until 1 March, all data uploaded is considered to be test data - you are allowed to practice. On this day we will reset the database ready for "real data". Results will be communicated to the European farming community as soon as possible. Our goal is to have genotype results ready before the end of March. These results will be a part of an early warning message on the RustWatch website and Twitter. The same alert will be issued via regional [Agricultural Knowledge and Innovation Systems](#) web sites in local language.

It is important also to upload "no disease" as the objective of the campaign is to monitor status of the wheat rusts and which cultivars are affected or not. Based on the experiences from this early campaign and feedback from stakeholder groups, we will decide if another campaign will be accomplished later in the season.

You can find the link to the App, where to find results, documentation and a user guide on this web page

**RustWatch definition of wheat rust early warning**

The graphics below show how RustWatch will develop an early warning system for wheat rust diseases in Europe.

First step is to develop an effective EU coordinated system for disease surveillance and pathogen monitoring. We did develop three smartphone Apps to help in uploading results from surveillance and


### Crowdsourcing App - Rust survey

28 February, NEW

Open this link on your mobile phone, your computer or tablet:

- <https://survey123.arcgis.com/share/3ad3d31e0ef646a9930ce80abd909c0b7portal/!qis-au.maps.arcgis.com>
- <http://qis-au.maps.arcgis.com/apps/opsdashboard/index.html#/6a82ce7e698a4ba9ae6571b62485ec7b>

Results are available via this link, best viewed on a tablet or computer

To see the photos first click on this button  and then select a dot on the map

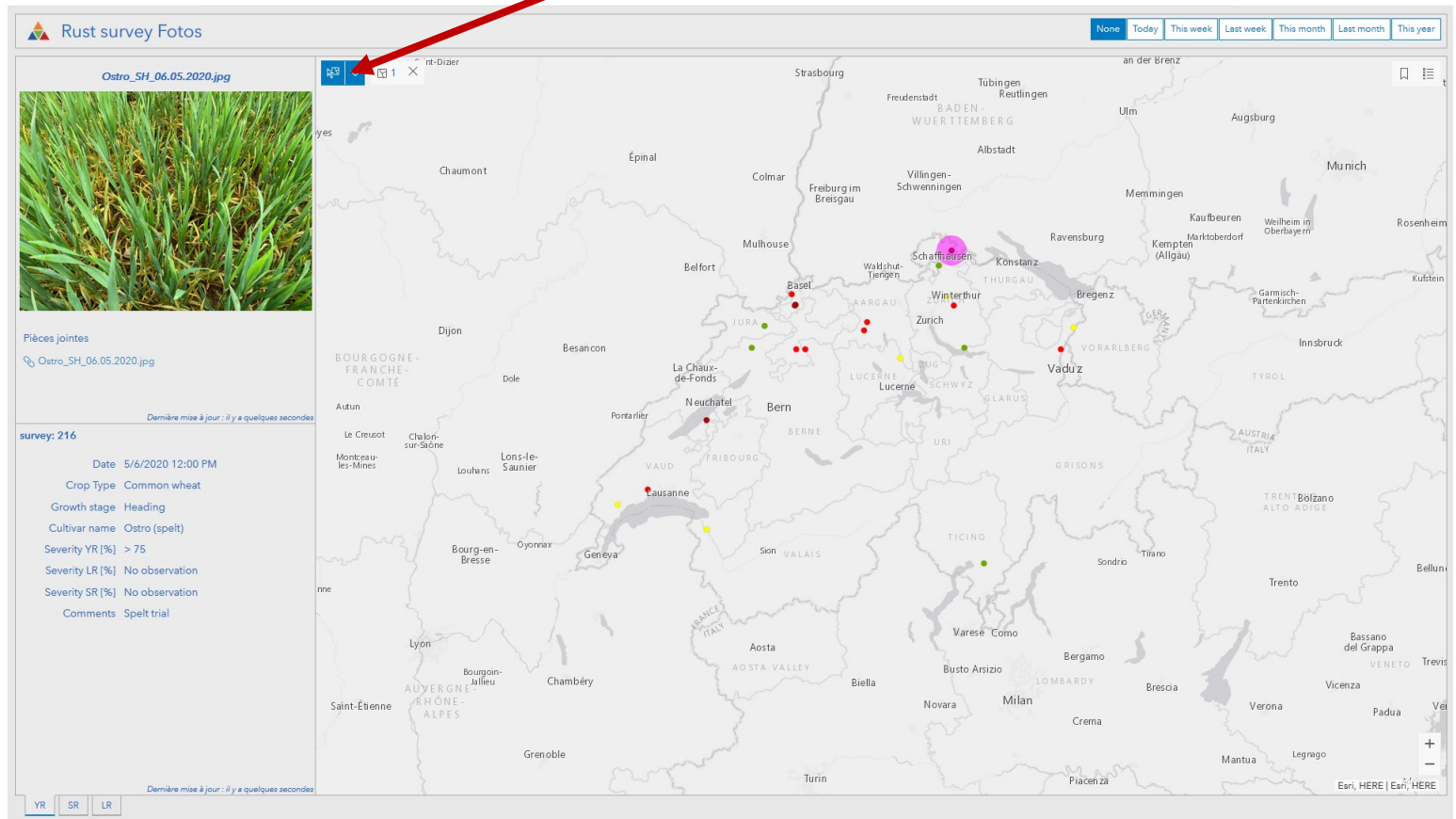
### Getting started user manual

You can read the getting started user manual for the Rust survey Crowdsourcing App

- In English language [here](#)

# Ergebnisausgabe

Um die Ergebnisse eines Standorts zu sehen,  
bitte zuerst auf diese Ikone klicken.



A map of Europe with numerous small colored dots (red, yellow, green) scattered across various countries, likely representing the distribution of wheat rust. The dots are concentrated in Central and Eastern Europe, with some in Western Europe and the Balkans.

# Herzlichen Dank für Ihre Mitarbeit